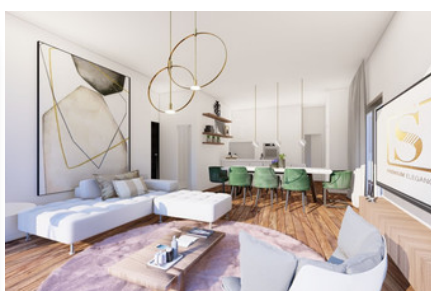
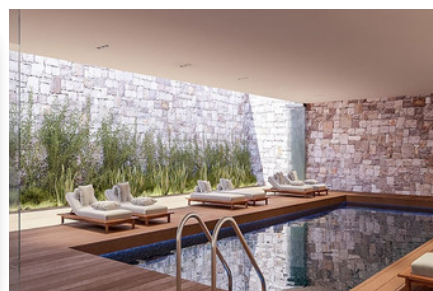
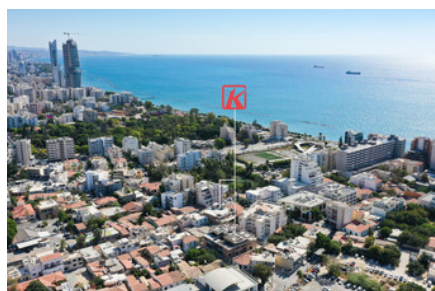


OASIS

301

+ VAT



Bedrooms: 2



Bathrooms: 2



Internal covered: 91m<sup>2</sup>



Status: Under construction



Pool: Communal



Parking: Covered

P R O P E R T Y F O R S A L E

# OASIS

## OVERVIEW



Limassol, Historical Center



Penthouse



301

## DESCRIPTION

Your shelter at the end of a long day, OASIS pays justice to its surroundings; echoing the traditional style of its location and the modernity of a city that keeps changing.

### THE PROJECT

OASIS, a shelter in the middle of Limassol's historic centre, is a truly unique residential project in the area. This magnificent gated complex, graced by large windows, open space living and luxury common amenities, is a haven for enjoying Limassol's special vibe, a city constantly on the outlook for better living.

## FACILITIES

Aircondition, Central system

Heating, Underfloor

Parking, Covered

Pool, Communal

Indoor pool, Communal, heated

Elevator

Gym

Sauna

Storage

Gated complex

## FEATURES

Bathroom underfloor heating

Courtyard

City view

Parquet flooring

Double glazing

Guest WC

Quiet area

Marble flooring

Luxury specifications

Modern design

Walking distance to beach

Near bus route

Near amenities

## DISTANCES

**Amenities:** 100 m

**Airport:** 60 km

**Sea:** 300 m

**Public transport:** 300 m

**Schools:** 100 m

**Resort:** 500 m