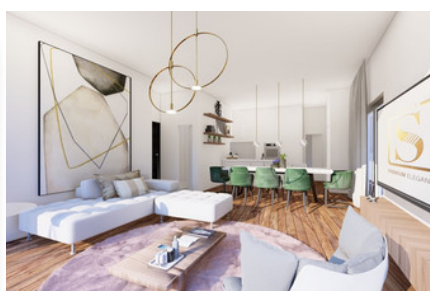
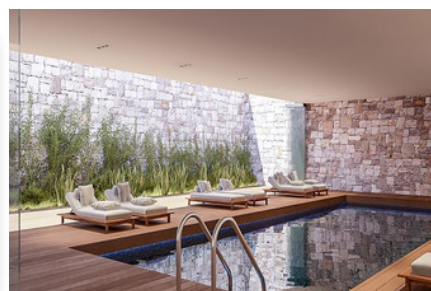
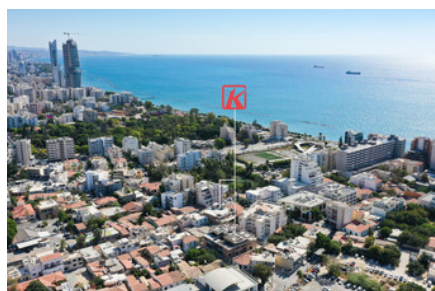


OASIS

205

+ VAT



Bedrooms: 3



Bathrooms: 2



Internal covered: 97.09m²



Status: Under construction



Pool: Communal




Parking: Covered

P R O P E R T Y F O R S A L E

OASIS

OVERVIEW

 Limassol, Historical Center

 Apartment

 205

DESCRIPTION

Your shelter at the end of a long day, OASIS pays justice to its surroundings; echoing the traditional style of its location and the modernity of a city that keeps changing.

THE PROJECT

OASIS, a shelter in the middle of Limassol's historic centre, is a truly unique residential project in the area. This magnificent gated complex, graced by large windows, open space living and luxury common amenities, is a haven for enjoying Limassol's special vibe, a city constantly on the outlook for better living.

FACILITIES

Aircondition, Central system

Heating, Underfloor

Parking, Covered

Pool, Communal

Indoor pool, Communal, heated

Elevator

Gym

Sauna

Storage

Gated complex

FEATURES

Bathroom underfloor heating

Courtyard

City view

Parquet flooring

Double glazing

Guest WC

Quiet area

Marble flooring

Luxury specifications

Modern design

Walking distance to beach

Near bus route

Near amenities

DISTANCES

Amenities: 100 m

Airport: 60 km

Sea: 300 m

Public transport: 300 m

Schools: 100 m

Resort: 500 m