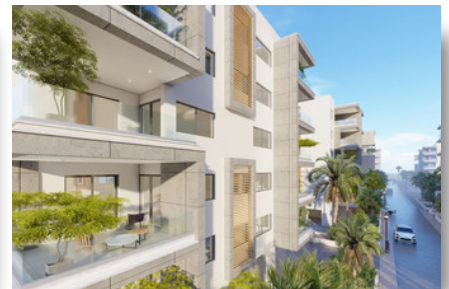


HARBOUR CITY

402


€334,425 + VAT




 Bedrooms: 2

 Bathrooms: 2

 Internal covered: 81.9m²

 Status: Key ready

 Pool: Communal

 Parking: Covered

P R O P E R T Y F O R S A L E

HARBOUR CITY

OVERVIEW

 Limassol, Zakaki  Apartment  402

DESCRIPTION

Living at one of Limassol's most upcoming locations is more than great...it is all about absorbing the vibe of one of the most cosmopolitan Mediterranean destinations right next to the city's world-famous harbour. Harbour City, an impressive residential project, is defined by its location, the sense of a true and authentic community and the endless potential of constant growth all around it.

THE PROJECT

Harbour City, as its name suggests, is a landmark residential development to define the western part of Limassol. A total of 13 residential blocks, each boasting 5 floors, provide comfortable and effortless living.

FACILITIES

Aircondition, Provision	Heating, Provision	Parking, Covered
Pool, Communal	Elevator	Childrens playground
Gated complex	Clubhouse	

FEATURES

Combined kitchen and dining area	Elevated	Balcony
Entrance gate	Investment opportunity	Ceramic tiles
Laminate flooring	Double glazing	Guest WC
Veranda	Quiet area	En suite bathroom
Modern design	Near bus route	Near amenities

DISTANCES

Amenities: 500 m	Airport: 60 km	Sea: 1 km
Public transport: 500 m	Schools: 100 m	Resort: 1 km