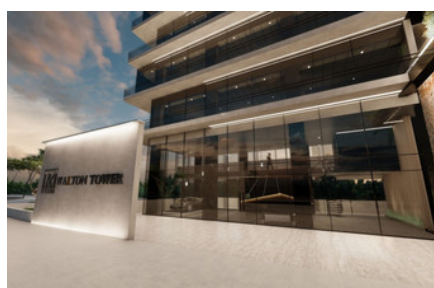
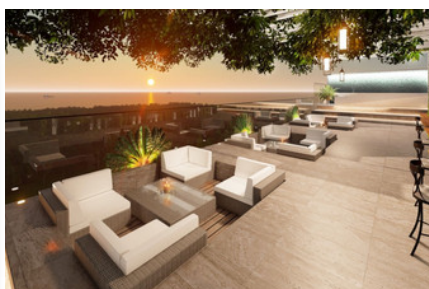


WALTON TOWER

501

€3,186,135 +  
VAT



Internal covered: 176.27m<sup>2</sup>



Plot: 236.01m<sup>2</sup>



Status: Off plan



Parking: Uncovered



Covered veranda: 34.96m<sup>2</sup>



Total covered: 218.01m<sup>2</sup>

P R O P E R T Y F O R S A L E

# WALTON TOWER

## OVERVIEW

 Limassol, Zakaki  Office  501

## DESCRIPTION

Walton Tower is a striking business centre in the western part of Limassol. Our approach to commercial office design is largely determined by location and this area is becoming one of the most attractive and developed parts. The project would be a suitable choice for a growing business. This building is designed for professionals who appreciate an inspiring work environment with panoramic sea and city views.

### THE PROJECT

Aesthetically pleasing and flexible workspaces in the heart of the western part of Limassol. Among Walton Tower's 7 floors are open-space offices with breathtaking views. Its impressive roof terrace is ideal for office entertaining and multi-purpose events.

## FACILITIES

Aircondition, Provision

Heating, Provision

Parking, Uncovered

Elevator

Storage

## FEATURES

Roof garden

## DISTANCES

**Amenities:** 300 m

**Airport:** 60 km

**Sea:** 100 m

**Public transport:** 100 m

**Schools:** 1 km

**Resort:** 1 km