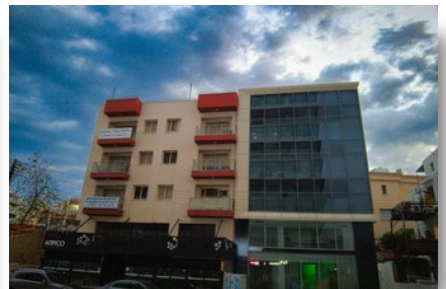


THE CENTRAL

#1010

€2,500,000



Internal covered: 345m²



Parking: Underground



Covered veranda: 66m²



Roof garden: 52m²

P R O P E R T Y F O R S A L E

THE CENTRAL

OVERVIEW

 Limassol, City Center  Commercial Building  1010

DESCRIPTION

The Central is a brand new commercial building, blending perfectly office and shop spaces in the very heart of Limassol.

THE PROJECT

The structure of The Central has an impressive modern and elegant style offering a convenient planning solution with high-quality finish. The building is equipped with an underground parking which can be accessed through an electrical platform ensuring thus the privacy of your parking space. The building consists of 4 floors and a basement. The ground floor includes a lobby and a two-level retail space that are ideal for a showroom, on the second, third and fourth floor there you can find the elegant office spaces with a roof garden that enjoys ample of city views.

THE LOCATION

As its name suggests, the building is located in the heart of the fastest developing commercial center of Cyprus; Limassol area of Pentadromos. The proximity to the nearby amenities is a breath away offering everything you may need for a business or comfortable living. The old city center is a step away to be explored and enjoyed.

FACILITIES

Aircondition, Split system
Elevator

Heating, Provision

Parking, Underground

FEATURES

DISTANCES

Amenities: 100 m

Airport: 60 km

Sea: 1 km

Public Transport: 100 m

Schools: 500 m

Resort: 1 km