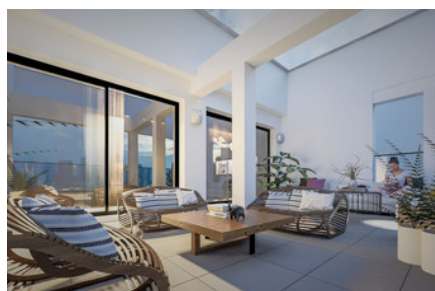


ORANGE HOMES

302

+ VAT



Bedrooms: 2



Bathrooms: 2



Internal covered: 75m²



Status: Under construction



Parking: Underground

P R O P E R T Y F O R S A L E

ORANGE HOMES

OVERVIEW

 Limassol, Agios Athanasios

 Apartment  302

DESCRIPTION

Modern living spaces, calming views and ample outdoors to enjoy life in the most cosmopolitan city in Cyprus

THE PROJECT

ORANGE HOMES consists of 6 sea-view apartments, of which the apartment on the first floor has a large open-air garden, and the apartment also has a one-bedroom and one-office apartment. ORANGE HOMES is located in the upscale area of Panthea, one of Limassol's luxury estates, with a brief master plan and a sublime architectural design. Let you enjoy the hustle and bustle in the quiet, without the slightest noise in the hustle and bustle, providing you with a relaxed and comfortable living environment.

FACILITIES

Parking, Underground

Storage

Solar photovoltaic panels

FEATURES

Mountain view

Sea view

DISTANCES

Sea: 3.5 km