



PREMIUM ELEGANCE

N8 GARDEN

N8 GARDEN

N8 garden is a development paralleled to none; This project brings to life the dream of a house in one of the best locations in Limassol; the sea view, the spacious plots the, joy of living in your own house- this is as Mediterranean as it can get.

CONTENT

N8 GARDEN	3
THE PROJECT	4-7
THE DETAILS	8-9
TURNKEY FINISHES	10-17
ELITE LIVING	18-21
THE LOCATION	22-23
MAP	26-27
PLANS	28-35
KALEIDE	36-37
CONTACT	38





THE PROJECT

N8 Garden is a beautiful 5-bedroom villa that is distinguished by functionality, convenience of planning solutions, modern design and high-quality interiors. Residents will enjoy stunning views of the sea and the city from all floors, while the spacious plot offer plenty of space for gardening, outdoor activities and all the benefits of living in your own house.

THE DETAILS

Elegant design

Spacious plot

Stunning sea view

Modern architecture and high-quality exterior

Spacious interior



TURNKEY FINISHES

Semi-solid parquet floors in each room | Marble floors and walls in toilets & bathrooms | High ceilings (2.90-3.20m) | Security entrance doors | Provision for under-floor heating | Provision for VRV A/C | High quality sanitary wear from European brands | Double glazed thermal aluminium window frames | High-quality kitchen cabinets from Italy | High quality wardrobes from European brands









An urban retreat, the property's common features such as the indoor pool and common courtyard draws the resident into an exciting layout made for relaxing and entertaining

ELITE LIVING

N8 is unique for its mere design; rarely does one find such stunning house projects, built on spacious plot and benefiting from top-end facilities. Comprising N8 Garden is built with the highest specifications, merging the exterior and interior spaces through a coherent living experience.





Inspired by the city's traditional charm and vibrant pace, No garden is a masterpiece of design, craftsmanship and exciting living at one of the most enviable locations in Limassol

THE LOCATION

Agios Athanasios, located just 3 kilometres from the historic and business centre of the city, is one of the most premium and exciting residential areas in Limassol, a place where housing is in high demand among property buyers, both locals and foreigners. A fairly new area, with luxury villas sitting side by side with low-rise apartment buildings, Agios Athanasios offers authentic Mediterranean living through its laid-back vibe and stunning views of Limassol's skyline. An independent municipality, it functions as a suburb of Limassol, only a 7-minute drive to the busy city centre but complete with amenities within an arm's reach including some of the best private and public schools in the city.

LOCATION BENEFITS

- Tranquil and quiet area
- Developed infrastructure
- Modern and comfortable accommodation
- Lack of dense development
- Proximity to the city center and the sea

A great place for permanent residence, recreation and real estate investment





AGIA FYLA

AGIOS ATHANASIOS

EKALI

German Polyclinic Center

Foleys

GERMASOGEIA

N8 GARDEN

MESA GEITONIA

Grammar

Ygia Polyclinic

HISTORIC CENTER

LITC

Pascal

NEAPOLIS

COLUMBIA

GREEN AREA

MOUTTAGIAKA

Atlantica Miramare

The Royal Apollonia

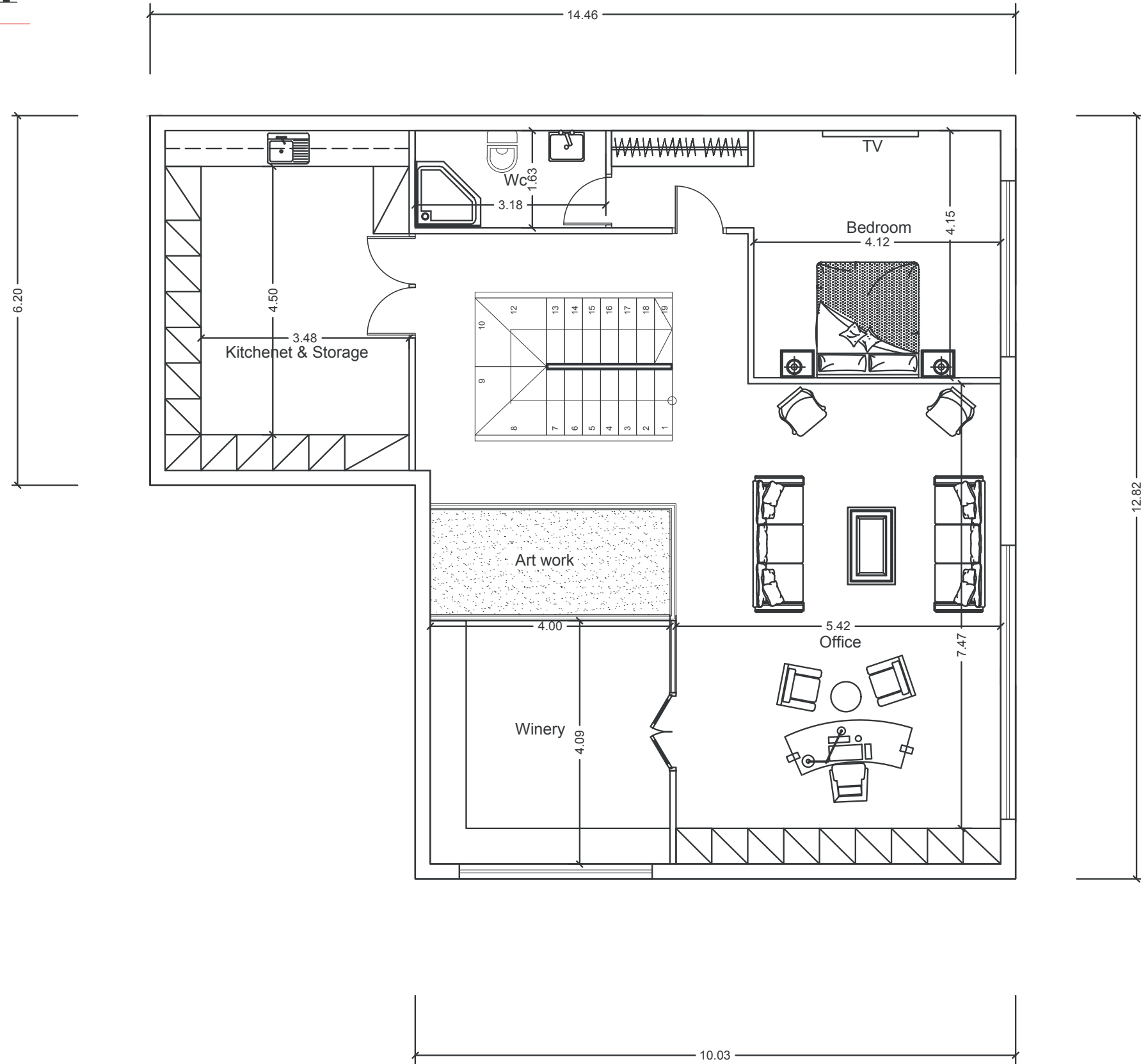
Londa

Poseidonia

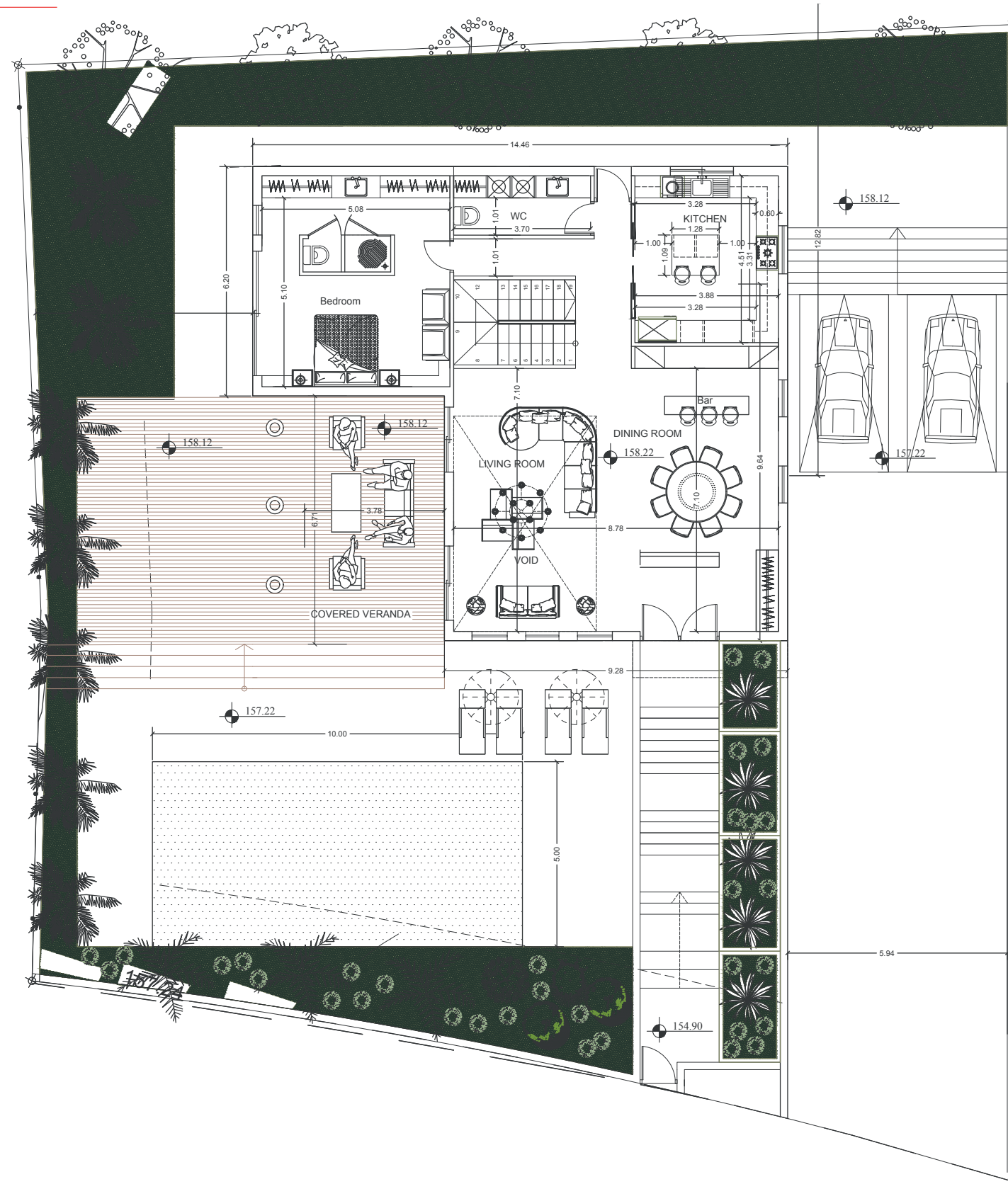
UNITS

No	Floors	Type	Bedrooms	Bathrooms	Covered Internal (sq.m.)	Covered Veranda (sq.m.)	Parking Covered (sq.m.)	Uncovered Veranda (sq.m.)	Total Covered (sq.m.)	Total Area (sq.m.)	Plot (sq.m.)	Swimming Pool
No 1	2 + Basement	Villa	5	4	396	34.40	81.00	238	511.40	749.40	733.00	yes

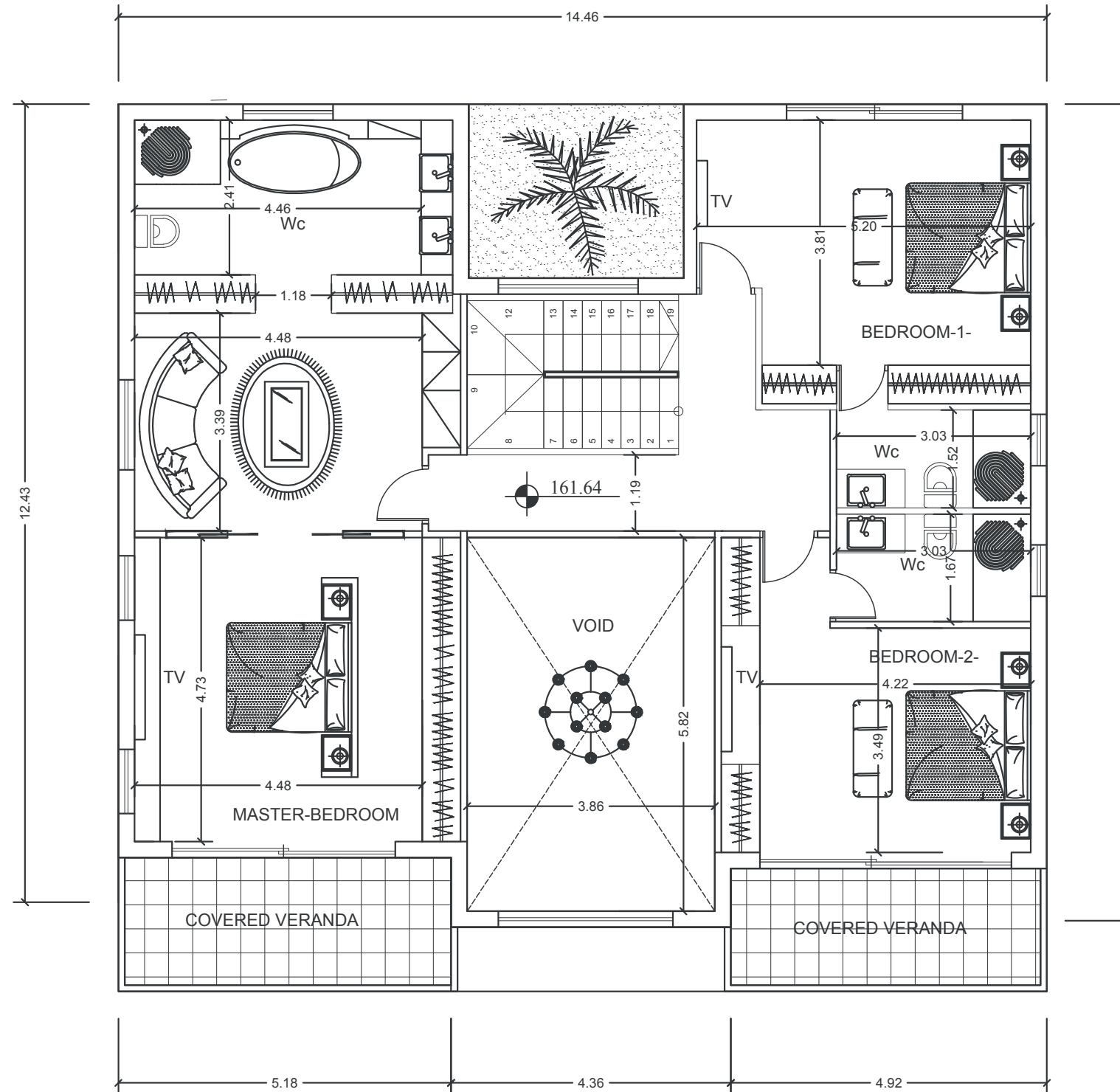
BASEMENT



GROUND FLOOR



FIRST FLOOR



KALEIDE

Build your dream

Kaleide Property Group is a real estate development company based in Cyprus with an impressive portfolio of ground-breaking projects.

Through its **SMART** property package, Kaleide offers affordable elegance accessible for family living or for long-term investment while through its **SELECT** package, it boasts a selection of properties, addressed to the high-end buyer.

With a focus on the transparency of the procedure, Kaleide offers premium residential and commercial properties for discerning clients. We work openly and with transparency with all our partners, promoting an inclusive and diverse brand strategy and aim to promote better living for all through sustainable and smart projects with a flair for high aesthetics.

Our team's combined experience enables us to be local experts with global industry knowledge, transforming Cyprus's property market and creating a new approach for real estate.




AFFORDABLE ELEGANCE




PREMIUM ELEGANCE

CONTACTS

 www.kaleidegroup.com

 +357 25 100 688

 info@kaleidegroup.com

 Leoforos Amathountos 2, Sun City Beach Complex
Shop 1-2, 4531, Mouttagiaka Limassol

