



PREMIUM ELEGANCE

WALTON TOWER

WALTON TOWER

Walton Tower is a striking business centre in the western part of Limassol. Our approach to commercial office design is largely determined by location and this area is becoming one of the most attractive and developed parts. The project would be a suitable choice for a growing business. This building is designed for professionals who appreciate an inspiring work environment with panoramic sea and city views.

CONTENT

WALTON TOWER	3
THE PROJECT	4-11
THE DETAILS	12-15
TURNKEY FINISHES	16-17
COMMERCIAL SPACE	18-23
RESTAURANT	24-29
THE LOCATION	30-41
MAP	42-43
PLANS	44-57
KALEIDE	58-59
CONTACT	60





THE PROJECT

Aesthetically pleasing and flexible workspaces in the heart of the western part of Limassol. Among Walton Tower's 7 floors are open-space offices with breathtaking views. Its impressive roof terrace is ideal for office entertaining and multi-purpose events and a modern/elegant restaurant.



WALTON TOWER

THE DETAILS

- Varied workspaces
- 7 floors of commercial areas
- Use of color psychology with a sophisticated design
- Panoramic sea and city views
- Natural and eco-friendly elements
- Integrated technology
- Recreational and lounge spaces (nap rooms are also an emerging trend)
- Elegant and modern restaurant





TURNKEY FINISHES

- Completed finishing's
- Marble floors and walls in toilets & bathrooms
- Ecomaterial and Natural colours
- Internal space full of light and air
- Double glazed thermal aluminium window frames
- Wood
- Landscaped Gardens

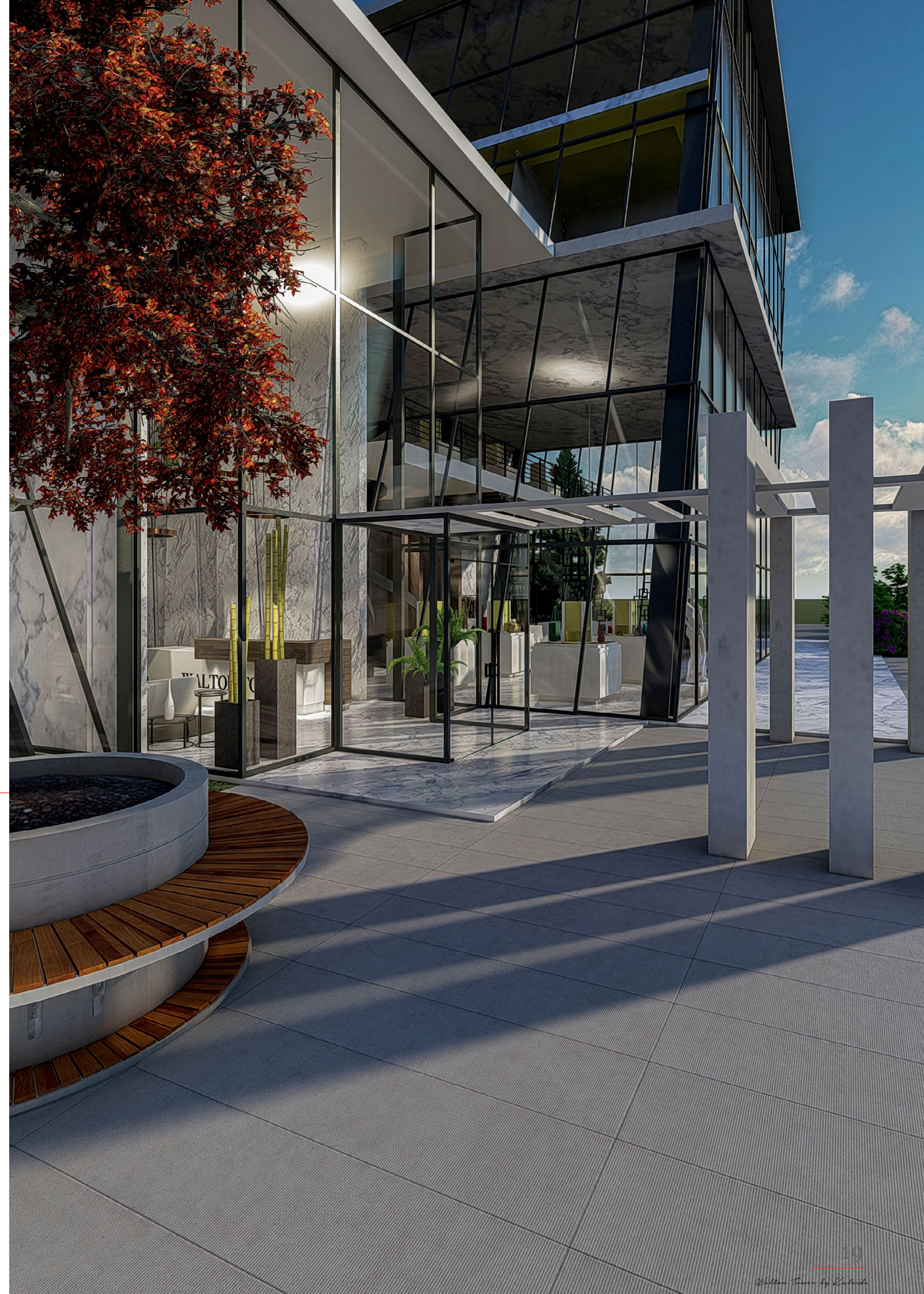
COMMERCIAL SPACES

Walton Tower, with its futuristic glass exterior, is designed to meet all seismic and mechanical requirements. As for the inside it features acoustic panels and absorption systems in order to provide a level of noise control.

The ground floor is suitable for banks or retail establishments, thanks to the large showcase and spacious layout. While at the main entrance is the reception area.

The showcase makes the internal space look spacious. This commercial space is ideal for businesses like IT, commercial, financial, etc.

A large basement or uncovered parking area with easy access to the main road







RESTAURANT

A modern touch to your work space! Enjoy a sophisticated dining atmosphere with breathtaking views, perfect for intimate gatherings or celebrations. The best choice for professionals looking to savor a delightful meal without leaving the comfort of their workplace.









INTERIOR SPACES

Fully furnished and aplianced offices, by the best suppliers with all the technology that is needed internet fiber, satelite, se-curity system, ETC provisions, raiced floors and VRV system.





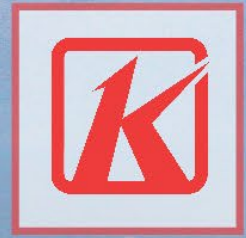
A professional home to excel while enjoying the benefits of a premium business location

THE LOCATION

Located in the western part of Limassol, is the city's newest thriving area both for business and as a residential destination. A rapidly developing area with excellent infrastructure and excellent investment potential, this area is home to some of the country's most prestigious developments. City of Dreams Mediterranean, Europe's largest integrated resort casino, MYMALL one of Cyprus biggest malls and the port is located in the area which is beneficial for multinational companies for worldwide connections and sea transportation.

LOCATION BENEFITS

- Arm's reach to the port
- An exciting and thriving business centre
- Home to huge real estate developments
- Home to businesses and multinationals of global importance
- Prestigious commercial address in the western part of Limassol
- Easy access to the highway and city center within 10 minutes
- Multinationals benefit from close proximity to the port
- Close proximity to all the necessary amenities including Casino, MYMALL
- Walking distance to the New port and Ladie's mile beach



CCD
CITY OF DREAMS
MEDITERRANEAN

MY
MA
LL
LIMASSOL





CITY OF DREAMS MEDITERRANEAN
INTEGRATED RESORT

LIMASSOL GREEN
LUXURY GOLF RESORT



50m

FASOURI WATERPARK



200m



1km

MYMALL



50m

AKROTIRI SEA SIDE
&
LADY'S MILE BEACH



50-300m

SALT LAKE



50m

LIMASSOL PORT



30m



1km

LIMASSOL GREENS

200m

CITY OF DREAMS

MEDITERRANEAN

INTEGRATED RESORT

50m



50m



ZAKAKI

Salted Lake

50m

Port

30m

Lady's Mile Beach

50m

Akrotiri Seaside

60-300m



Ygia



LITC



Pascal

NEAPOLIS

HISTORIC CENTER

MESA GEITONIA

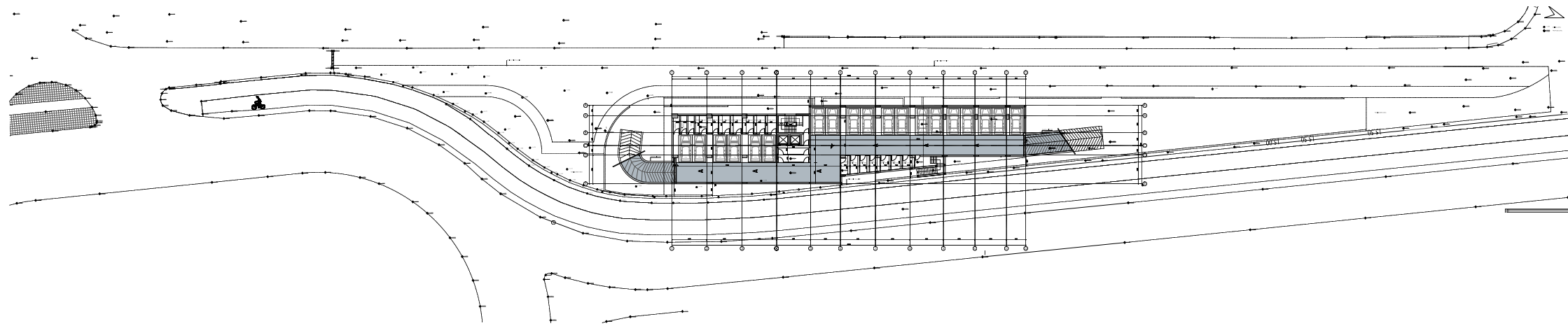
Gramma

WALTON TOWER

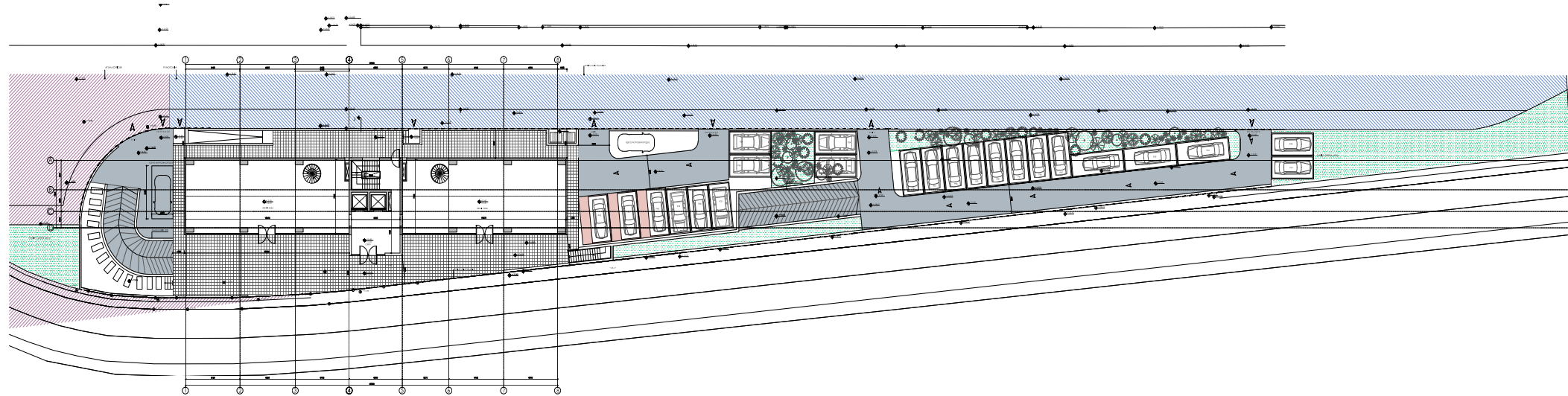
UNITS

No	Floor	Type	Covered internal area (sq.m.)	Covered veranda (sq.m.)	Roof Garden (sq.m.)	WC	Storage (sq.m.)	Common Area (sq.m.)	Parking	Total Area (sq.m.)
No 001	Ground	Shop+Mezzanine	225.00	0.00	0.00	2	11.34	29.35	2	265.690
No 002		Shop+Mezzanine	225.00	0.00	0.00	2	18.18	29.35	2	272.530
No 101	1	Office	149.40	45.35	0.00	3	6.93	19.49	2	221.170
No 102		Office	171.00	23.60	0.00	2	6.78	22.31	2	223.690
No 201	2	Office	171.00	23.60	0.00	2	6.78	22.31	2	223.690
No 202		Office	149.40	45.35	0.00	3	6.78	19.49	2	221.020
No 301	3	Office	149.40	45.35	0.00	3	6.78	19.49	2	221.020
No 302		Office	171.00	23.60	0.00	2	6.78	22.31	2	223.690
No 401	4	Office	171.00	23.60	0.00	2	6.78	22.31	2	223.690
No 402		Office	149.40	45.35	0.00	3	8.22	19.49	2	222.460
No 501	5	Office	149.40	45.35	0.00	3	6.78	19.49	2	221.020
No 502		Office	171.00	23.60	0.00	2	8.22	22.31	2	225.130
No 601	6	Office	171.00	23.60	yes	2	6.78	22.31	2	223.690
No 602		Office	149.40	45.35	yes	3	8.22	19.49	2	222.460

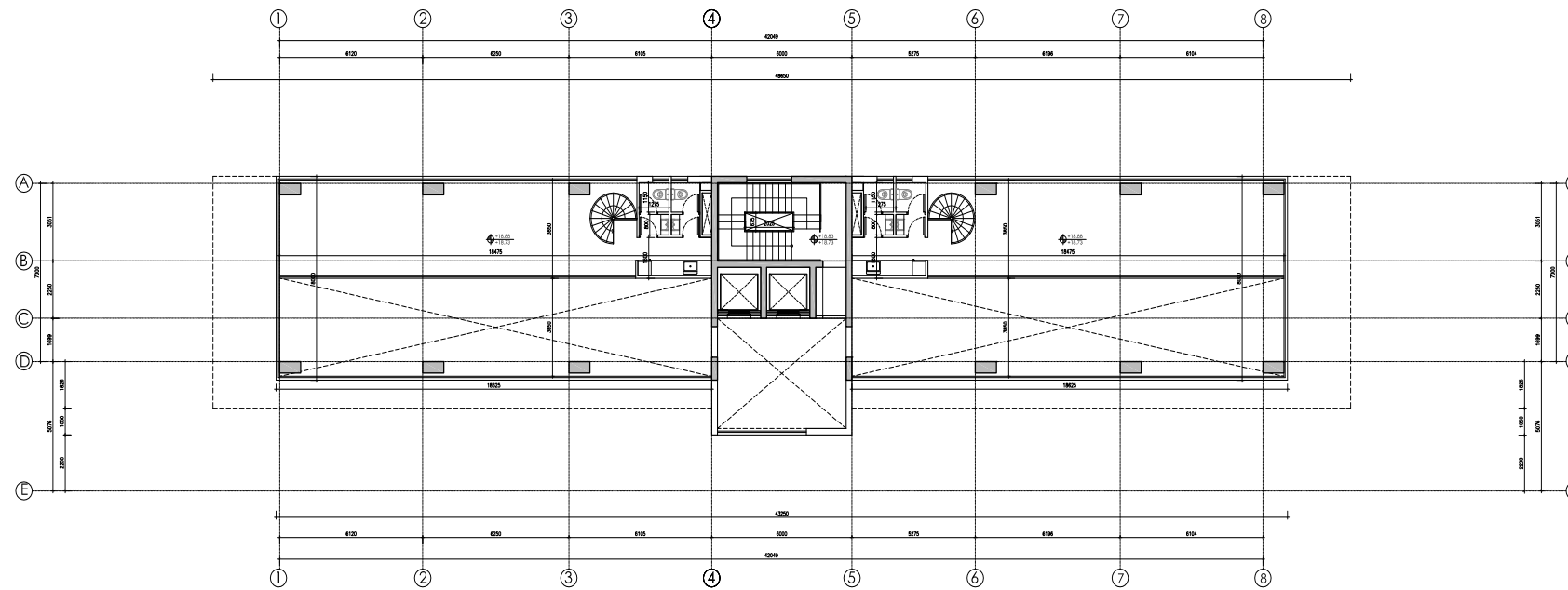
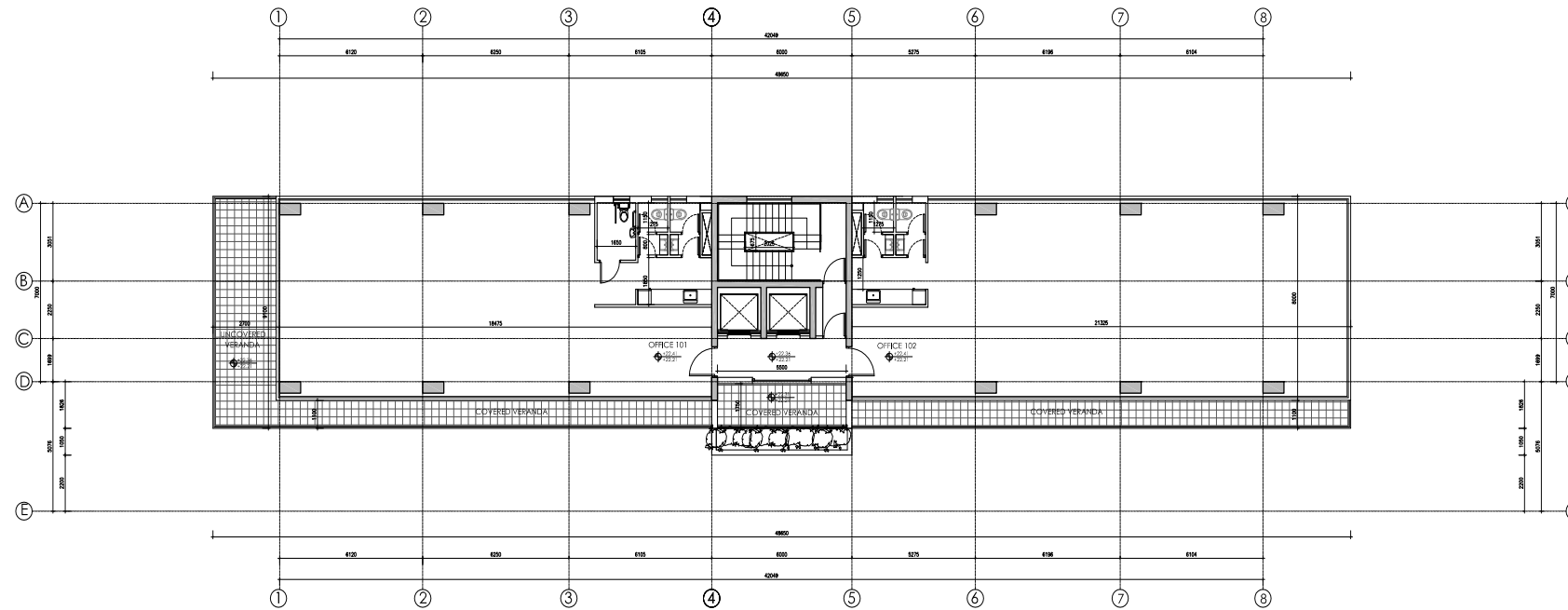
BASEMENT



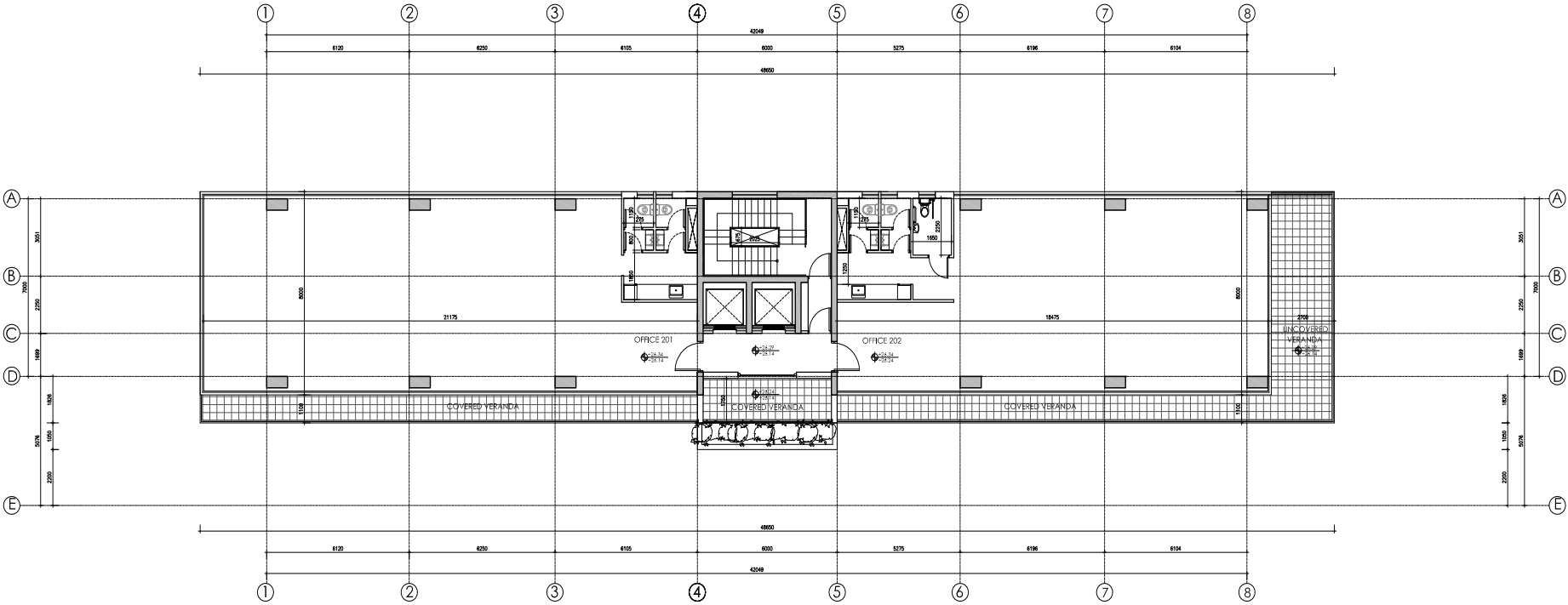
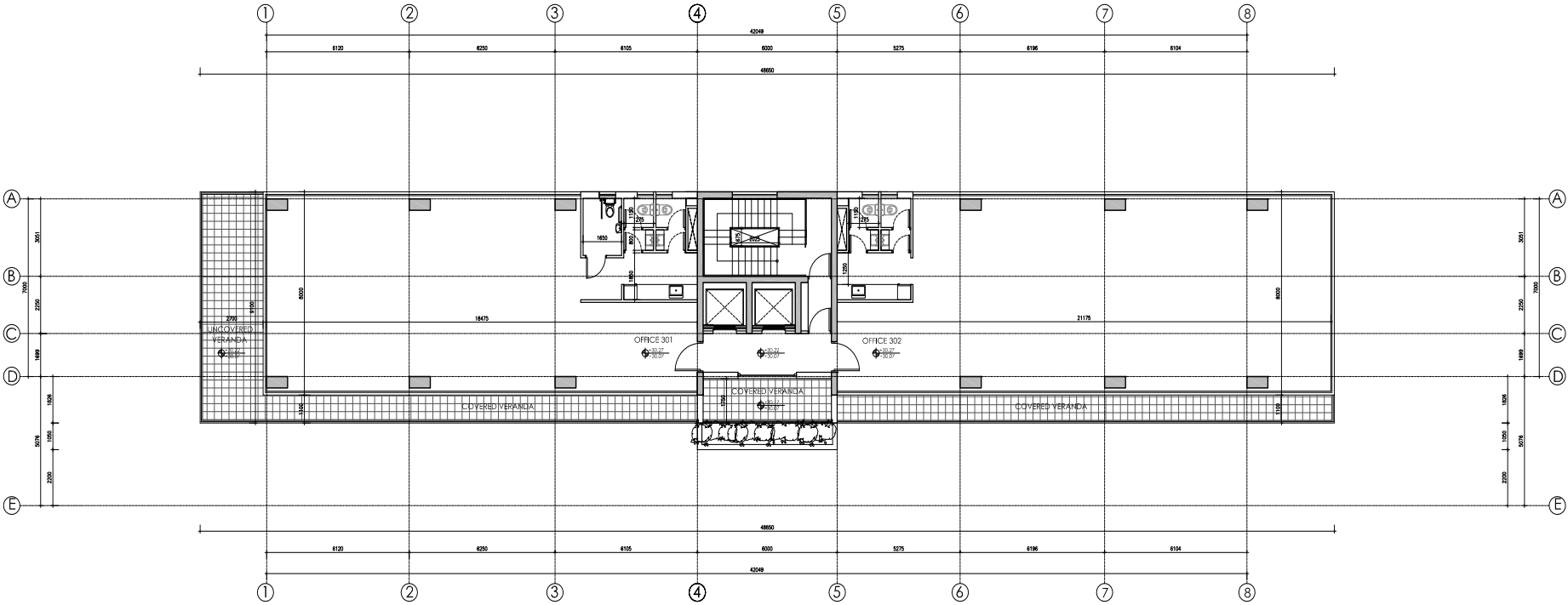
GROUND FLOOR



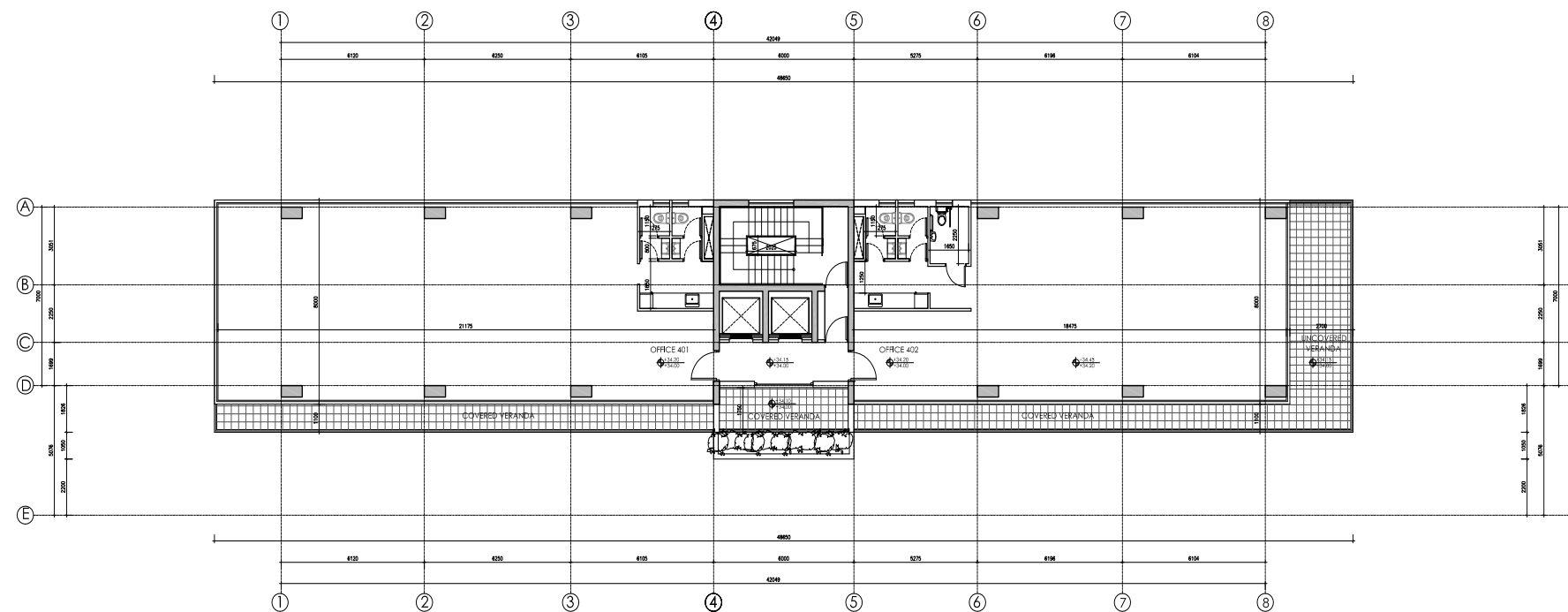
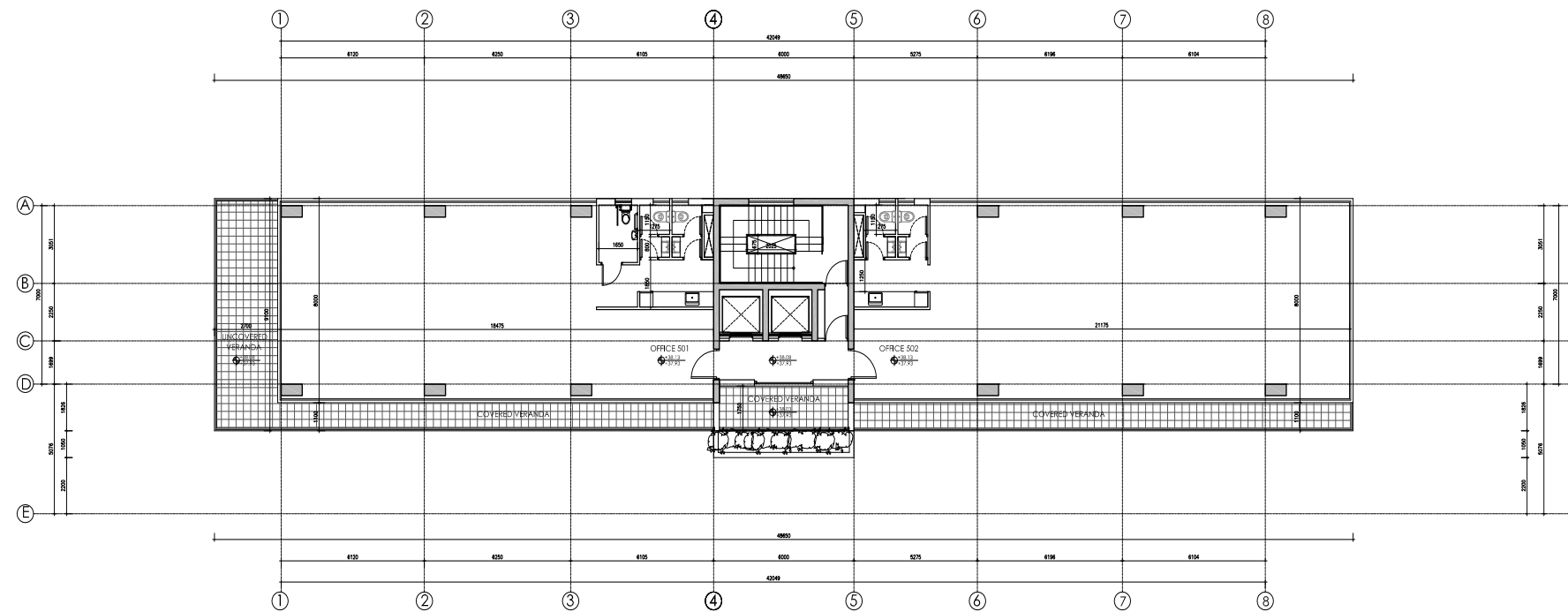
1st FLOOR



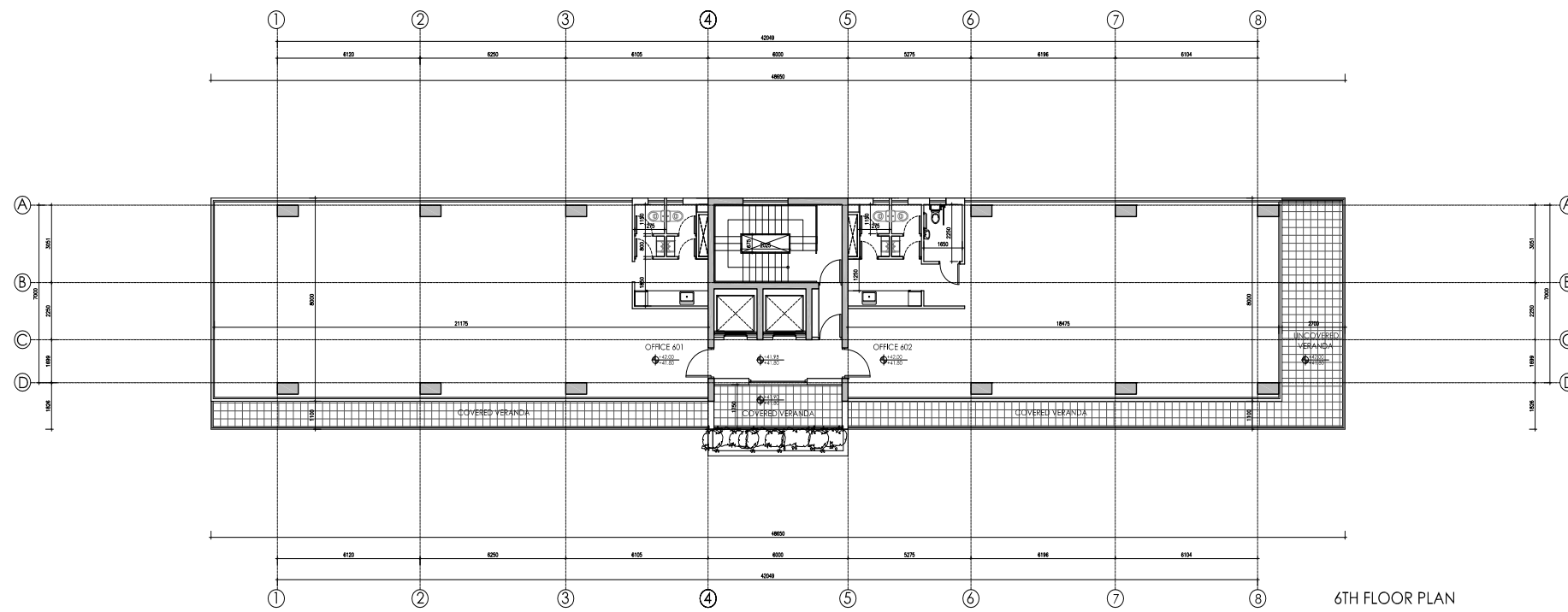
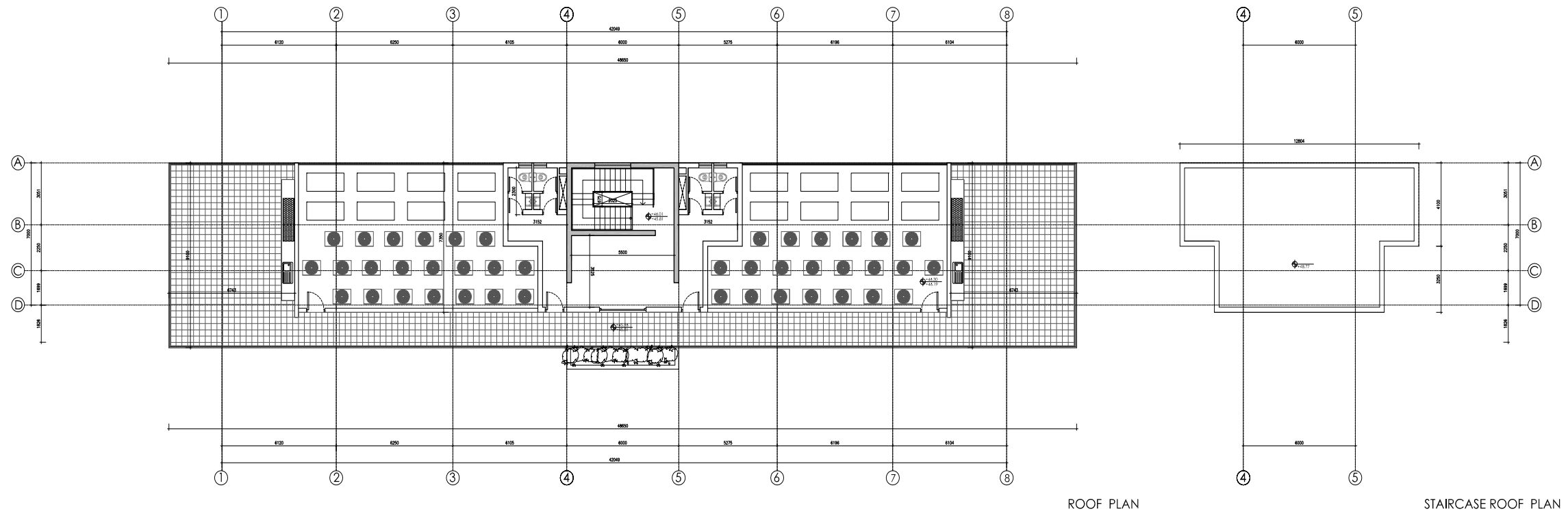
2nd & 3rd FLOOR



4th & 5th FLOOR



6th FLOOR



KALEIDE

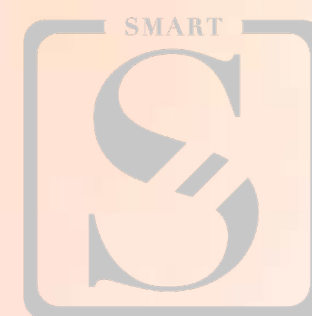
Build your dream

Kaleide Property Group is a real estate development company based in Cyprus with an impressive portfolio of ground-breaking projects.

Through its **SMART** property package, Kaleide offers affordable elegance accessible for family living or for long-term investment while through its **SELECT** package, it boasts a selection of properties, addressed to the high-end buyer.

With a focus on the transparency of the procedure, Kaleide offers premium residential and commercial properties for discerning clients. We work openly and with transparency with all our partners, promoting an inclusive and diverse brand strategy and aim to promote better living for all through sustainable and smart projects with a flair for high aesthetics.

Our team's combined experience enables us to be local experts with global industry knowledge, transforming Cyprus's property market and creating a new approach for real estate.




AFFORDABLE ELEGANCE





PREMIUM ELEGANCE

CONTACTS

 www.kaleidegroup.com

 +357 25 100 688

 info@kaleidegroup.com

 Leoforos Amathountos 2, Sun City Beach Complex
Shop 1-2, 4531, Mouttagiaka Limassol

