



PREMIUM ELEGANCE

METROPOLITAN VILLAS

METROPOLITAN

Metropolitan Villas blends utmost privacy and aesthetics in a sophisticated development that only a Mediterranean lifestyle can offer. Enter home and feel the joy of living at your own inspiring space.

CONTENT

| | |
|------------------|-------|
| METROPOLITAN | 3 |
| THE PROJECT | 4-7 |
| THE DETAILS | 8-9 |
| TURNKEY FINISHES | 10-17 |
| ELITE LIVING | 18-21 |
| THE LOCATION | 22-23 |
| MAP | 24-25 |
| PLANS | 26-33 |
| KALEIDE | 34-35 |
| CONTACT | 36 |





THE PROJECT

Metropolitan Villas comprises of two beautiful villas in one of the most diachronically prestigious locations in Limassol offering comfortable interior spaces, modern design and large gardens. These homes enjoy the greatest privacy and will be equipped with the top of the line materials.

THE DETAILS

Sophisticated design

Spacious plots

Large gardens

Tranquil area

Spacious interiors





TURNKEY FINISHES

Semi-solid parquet floors in each room | Marble floors and walls in toilets & bathrooms | High ceilings (2.90-3.20m) | Security entrance doors | Provision for under-floor heating | Provision for VRV A/C | High quality sanitary wear from European brands | Double glazed thermal aluminium window frames | High-quality kitchen cabinets from Italy | High quality wardrobes from European brands









The spaces, the privacy, the gardens, the design; a package that offers everything. A sensational place made for those who deeply appreciate ultimate relaxation.

ELITE LIVING

Metropolitan Villas is unique for its design as well as its location. Built on spacious plots and benefits from top-end finishes. The villas merge the exterior and interior spaces through a clear living experience.





THE LOCATION

Kalogiroti falls under Germasogeia municipality and is considered one of the finest spots in the area as it has been the home to some of the most renowned families in Limassol. It has always been in high-demand by upper-class buyers, both foreigners and locals who wish to build a dreamy home in an idyllic location. The area is mainly characterized by the large villas with their enormous landscaped gardens. Access to all required amenities is instant and many of the top resorts in Limassol offering five star services can be reached within couple of minutes' drive.

LOCATION BENEFITS

Upper class area

Tranquil and private

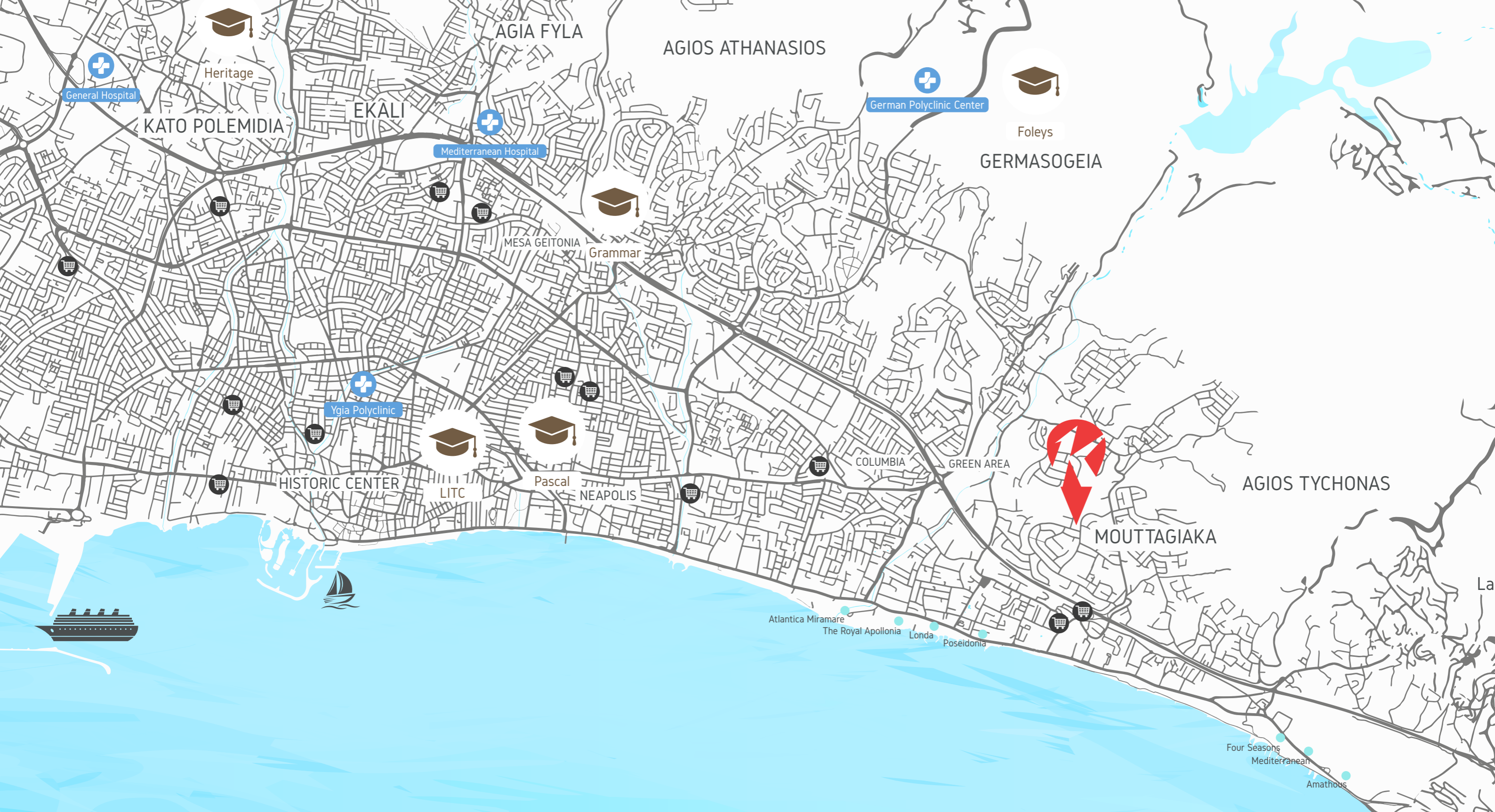
Developed infrastructure

A blend of classic and modern living

Low density – ample greenery

Great proximity to city center and resorts

A great option for permanent residence, recreation and real estate investment.



AGIA FYLA

AGIOS ATHANASIOS

GERMASOGEIA

AGIOS TYCHONAS

MOU TTAGIAKA

General Hospital

Heritage

Mediterranean Hospital

German Polyclinic Center

Foleys

Ygia Polyclinic

Grammar

HISTORIC CENTER

LITC

Pascal

NEAPOLIS

COLUMBIA

GREEN AREA

Atlantica Miramare

The Royal Apollonia

Londa

Poseidonia

Four Seasons

Mediterranean

Amathous

Atlantica Bay

METROPOLITAN

UNITS

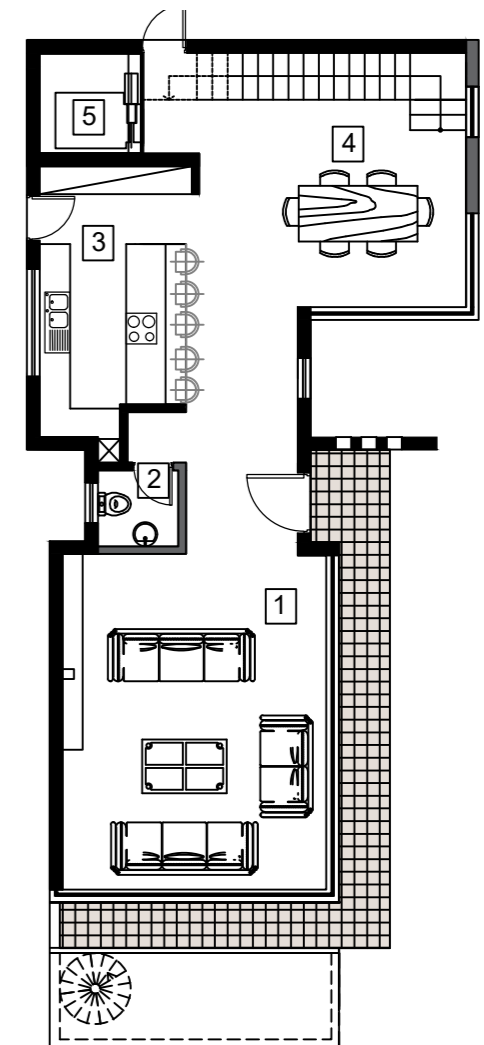
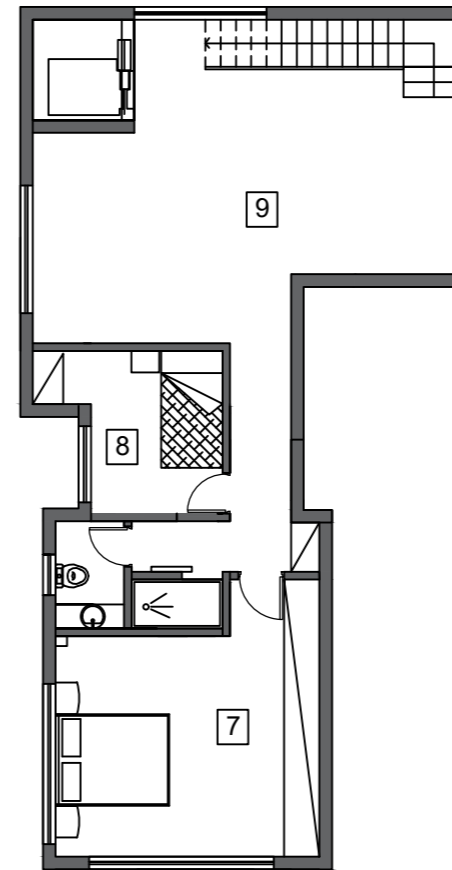
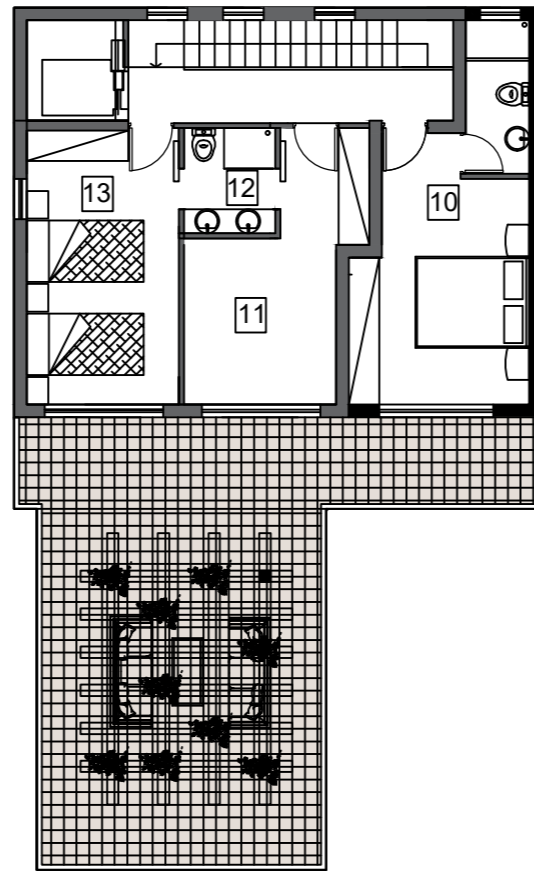
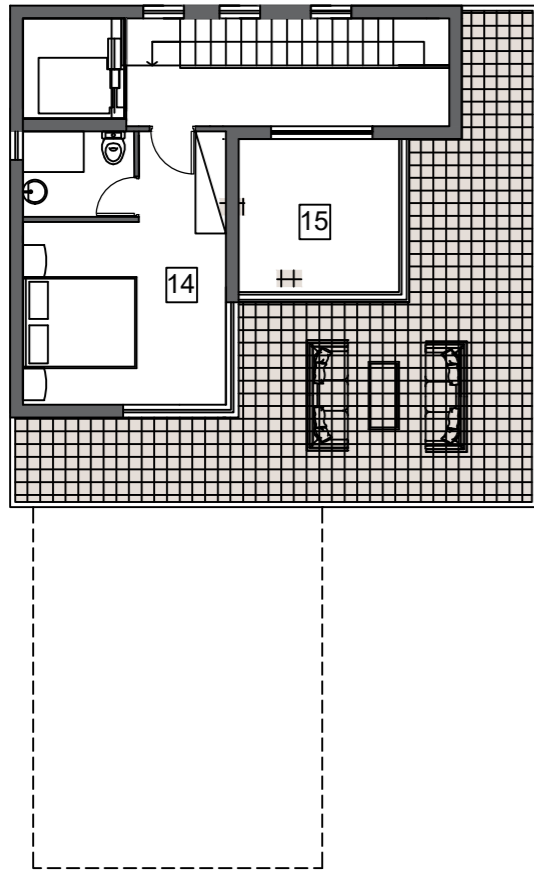
| No | Floors | Type | Bedrooms | Bathrooms | Covered Internal (sq.m.) | Roof Garden | Covered Veranda (sq.m.) | Uncovered Veranda (sq.m.) | Parking (Uncovered) | Total Covered (sq.m.) | Total Area (sq.m.) | Swimming Pool | Plot (sq.m.) |
|------|--------------|-------|----------|-----------|--------------------------|-------------|-------------------------|---------------------------|---------------------|-----------------------|--------------------|---------------|--------------|
| No 1 | 3 + Basement | Villa | 4 | 5 | 332.70 | yes | 21.95 | 34.60 | yes | 354.65 | 389.25 | Private | 560.00 |
| No 2 | 3 + Basement | Villa | 5 | 6 | 311.63 | yes | 34.10 | 50.32 | yes | 345.73 | 396.05 | Private | 549.00 |

MASTER PLAN



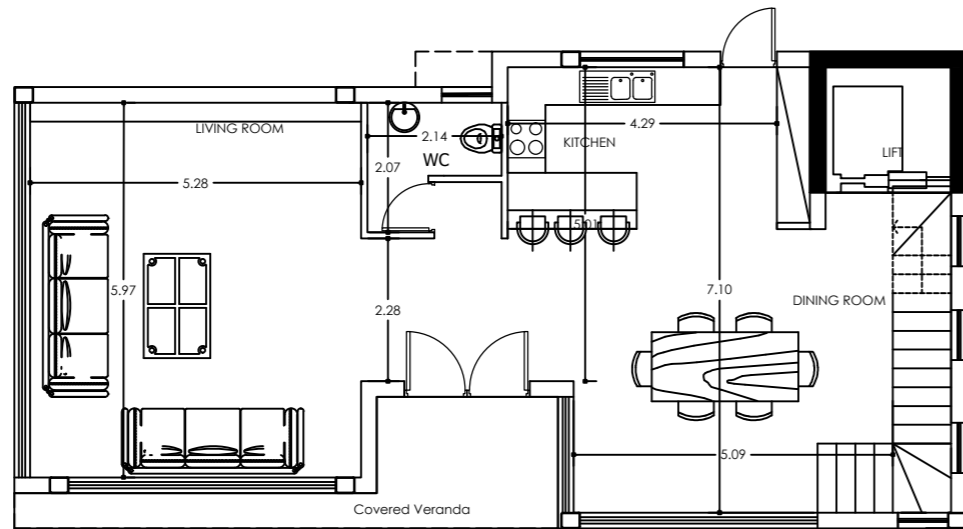
VILLA 1

- 1 LIVING AREA
- 2 WC
- 3 KITCHEN
- 4 DINING ROOM
- 5 PRIVATE LIFT
- 6 PRIVATE SWIMMING POOL
- 7 BEDROOM 1 / WC
- 8 BEDROOM 2
- 9 GYM
- 10 BEDROOM 3 / WC
- 11 BEDROOM 4
- 12 COMMON WC
- 13 BEDROOM 5
- 14 BEDROOM 6 / WC
- 15 GREEN HOUSE

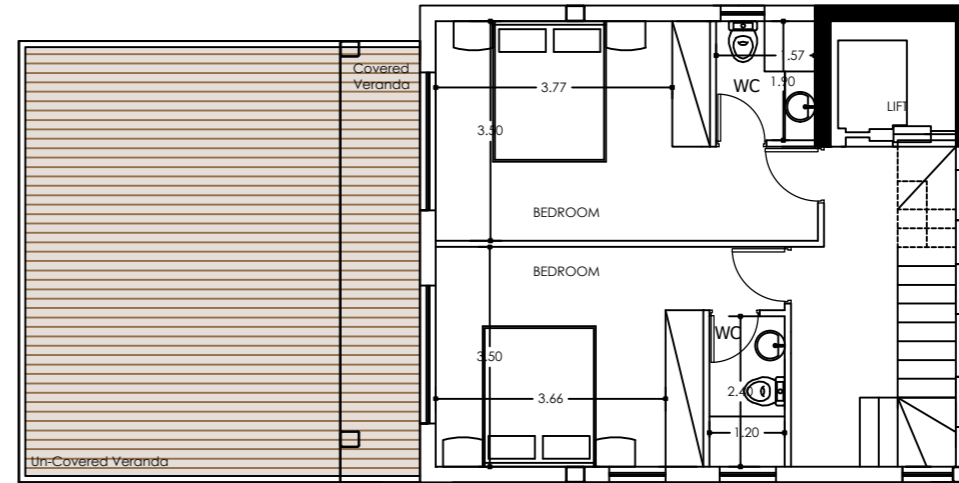


VILLA 2

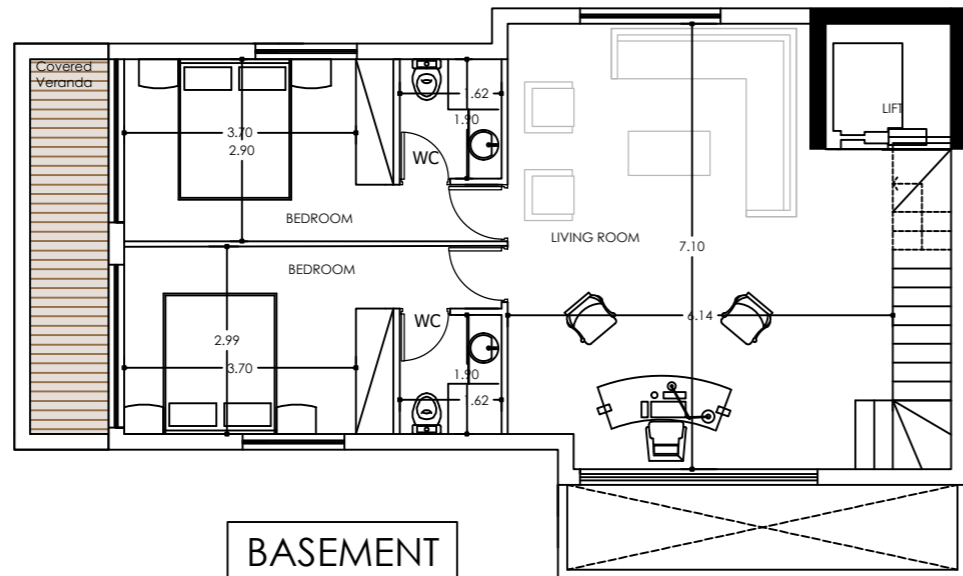
- 1 LIVING AREA
- 2 WC
- 3 KITCHEN
- 4 DINING ROOM
- 5 PRIVATE LIFT
- 6 PRIVATE SWIMMING POOL
- 7 BEDROOM 1 / WC
- 8 GYM
- 9 STORAGE
- 10 BEDROOM 2 / WC
- 11 BEDROOM 3 / WC
- 12 BEDROOM 4 / WC



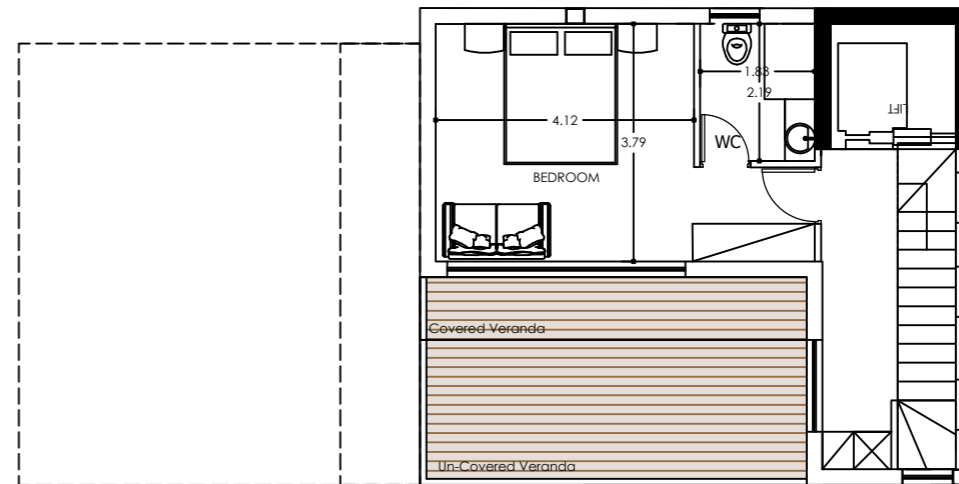
GROUND FLOOR



FIRST FLOOR



BASEMENT



SECOND FLOOR

KALEIDE

Build your dream

Kaleide Property Group is a real estate development company based in Cyprus with an impressive portfolio of ground-breaking projects.

Through its **SMART** property package, Kaleide offers affordable elegance accessible for family living or for long-term investment while through its **SELECT** package, it boasts a selection of properties, addressed to the high-end buyer.

With a focus on the transparency of the procedure, Kaleide offers premium residential and commercial properties for discerning clients. We work openly and with transparency with all our partners, promoting an inclusive and diverse brand strategy and aim to promote better living for all through sustainable and smart projects with a flair for high aesthetics.

Our team's combined experience enables us to be local experts with global industry knowledge, transforming Cyprus's property market and creating a new approach for real estate.




AFFORDABLE ELEGANCE




PREMIUM ELEGANCE

CONTACTS

 www.kaleidegroup.com

 +357 25 100 688

 info@kaleidegroup.com

 Leoforos Amathountos 2, Sun City Beach Complex
Shop 1-2, 4531, Mouttagiaka Limassol

