

AFFORDABLE ELEGANCE

HILLSIDE RESIDENCES

HILLSIDE RESIDENCES

Hillside Residences presents an exquisite collection of two luxurious housing units defined through affordable elegance with a developed infrastructure, nestled in Limassol's highly sought-after location. Meticulously designed, these homes offer unparalleled comfort for discerning families who appreciate the perfect blend of functionality and sophisticated aesthetics.

CONTENT

HILLSIDE RESIDENCES	3
THE PROJECT	4-9
THE DETAILS	10-13
TURNKEY FINISHES	14-19
THE LOCATION	20-25
MAP	26-27
PLANS	28-35
KALEIDE	36-37
CONTACT	38





THE PROJECT

Hillside Residences is a modern development of two detached houses in a prime location in Limassol. The houses are well-designed and provide comfort for families who value practicality. Amenities are easily accessible by a short drive.

All houses meet safety standards and feature three bedrooms, bathrooms, a terrace, and potential for a swimming pool. The open-plan kitchen/dining rooms are connected to the veranda.

"A perfect location for those who choose to enjoy suburban tranquility without compromising on the goodness the city offers."



THE DETAILS

Private and chic

Sophisticated design

3 and 4-bedroom homes

Roof Garden

Storage spaces

Private parking

Basement

Total covered areas from 260.4 sqm to 267.6 sqm



*"A great place for permanent residence, recreation and
real estate investment"*



TURNKEY FINISHES

- Energy Efficiency Rating: A
- High-quality tiles
- High-quality european laminate floors
- High-quality non-slip tiles for bathrooms
- Double-layer aluminum insulation-glass windows
- European made security entry door
- Provision for split air conditioner
- European brand sanitary ware
- Eu standard high quality kitchen cabinets and wardrobes
- Countertops in synthetic granite
- High-rise design (2.90-3.20m)







THE LOCATION

Agia Fyla has been one of the most sought-after locations in Limassol and has experienced a big growth the last years especially by families that were searching for a quiet living without having to sacrifice convenience, good access to the city's amenities but also to their jobs. An area with a good investment potential, home to both locals and foreigners that help transformed the area into a suburban center.

LOCATION BENEFITS

- Peaceful residential location
- Developed infrastructure
- Modern and comfortable accommodation
- Proximity to the city centre and the sea



*"Refined living at Hillside Residences: luxury, functionality,
and your private oasis in sought-after Limassol."*





AGIA FYLA

AGIOS ATHANASIOS

German Polyclinic Center

Foleys

GERMASOGEIA

Mediterranean Hospital

Grammar

MESA GEITONIA

Ygia Polyclinic

HISTORIC CENTER

LITC

Pascal

NEAPOLIS

COLUMBIA

GREEN AREA

MOUTTAGIACA

AGIOS

Atlantica Miramare

The Royal Apollonia Londa

Poseidonia

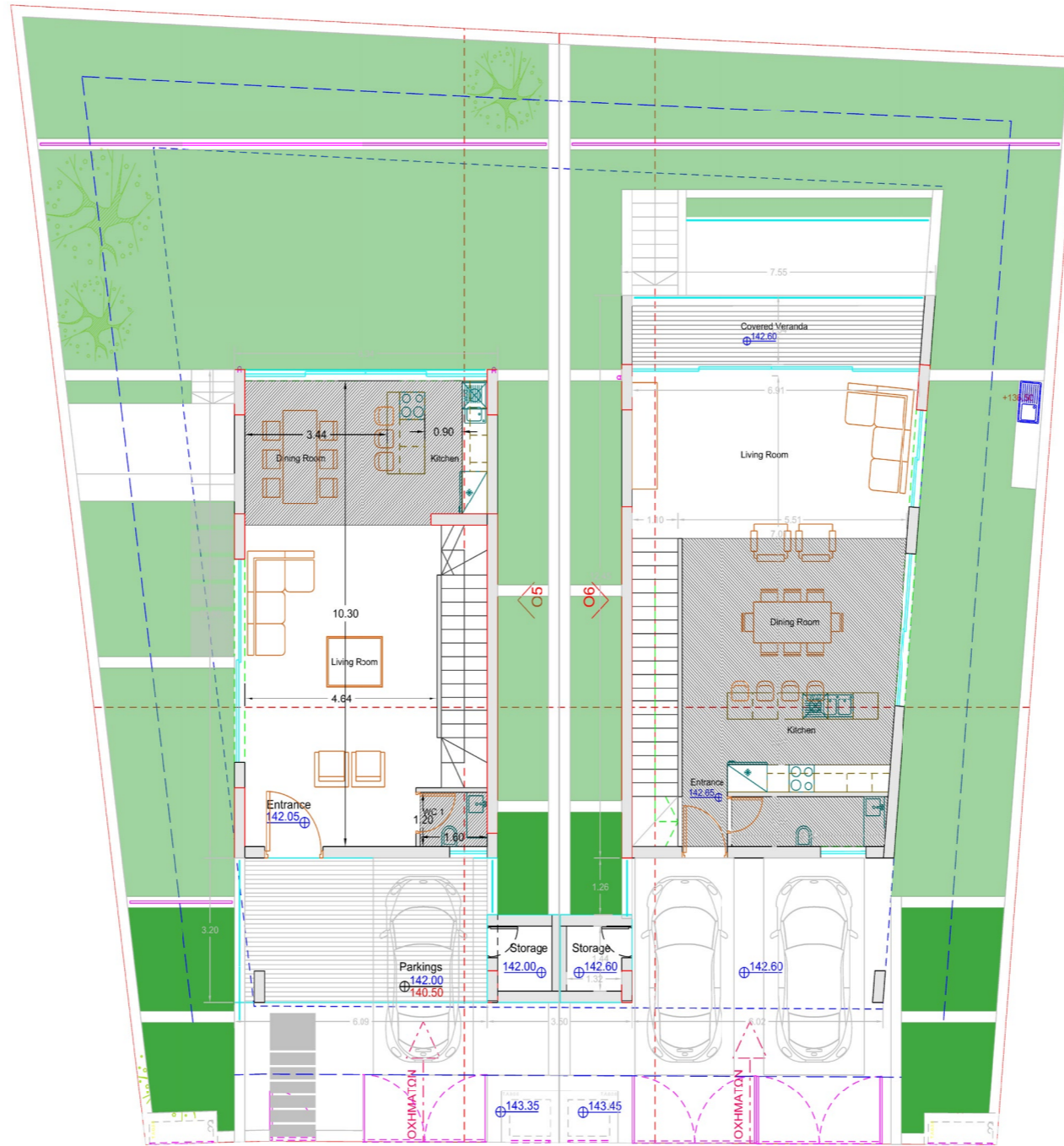
HILLSIDE RESIDENCES

Four Seasons
Mediterranean

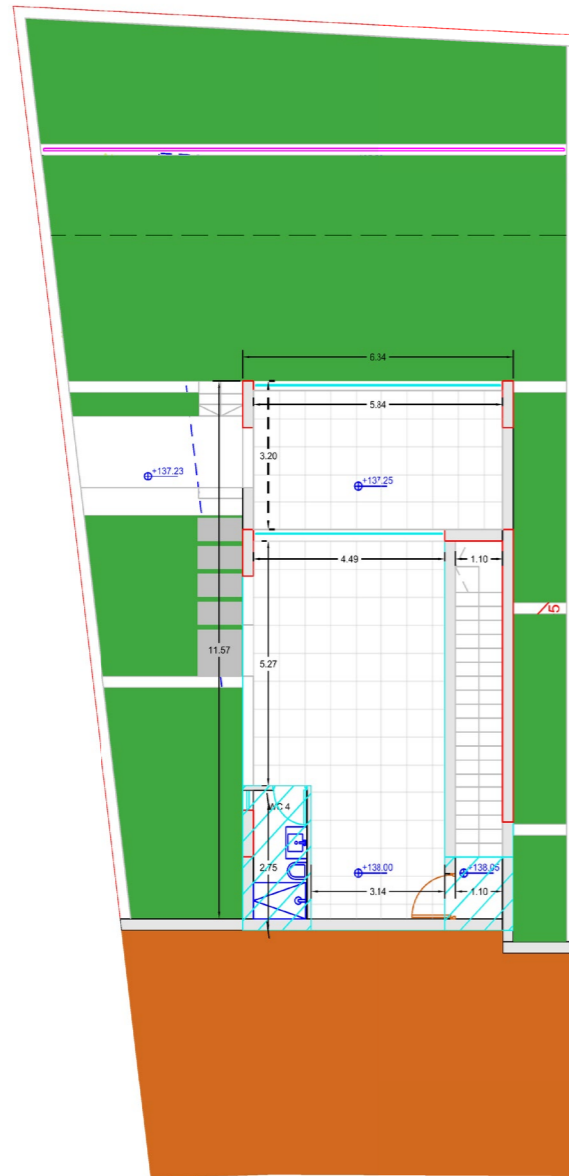
UNITS

No	Floor	Type	Bedrooms	Bathrooms	Covered internal area (sq.m.)	Covered veranda (sq.m.)	Roof Garden uncovered (sq.m.)	Storage	Parking	Total Covered (sq.m.)	Total Area (sq.m.)	Plot Size	Swimming Pool
H1	3	House	4	4	164.00	51.00	0.00	3.50	15.00	233.50	233.50	280	NO
H2	3	House	3+1 office	5	236.50	56.10	12.90	3.50	30.00	326.10	339.00	281	NO

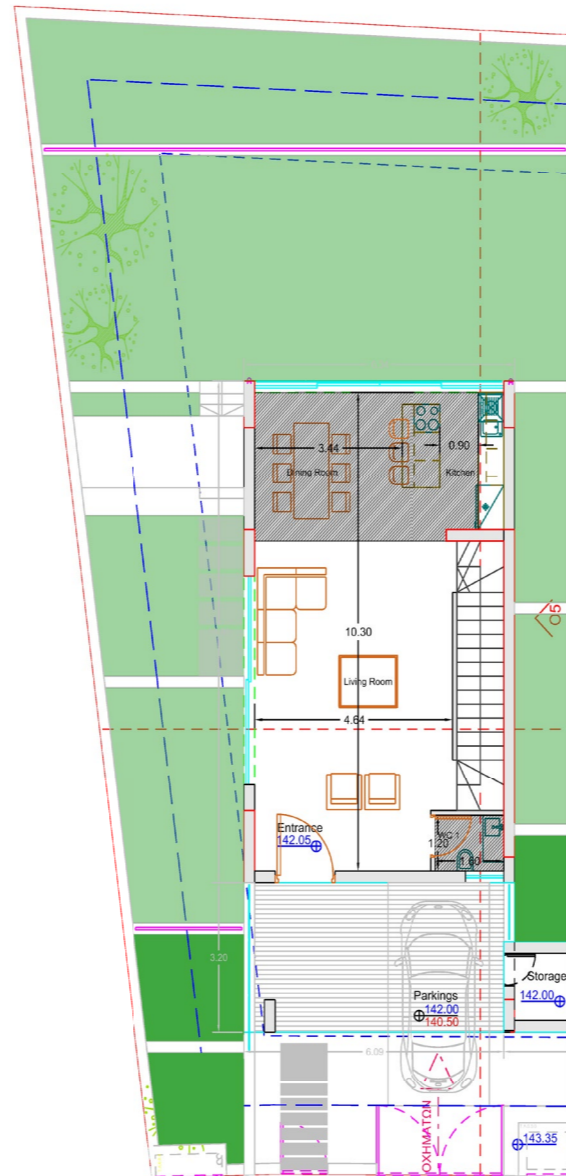
MASTERPLAN



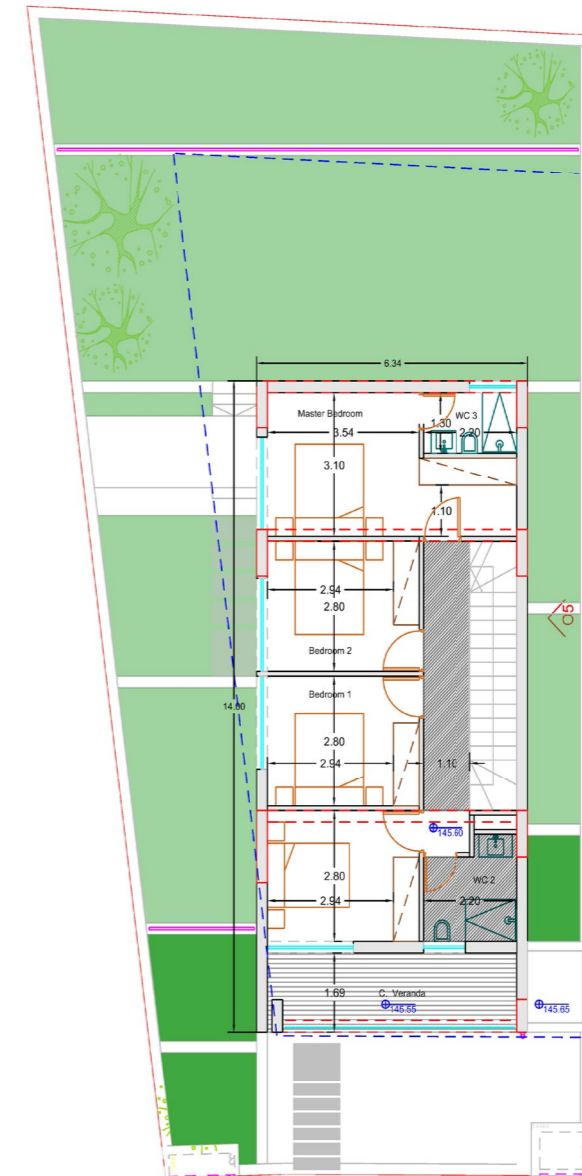
HOUSE ONE



Basement
18.75 m²

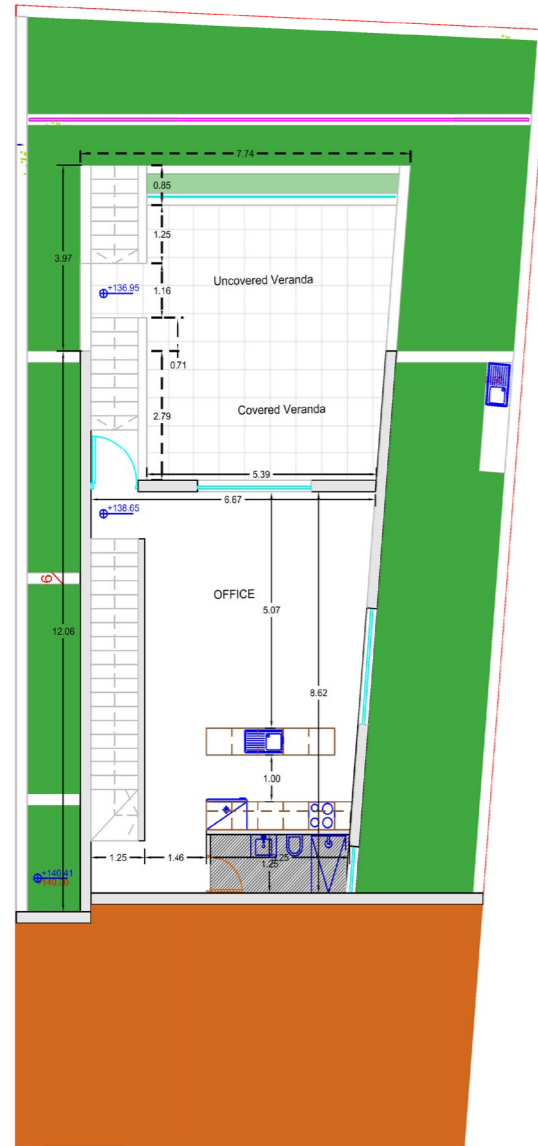


Ground Floor
68.45 m²

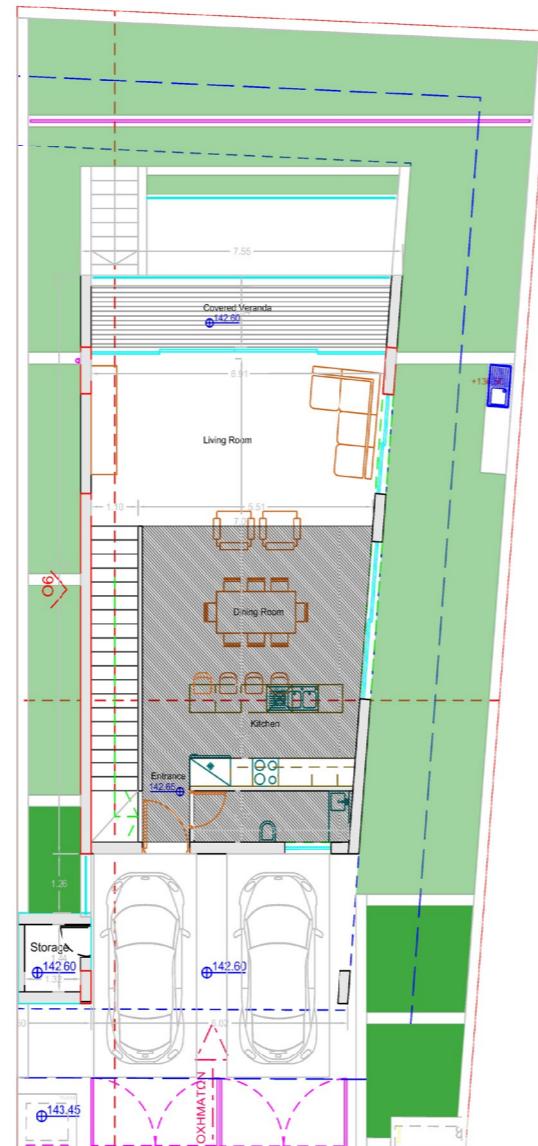


First Floor
78.00 m²

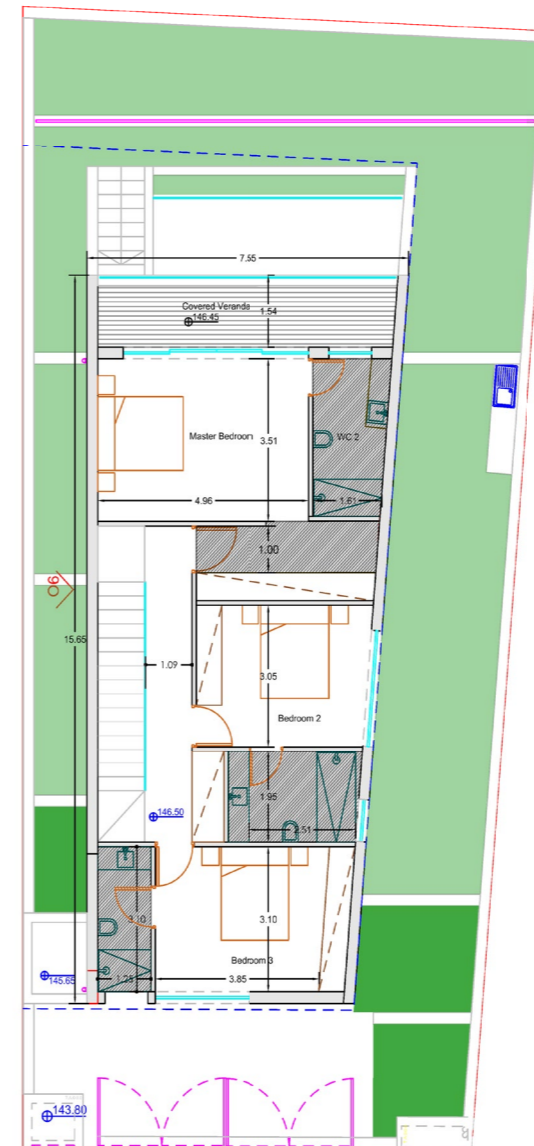
HOUSE TWO



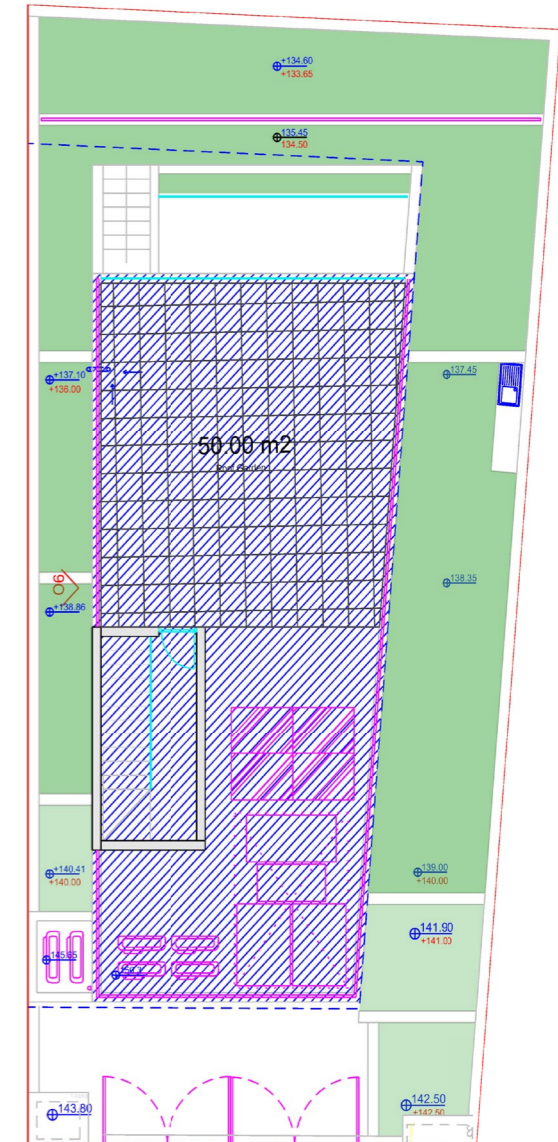
Basement
62.15 m²



Ground Floor
76.15 m²



First Floor
96.65 m²



Roof
104.00 m²

KALEIDE

Build your dream

Kaleide Property Group is a real estate development company based in Cyprus with an impressive portfolio of ground-breaking projects.

Through its **SMART** property package, Kaleide offers affordable elegance accessible for family living or for long-term investment while through its **SELECT** package, it boasts a selection of properties, addressed to the high-end buyer.

With a focus on the transparency of the procedure, Kaleide offers premium residential and commercial properties for discerning clients. We work openly and with transparency with all our partners, promoting an inclusive and diverse brand strategy and aim to promote better living for all through sustainable and smart projects with a flair for high aesthetics.

Our team's combined experience enables us to be local experts with global industry knowledge, transforming Cyprus's property market and creating a new approach for real estate.




AFFORDABLE ELEGANCE





PREMIUM ELEGANCE

CONTACTS

 www.kaleidegroup.com

 +357 25 100 688

 info@kaleidegroup.com

 Leoforos Amathountos 2, Sun City Beach Complex
Shop 1-2, 4531, Mouttagiaka Limassol

