



AFFORDABLE ELEGANCE

LAKE VALLEY

LAKE VALLEY

Lake Valley, a single-family villa in Limassol Lake District, with beautiful surroundings and a unique natural oxygen bar, known as "Little Switzerland" by the locals, through the SMART hand-over standard, every plant and every tree, condensing every bit of ingenuity; every stone and brick, indulge in silk Glamour and creates your first choice for home in the Mediterranean.

CONTENT

LAKE VALLEY	3
THE PROJECT	4-7
THE DETAILS	8-9
TURNKEY FINISHES	10-15
COMFORT LIVING	16-17
THE LOCATION	18-19
MAP	20-21
PLANS	22-29
KALEIDE	30-31
CONTACT	32



THE PROJECT

Lake Valley features 8 villas that redefine city living. It's located in the peaceful lake district of Foinikaria in Limassol. The modern architectural style is perfectly integrated with the natural environment. Providing you with a relaxing, comfortable living environment while enjoying the convenience of city life.

THE DETAILS

8 Villas

Total covered areas from 123.8 sqm to 138.6 sqm

2-3 Bedrooms

40m² Terrace



TURNKEY FINISHES

High-quality tiles | High-quality European laminate floors | High-quality non-slip tiles for bathrooms | Double-layer aluminum insulation glass windows | Security entry doors | |The countertop is made of synthetic granite |High-rise design (2.90-3.20 meters)

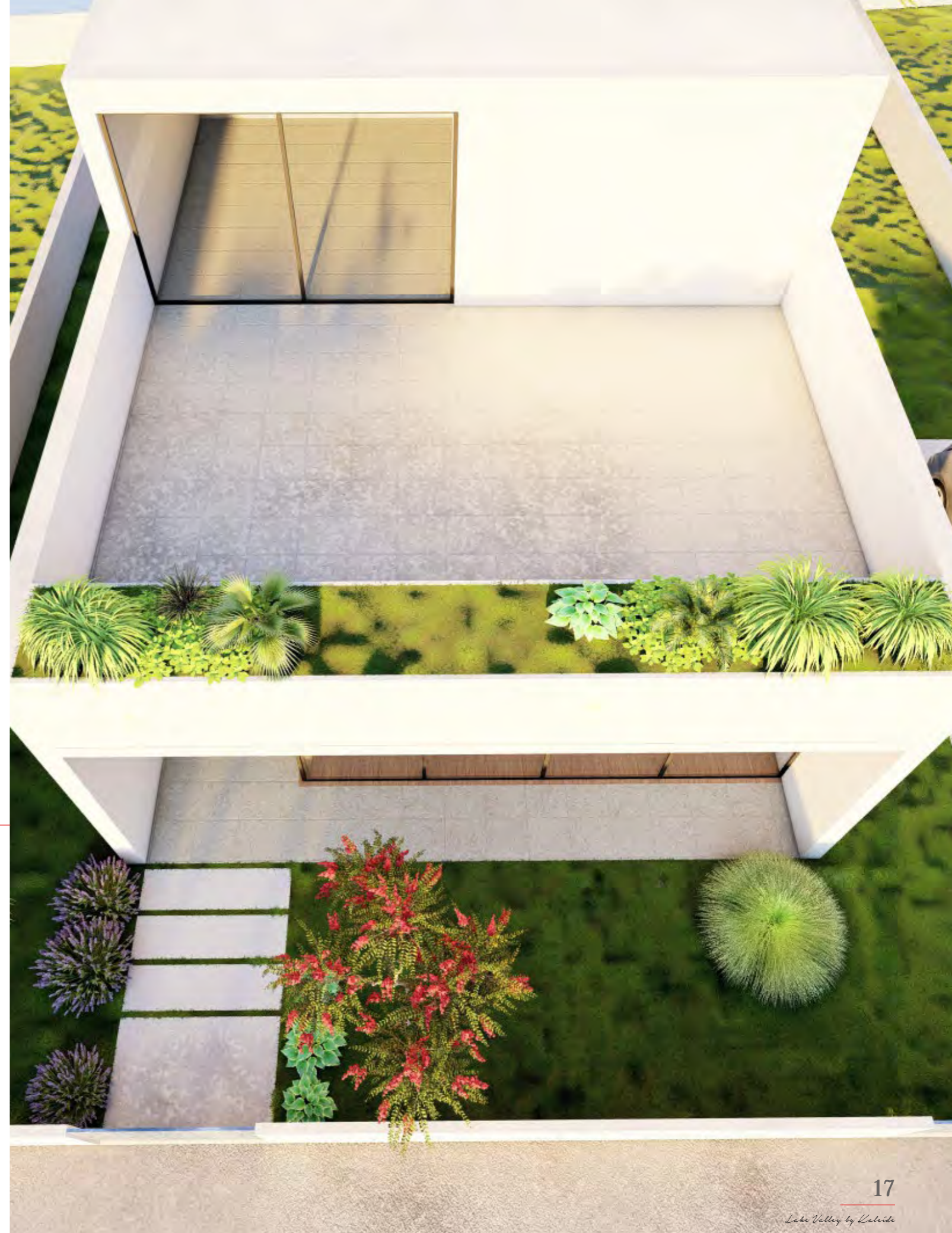




Modern living spaces, tranquil views and ample outdoors, enjoy life in Cyprus most cosmopolitan city.

Experience a luxury lifestyle

With modern design taste, there is a noble orientation of life. The stunning exterior of Lake Valley, the design-centric architecture redefines the overall development, the interior is open space, with high-end finishes designed without being too luxurious, with a unique design taste, providing you with a different living style. The unique interior design of the project, the choice of 2 or 3 bedrooms, is the ideal place for your family life or long-term investment.



LOCATION

Located in the tranquil lake district of Foinikaria in Limassol, Lake Valley offers 8 luxury villas offering authentic Mediterranean living with a laid-back ambience and splendid views of Limassol's water and sky. After a 15-minute drive to the lake view, you can switch to the beach and arrive at Dasoudi Beach, the best city beach in Limassol. The surrounding living facilities are complete, and the largest supermarket in the city, the number one private school, banks, pharmacies, restaurants, football fields, movie theaters, etc. can be reached in a 15-minute life circle. Enjoy a quiet and private rural life in the city. Provide your child with the best educational resources and the best private and public schools.

Geographical advantage Exquisite lake area room, sitting on a natural oxygen bar, opening the window to have a "Little Switzerland", close to the city center and the sea Peaceful and safe location Modern and comfortable living environment

An ideal place for those who like to enjoy the tranquility of the suburbs but want to be close to the city.

Excellent place for permanent residence, entertainment and real estate investment



AGIA FYLA

AGIOS ATHANASIOS

EKALI

Mediterranean

German Polyclinic

Foleys

GERMASOGEIA

FOINIKARIA

LAKE VALLEY

MESA GEITONIA

Grammar

Ygia

HISTORIC CENTER

LITC

Pascal

NEAPOLIS

COLUMBIA

GREEN AREA

AGIOS TYCHONAS

MOU TTAGI AKA

Atlantica Miramare

The Royal Apollonia Londa

Poseidonia

Four Seasons

Mediterranean

Amathous

60km

20²⁰

Lake Valley by Kaleide
Lake Valley by Kaleide

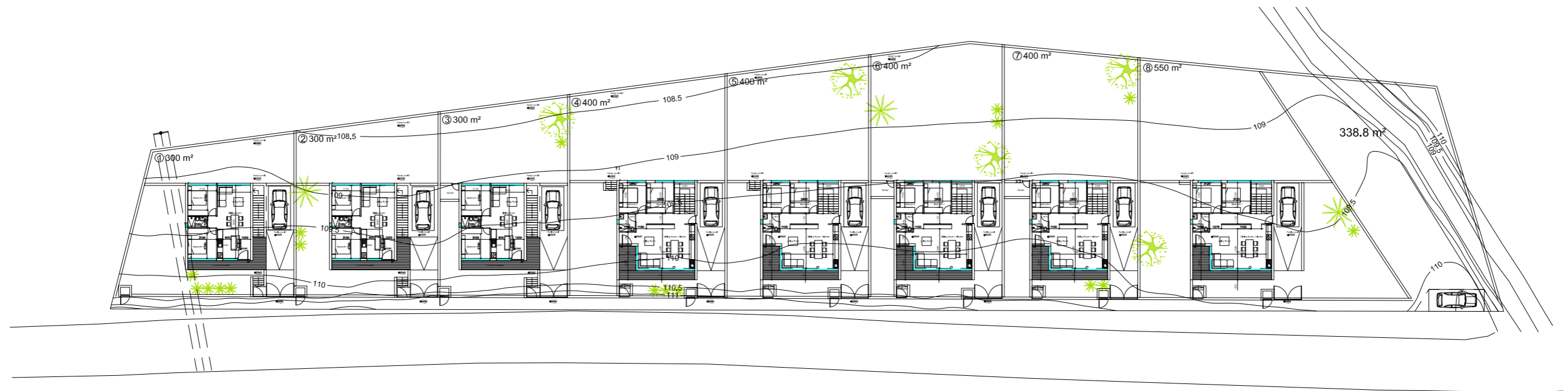
20²¹

Lake Valley by Kaleide
Lake Valley by Kaleide

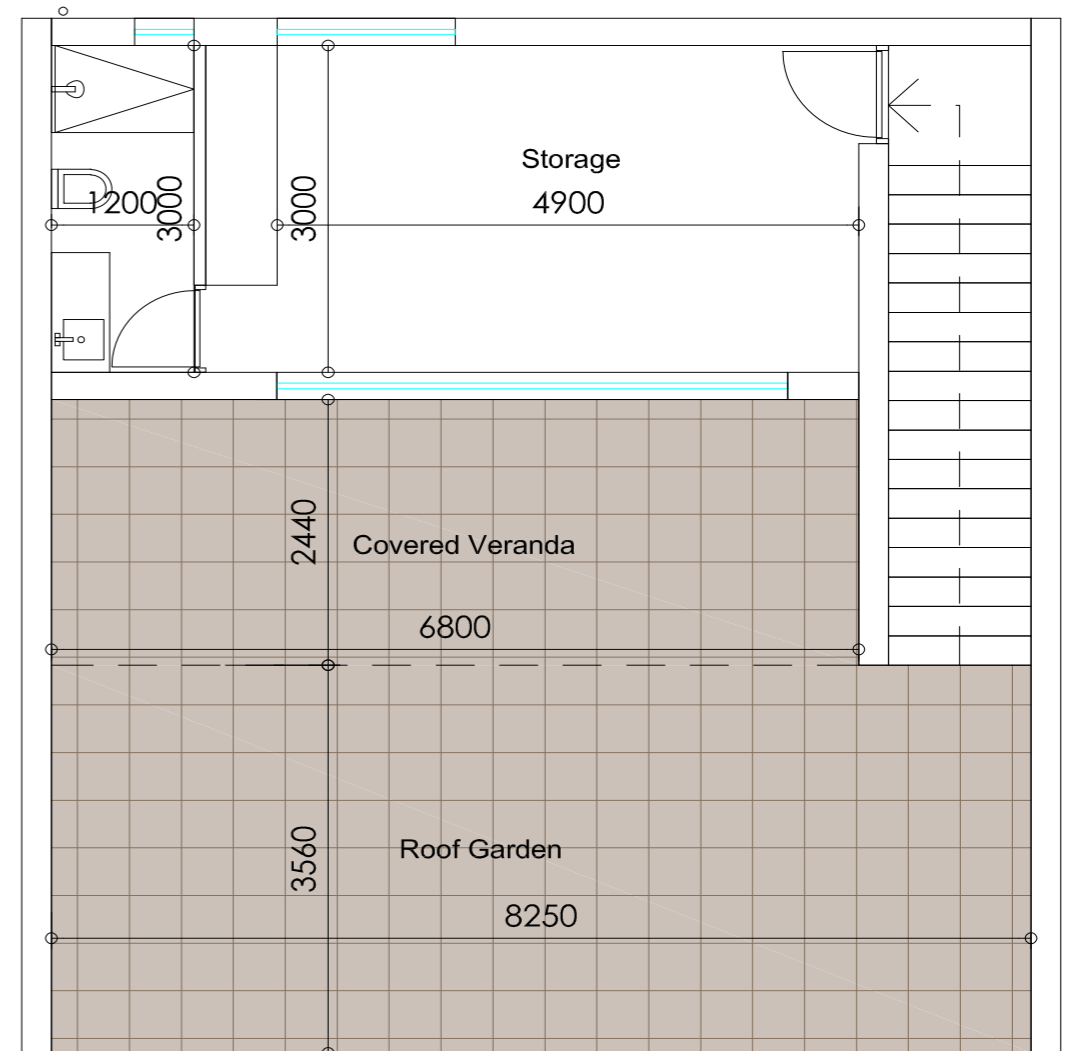
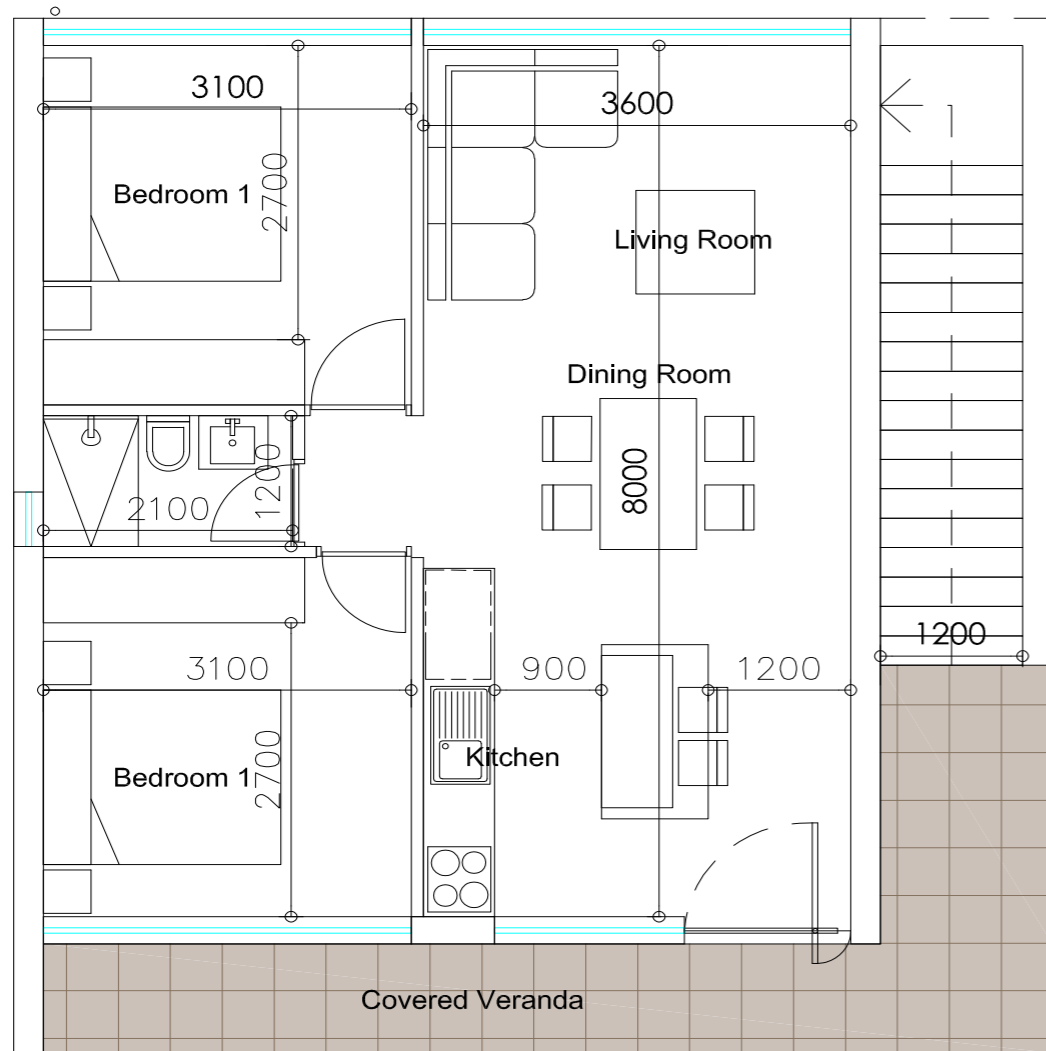
UNITS

No	Floors	Type	Bedrooms	Bathrooms	Covered Internal (sq.m)	Covered Veranda (sq.m.)	Roof Garden (sq.m.)	Uncovered Veranda (sq.m.)	Storage (sq.m)	Parking (uncovered)	Total Covered (sq.m.)	Common Area (sq.m.)	Total Area (sq.m.)	Swimming Pool	Plot Size (sq.m)
No 1	2	House	2	2	85.55	38.25	31.15	0	0.00	1	123.80	0.00	123.80	NO	300
No 2	2	House	2	2	85.55	38.25	31.15	0	0.00	1	123.80	0.00	123.80	NO	300
No 3	2	House	2	2	85.55	38.25	31.15	0	4.00	1	127.80	0.00	127.80	NO	300
No 4	2	House	3	2	122.00	14.25	44.35	0	4.00	1	140.25	0.00	140.25	NO	400
No 5	2	House	3	2	122.00	14.25	44.35	0	0.00	1	136.25	0.00	136.25	NO	400
No 6	2	House	3	2	122.00	14.25	44.35	0	5.00	1	141.25	0.00	141.25	NO	400
No 7	2	House	3	2	122.00	14.25	44.35	0	6.00	1	142.25	0.00	142.25	NO	400
No 8	2	House	3	2	127.00	14.60	46.15	0	0.00	1	141.60	0.00	141.60	NO	550

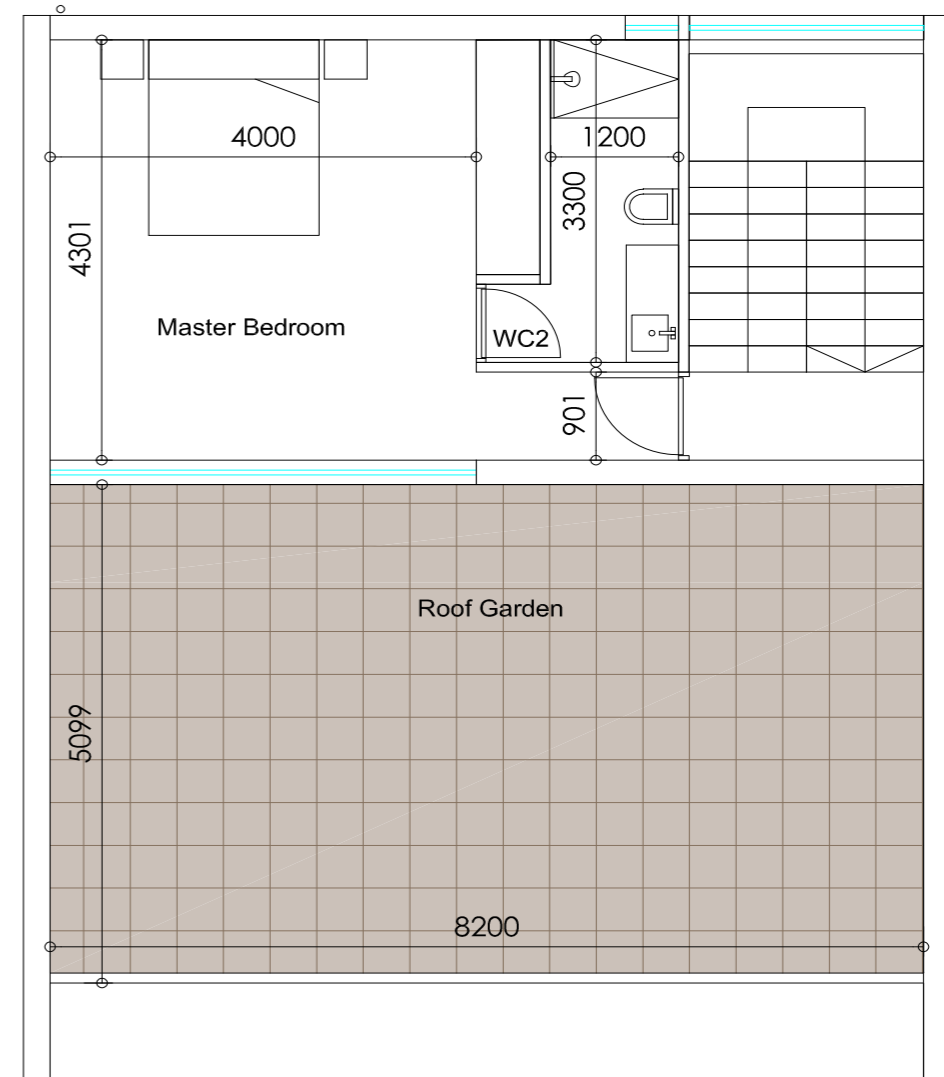
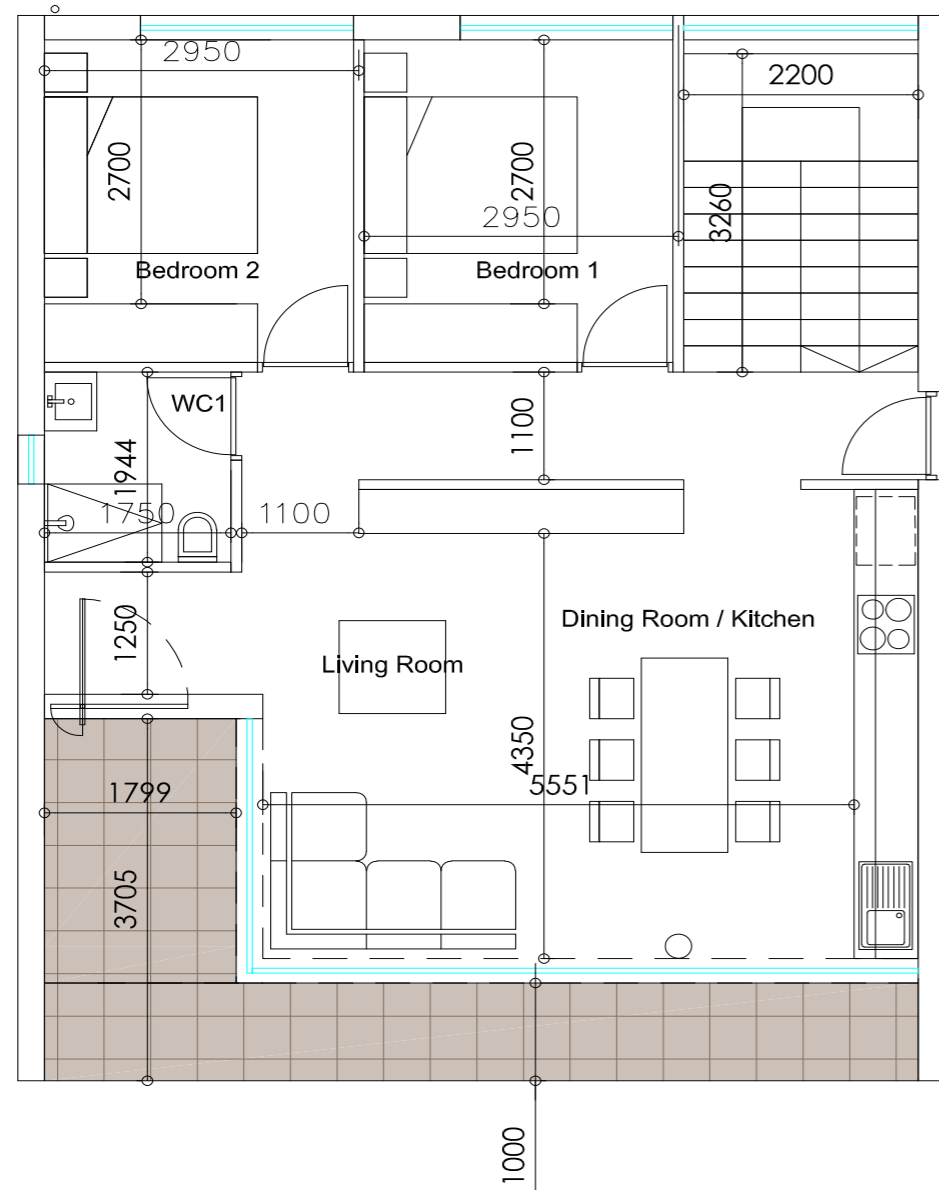
MASTER PLAN



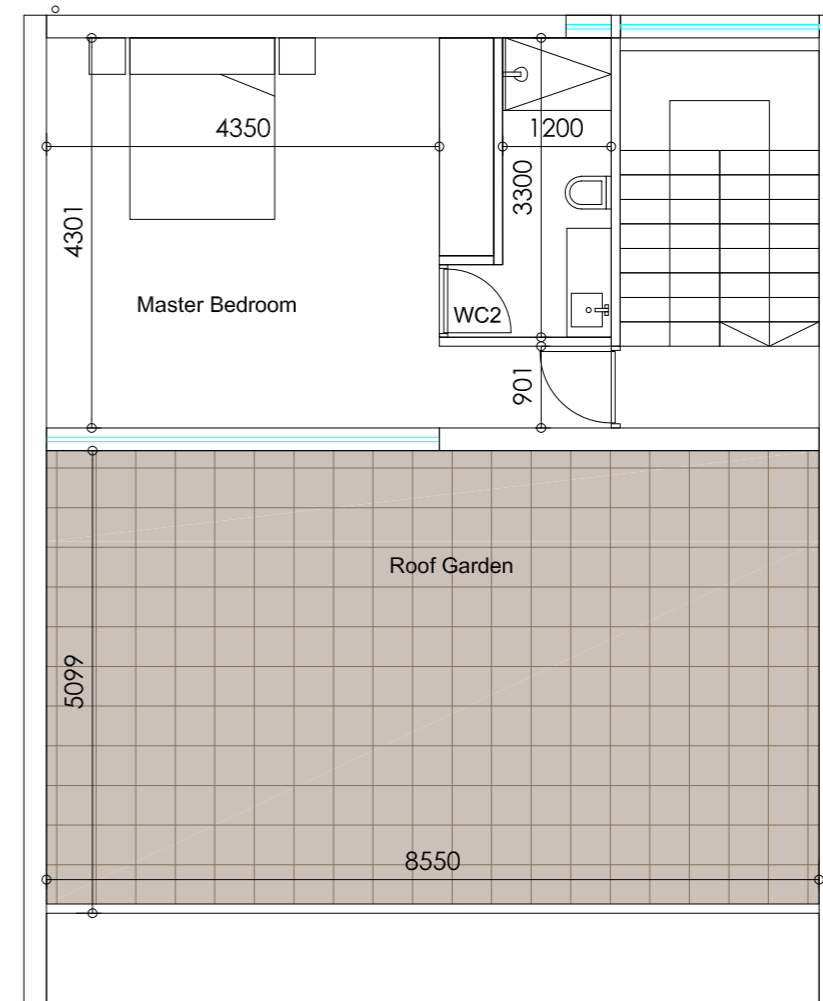
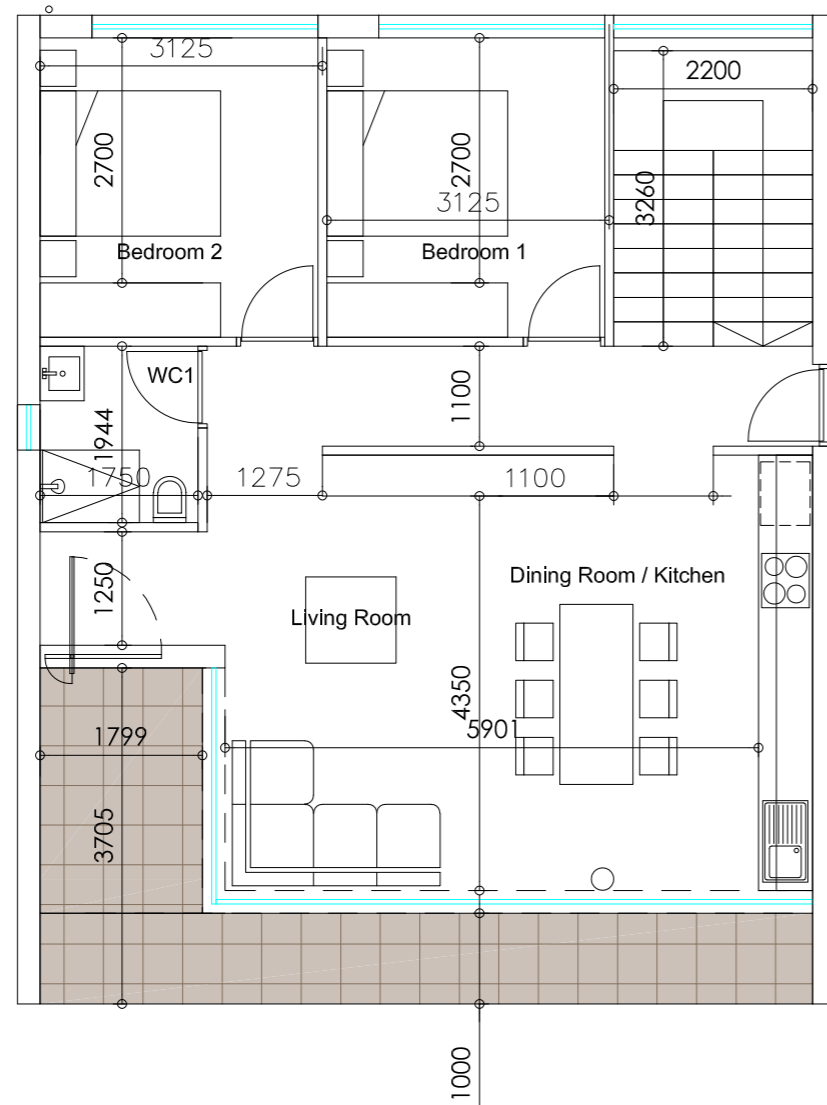
HOUSE 1 - 3



HOUSE 4 - 7



HOUSE 8



KALEIDE

Build your dream

Kaleide Property Group is a real estate development company based in Cyprus with an impressive portfolio of ground-breaking projects.

Through its **SMART** property package, Kaleide offers affordable elegance accessible for family living or for long-term investment while through its **SELECT** package, it boasts a selection of properties, addressed to the high-end buyer.

With a focus on the transparency of the procedure, Kaleide offers premium residential and commercial properties for discerning clients. We work openly and with transparency with all our partners, promoting an inclusive and diverse brand strategy and aim to promote better living for all through sustainable and smart projects with a flair for high aesthetics.

Our team's combined experience enables us to be local experts with global industry knowledge, transforming Cyprus's property market and creating a new approach for real estate.





AFFORDABLE ELEGANCE





PREMIUM ELEGANCE

CONTACTS

 www.kaleidegroup.com

 +357 25 100 688

 info@kaleidegroup.com

 Leoforos Amathountos 2, Sun City Beach Complex
Shop 1-2, 4531, Mouttagiaka Limassol

