

AFFORDABLE ELEGANCE

BLUE COAST

Living at one of Limassol's most upcoming locations is more than great...it is all about absorbing the vibe of one of the most cosmopolitan Mediterranean destinations right next to the city's world-famous harbour. BLUE COAST, an impressive residential project, is defined by its location, the sense of a true and authentic community and the endless potential of constant growth all around it.

CONTENT

BLUE COAST	3
THE PROJECT	4-9
THE DETAILS	10-17
TURNKEY FINISHES	18-21
COMFORT LIVING	22-26
THE LOCATION	27-29
MAP	30-31
PLANS	32-63
KALEIDE	64-65
CONTACT	66





THE PROJECT

Located in Agia Fyla, one of the most sought after areas of Limassol, BLUE COAST combines tranquil living without sacrificing the convenience of a modern family's daily requirements. It is close to all city amenities, three prestigious private schools, and two top-notch hospitals, making it great for families of any size. BLUE COAST is a large community with a total land area of 2300 square meters, comprising two buildings with 24 apartments in total, offering one-bedroom, two-bedroom, and three-bedroom apartment options.



THE DETAILS

24 apartments

3 units per floor

1-bedroom, 2-bedroom, and 3-bedroom apartments

Safe gated complex

Common green areas

Common swimming pool

Children's playground













TURNKEY FINISHES

- High-quality tiles
- High-quality european laminate floors
- High-quality non-slip tiles for bathrooms
- Double-layer aluminum insulation glass windows
- European made security entry door
- Provision for split air conditioner
- European brand sanitary ware
- Eu standard high quality kitchen cabinets and wardrobes
- Countertops in synthetic granite
- High-rise design (2.90-3.20m)





As a family home or a long term investment, Soho's modern approach to city living makes it one of the most exciting living addresses in Limassol

COMFORT LIVING

BLUE COAST is the new trend in urban real estate. Apartments that offers the sea view in an affordable package. The way how the overall project and its apartments have been designed successfully replaces any other options in the market. With a minimal architectural design that defines the entire development, with practical interiors, and with an excellent proximity to the sea, this is the ideal place for family living or for real investment opportunities.



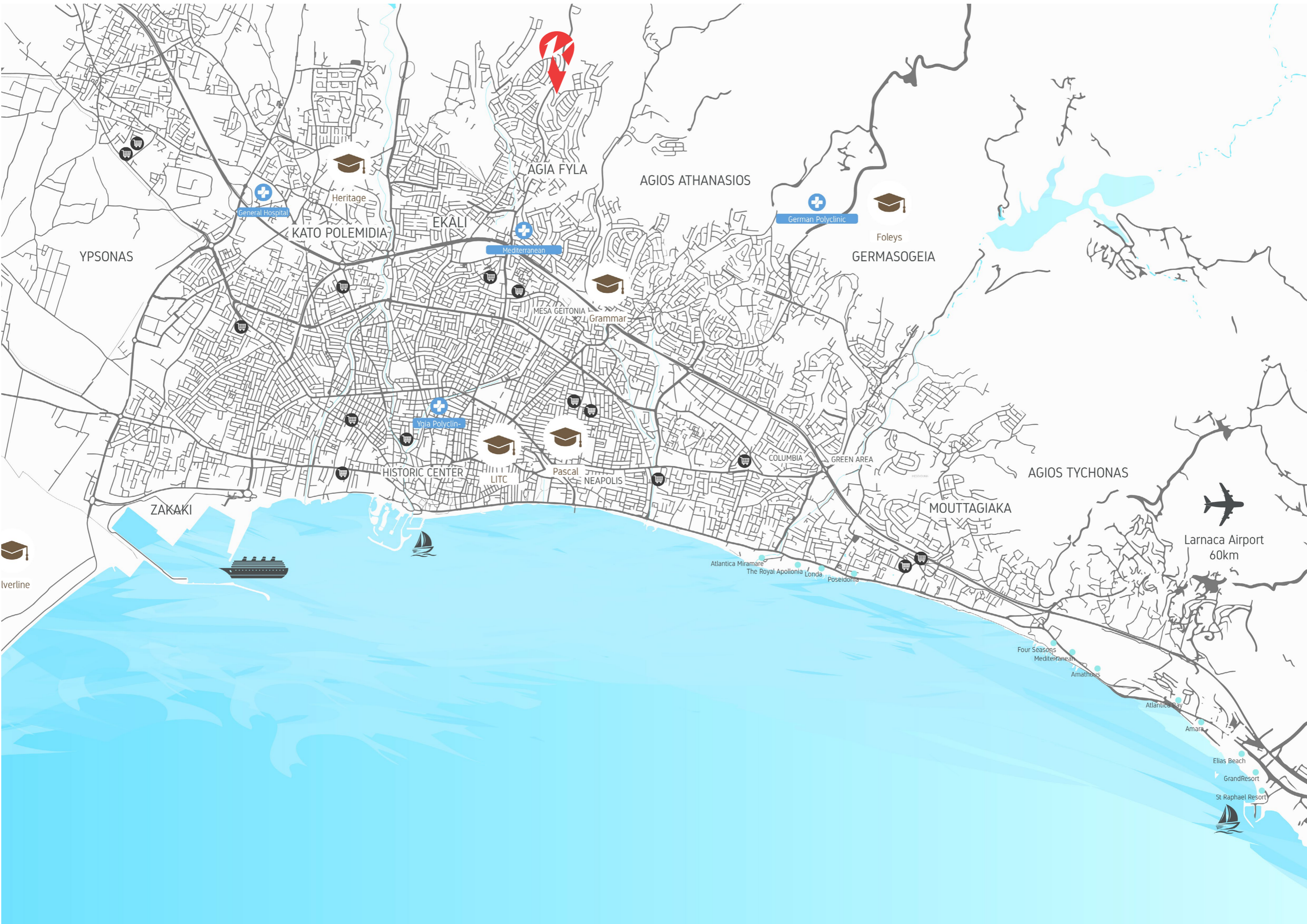
A great option for permanent residence, recreation and real estate investment.

THE LOCATION

Agia Fyla has been one of the most sought after locations in Limassol and has experienced a big growth the last years especially by families that were searching for a quiet living without having to sacrifice convenience, good access to the city's amenities but also to their jobs. It is a 3-minute drive from Grammar School; a 2-minute drive from Mediterranean Hospital which is the best private hospital in Limassol; a 9-minute drive from Foley's School, which is ranked No. 1 in Cyprus, and a German medical center with first-class medical resources. Heritage School is 10 minutes away by car. From Alpha Mega and other large supermarkets are 5 minutes away by car. A 12-minute drive to the beach, the ancient city center, the promenade and the Limassol Marina.

LOCATION BENEFITS

- Fine location
- Developed infrastructure
- Contemporary accommodation
- High investment value
- Instant proximity to the city centre



AGIA FYLA

AGIOS ATHANASIOS

German Polyclinic



Foleys

GERMASOGEIA



General Hospital



Heritage

KATO POLEMIDIA

EKALI



Mediterranean

MESA GEITONIA

Grammar



Ygia Polyclinic

HISTORIC CENTER



Pascal

NEAPOLIS

COLUMBIA

GREEN AREA

AGIOS TYCHONAS

MOUTTAGIACA

ZAKAKI

Larnaca Airport
60km



Atlantica Miramare

The Royal Apollonia

Londa

Poseidonia

Four Seasons

Mediterranean

Amathous

Atlantica Bay

Amara

Elias Beach

GrandResort

St Raphael Resort

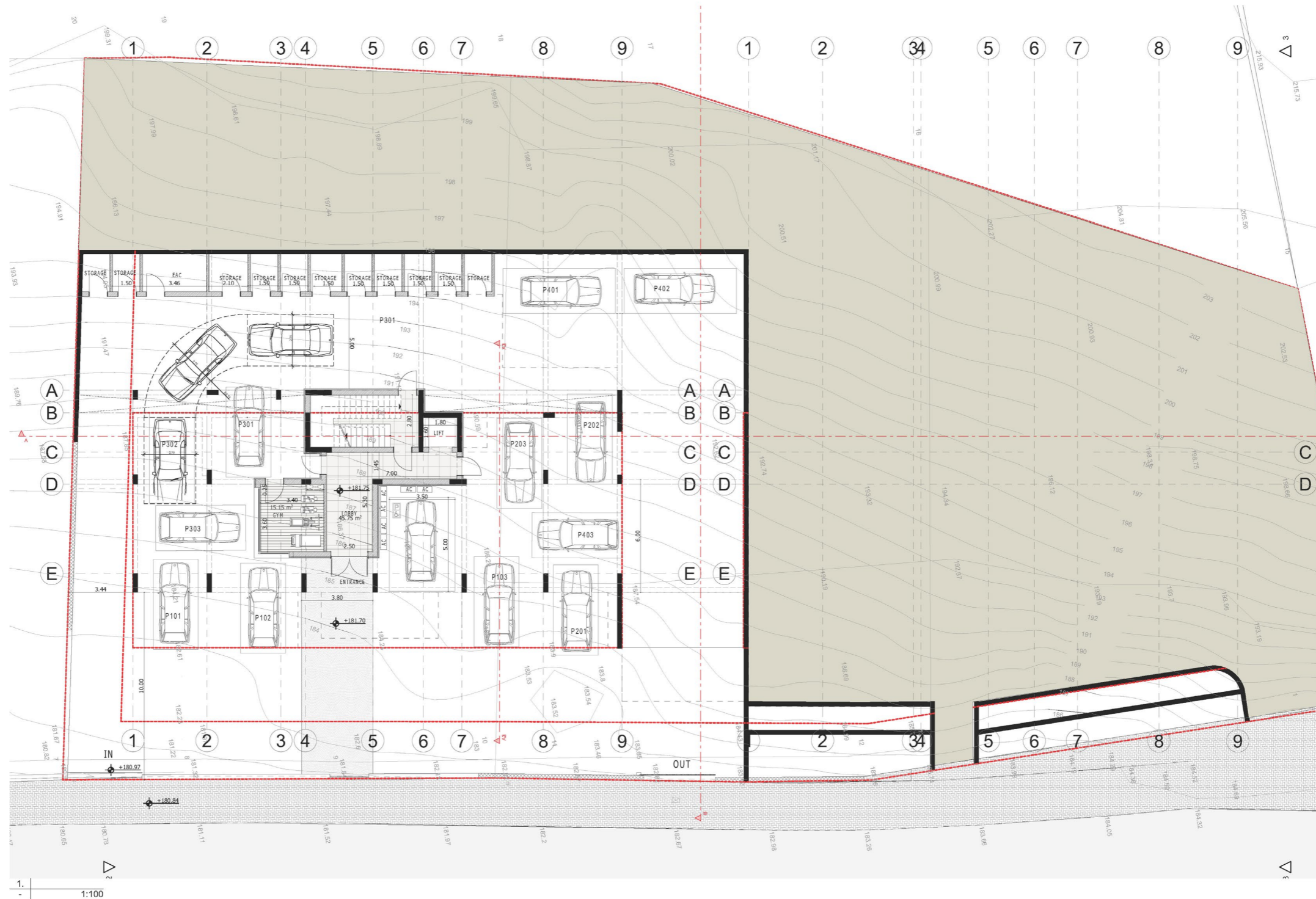


Overline

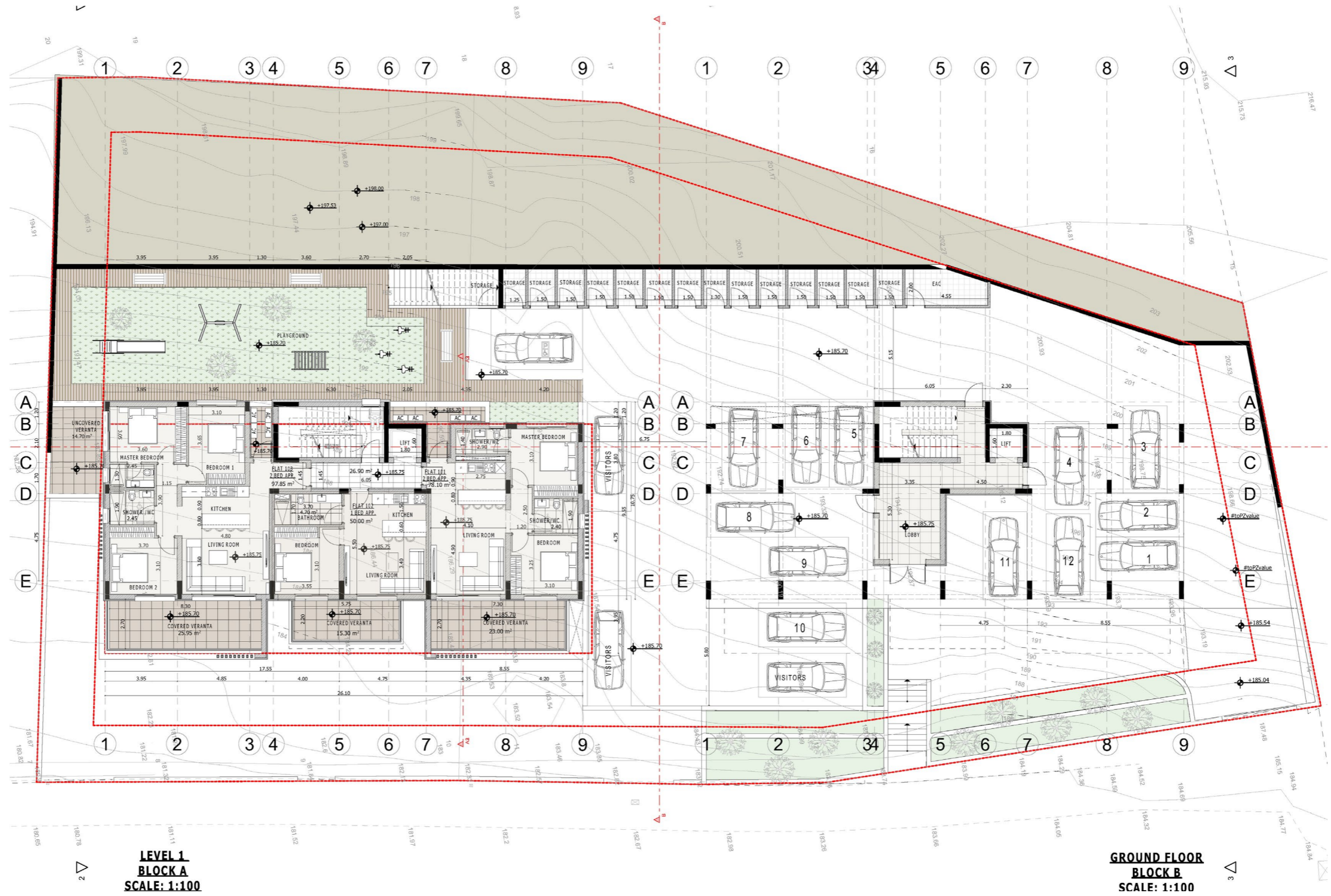
UNITS

No	Type	Bedrooms	bathrooms	Storage m2	PARKING SPACES	Covered Internal (sq.m.)	Covered Verandas (sq.m.)	Uncovered Verandas (sq.m.)	Total Covered (sq.m.)	Common Area (sq.m.)
BLOCK A										
101	Apartme nt	2	2	1.5	15	78.1	23	0	101.1	8.97
102	Apartme nt	1	1	1.5	15	50	15.3	0	65.3	8.97
103	Apartme nt	2	2	1.5	15	97.85	25.95	14.7	123.8	8.97
201	Apartme nt	2	2	1.5	15	78.1	23	0	101.1	8.97
202	Apartme nt	1	1	1.5	15	50	15.3	0	65.3	8.97
203	Apartme nt	2	2	1.5	15	97.85	25.95	0	123.8	8.97
301	Apartme nt	2	2	1.5	15	78.1	23	0	101.1	8.97
302	Apartme nt	1	1	1.5	15	50	15.3	0	65.3	8.97
303	Apartme nt	2	2	1.5	15	97.85	25.95	0	123.8	8.97
401	Apartme nt	2	2	1.5	15	78.1	23	0	101.1	4.22
402	Apartme nt	1	1	1.5	15	50	15.3	0	65.3	4.22
403	Apartme nt	2	2	1.5	15	97.85	25.95	0	123.8	4.22
BLOCK B										
101	Apartme nt	2	2	1.5	15	78.1	23	118.8	101.1	9.27
102	Apartme nt	1	1	1.5	15	50.15	14.1	0	64.25	9.27
103	Apartme nt	2	2	1.5	15	83.45	23	121.85	106.45	9.27
201	Apartme nt	2	2	1.5	15	78.1	23	0	101.1	9.27
202	Apartme nt	1	1	1.5	15	50.15	14.1	0	64.25	9.27
203	Apartme nt	2	2	1.5	15	83.65	23	0	106.65	9.27
301	Apartme nt	2	2	1.5	15	78.1	23	0	101.1	9.27
302	Apartme nt	1	1	1.5	15	50.15	14.1	0	64.25	9.27
303	Apartme nt	2	2	1.5	15	83.65	23	0	106.65	9.27
401	Apartme nt	2	2	1.5	15	78.1	23	0	101.1	4.42
402	Apartme nt	1	1	1.5	15	50.15	14.1	0	64.25	4.42
403	Apartme nt	2	2	1.5	15	83.65	23	0	106.65	4.42

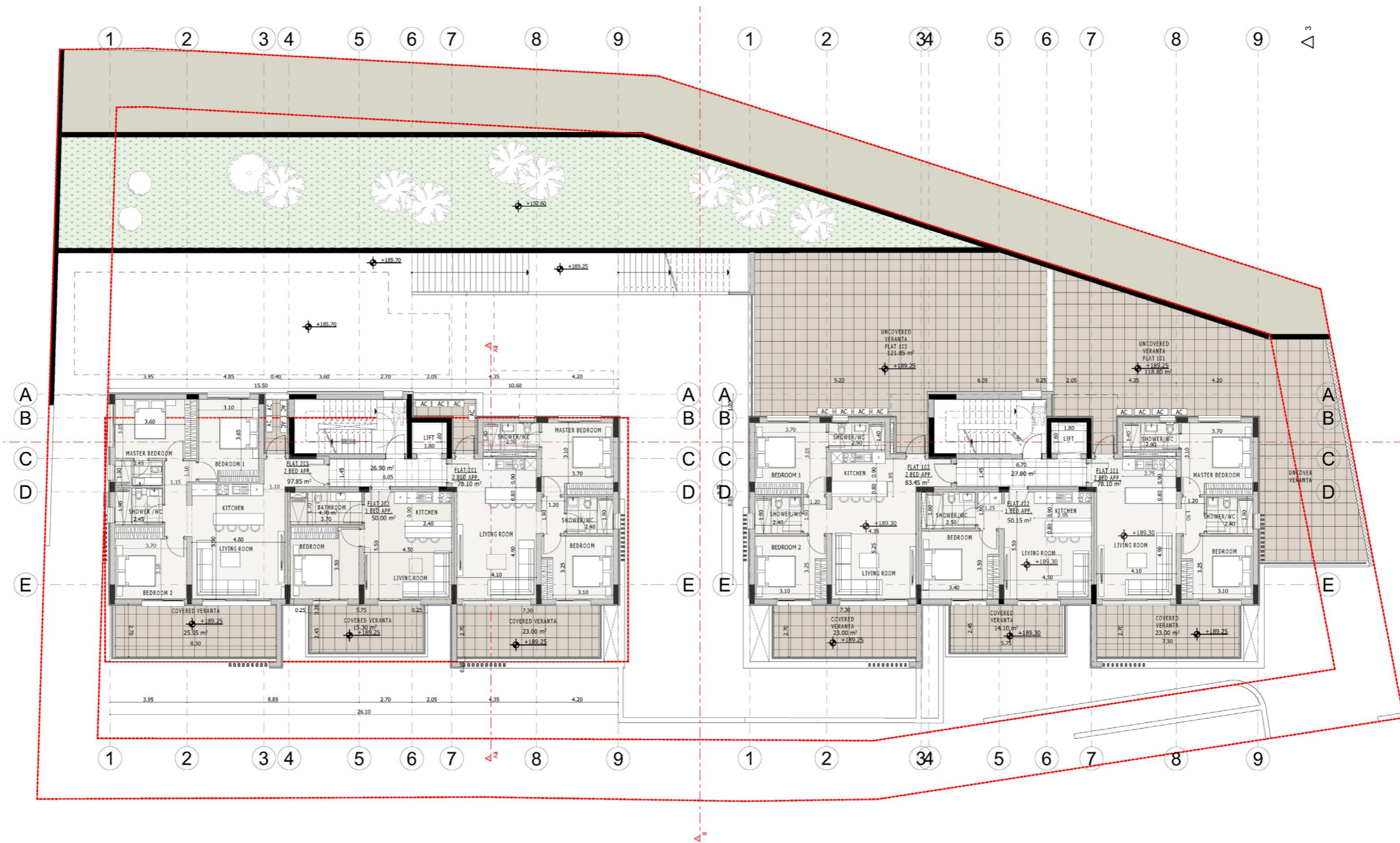
GROUND FLOOR



FIRST FLOOR



SECOND FLOOR

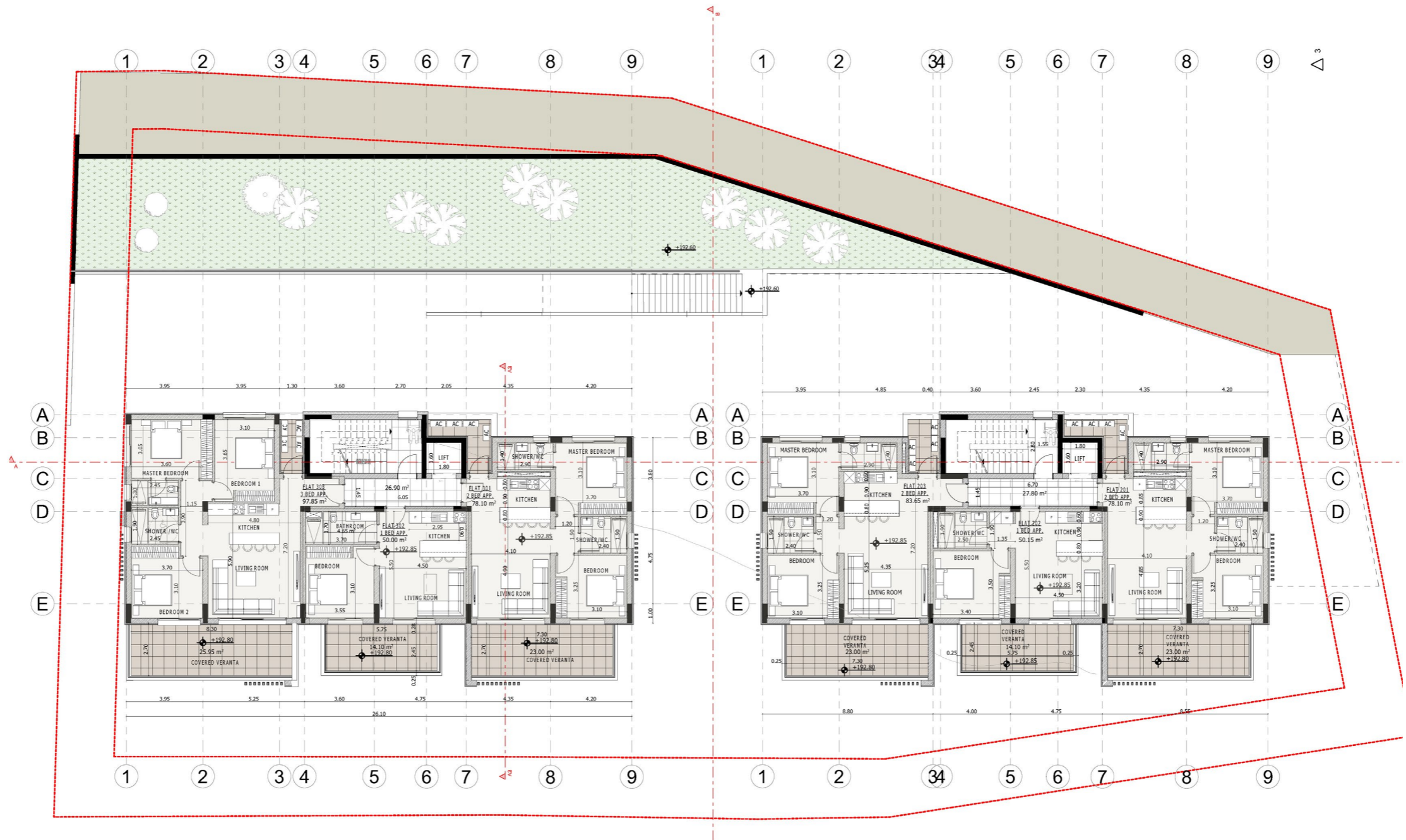


1. 1:100

**LEVEL 2
BLOCK A
SCALE: 1:100**

**LEVEL 1
BLOCK B
SCALE: 1:100**

THIRD FLOOR



**LEVEL 3
BLOCK A
SCALE: 1:100**

**LEVEL 2
BLOCK B
SCALE: 1:100**

FIFTH FLOOR

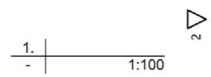


1: 1:100

**LEVEL 4
BLOCK A
SCALE: 1:100**

**LEVEL 3
BLOCK B
SCALE: 1:100**

SIXTH FLOOR

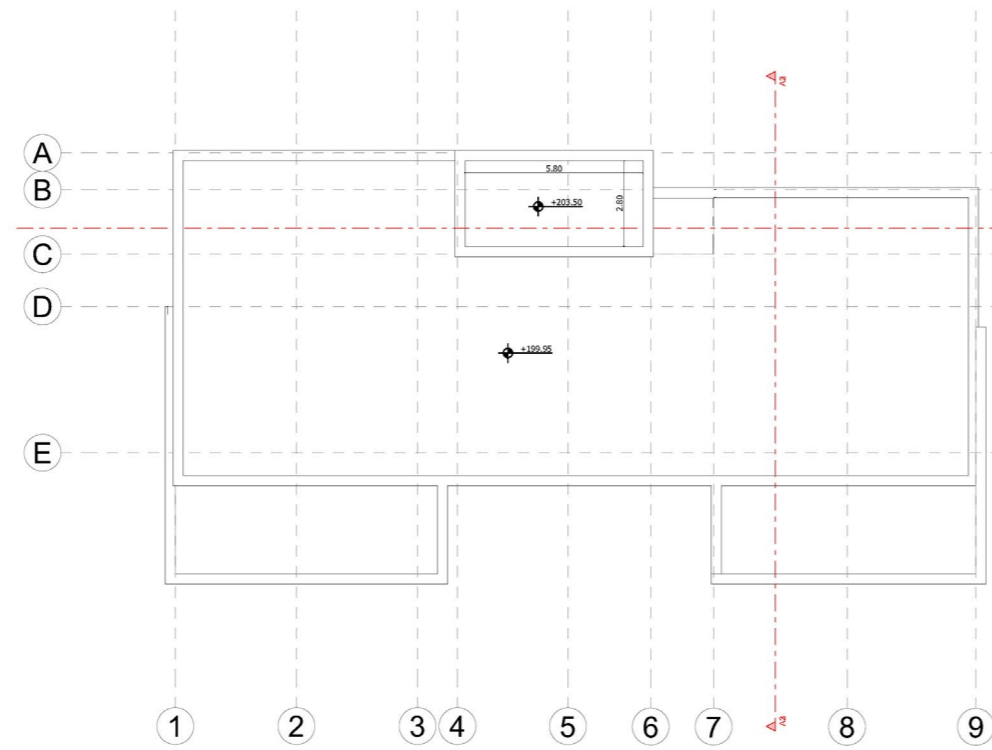


**ROOF LEVEL
BLOCK A
SCALE: 1:100**



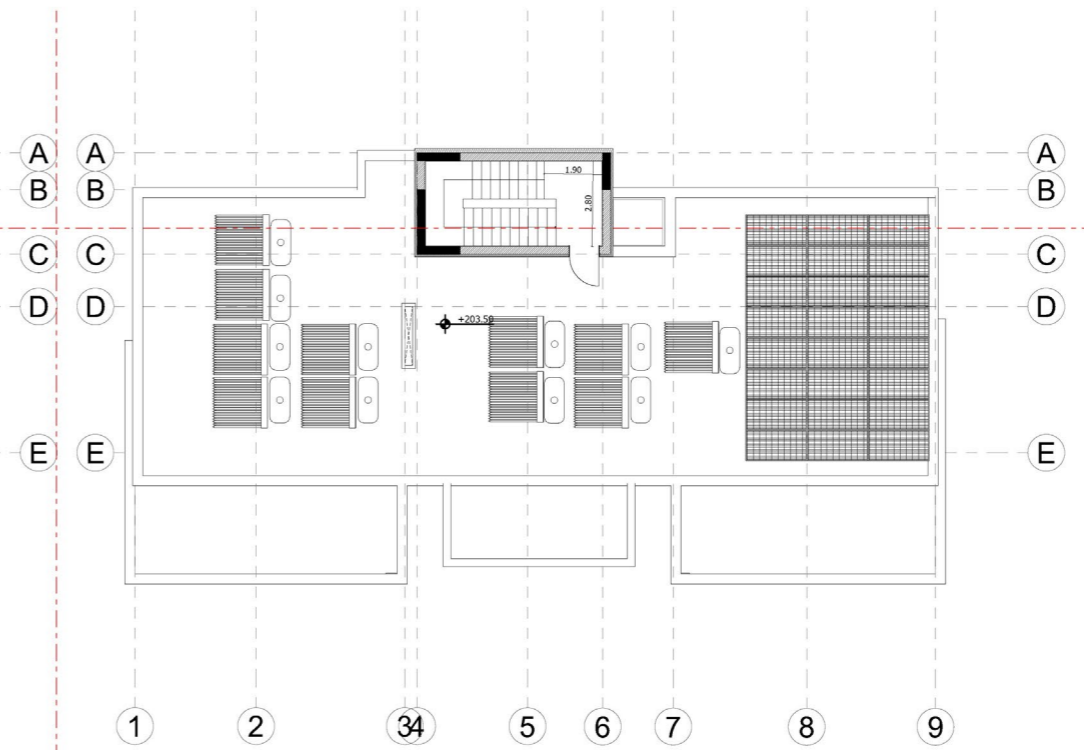
**LEVEL 4
BLOCK B
SCALE: 1:100**

ROOF TOP

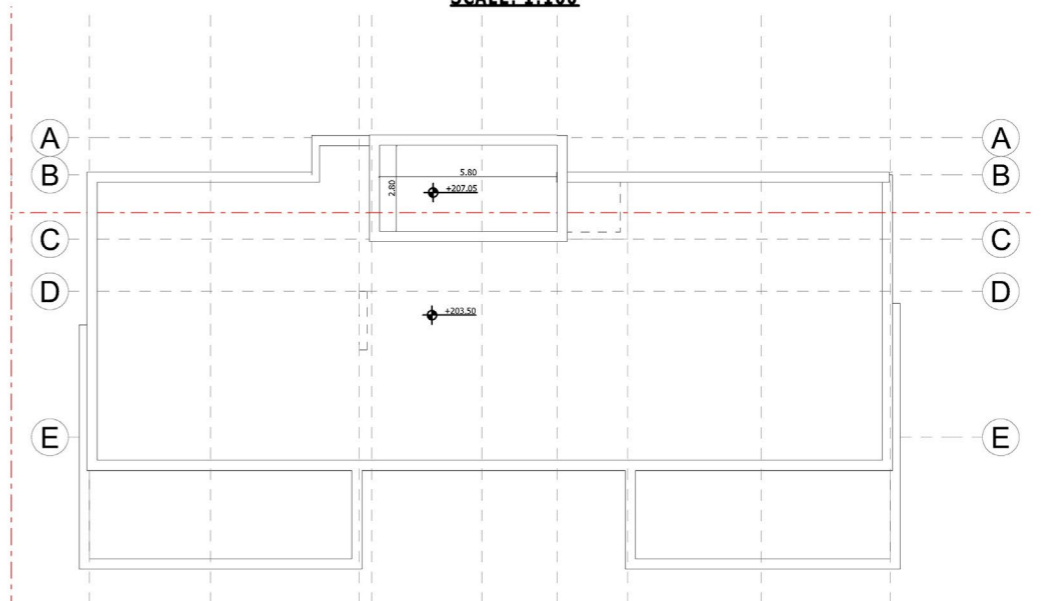


1:100

**TOP ROOF LEVEL
BLOCK A
SCALE: 1:100**



**ROOF LEVEL
BLOCK B
SCALE: 1:100**



KALEIDE

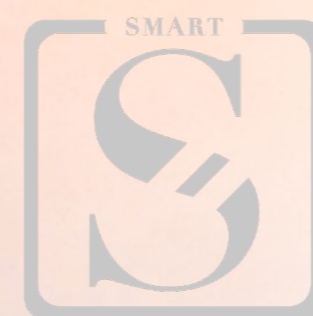
Build your dream

Kaleide Property Group is a real estate development company based in Cyprus with an impressive portfolio of ground-breaking projects.

Through its **SMART** property package, Kaleide offers affordable elegance accessible for family living or for long-term investment while through its **SELECT** package, it boasts a selection of properties, addressed to the high-end buyer.

With a focus on the transparency of the procedure, Kaleide offers premium residential and commercial properties for discerning clients. We work openly and with transparency with all our partners, promoting an inclusive and diverse brand strategy and aim to promote better living for all through sustainable and smart projects with a flair for high aesthetics.

Our team's combined experience enables us to be local experts with global industry knowledge, transforming Cyprus's property market and creating a new approach for real estate.




AFFORDABLE ELEGANCE




PREMIUM ELEGANCE

CONTACTS

 www.kaleidegroup.com

 +357 25 100 688

 info@kaleidegroup.com

 Leoforos Amathountos 2, Sun City Beach Complex
Shop 1-2, 4531, Mouttagiaka Limassol

