



# AZURE RESIDENCE

# CONTENTS.

---

AZURE RESIDENCE	3
PROJECT INTRODUCTION	4-9
PROJECT OVERVIEW	10-11
DELIVERY SPECIFICATIONS	12-21
GEOGRAPHICAL LOCATION	22-23
ARCHITECTURAL DESIGN	24-35

# AZURE RESIDENCE

---

Symbolizing the Mediterranean lifestyle and allowing you to enjoy all the advantages of this new neighborhood in Limassol. In the years to come, AZURE Residence will always be by your side.

The apartments offer stunning views — from your room, you can enjoy the sunrise over the sea and the stars that light up the city at night. Luxurious apartments with sea and city views, built between the mountains and the sea, featuring full amenities and located in a well-developed community that has it all.





## PROJECT INTRODUCTION

---

The residential project AZURE RESIDENCE is located in the Agios Athanasios area of Limassol. The project consists of six apartments, each offering unparalleled views of the city and the sea.

The area provides comfortable and convenient living, with a wide range of options for restaurants, shopping, and entertainment, fully meeting the needs of the residents. By choosing AZURE RESIDENCE, you will enjoy all the advantages of this location in Limassol and the relaxed Mediterranean lifestyle.

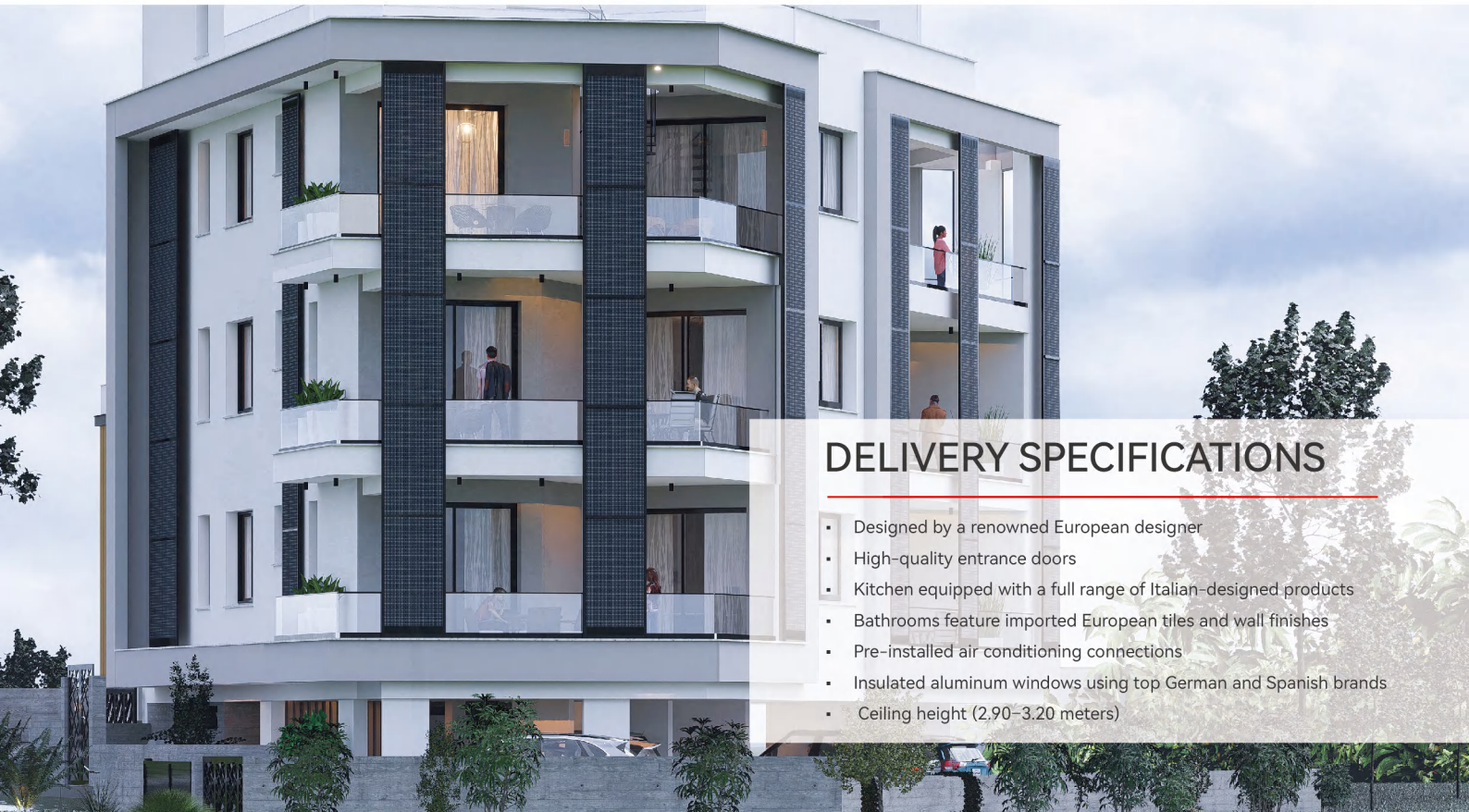
## PROJECT OVERVIEW

---

- Consists of a total of 6 apartments
- Each apartment features a two-bedroom design and includes a parking space
- High-quality delivery standards







## DELIVERY SPECIFICATIONS

- Designed by a renowned European designer
- High-quality entrance doors
- Kitchen equipped with a full range of Italian-designed products
- Bathrooms feature imported European tiles and wall finishes
- Pre-installed air conditioning connections
- Insulated aluminum windows using top German and Spanish brands
- Ceiling height (2.90–3.20 meters)























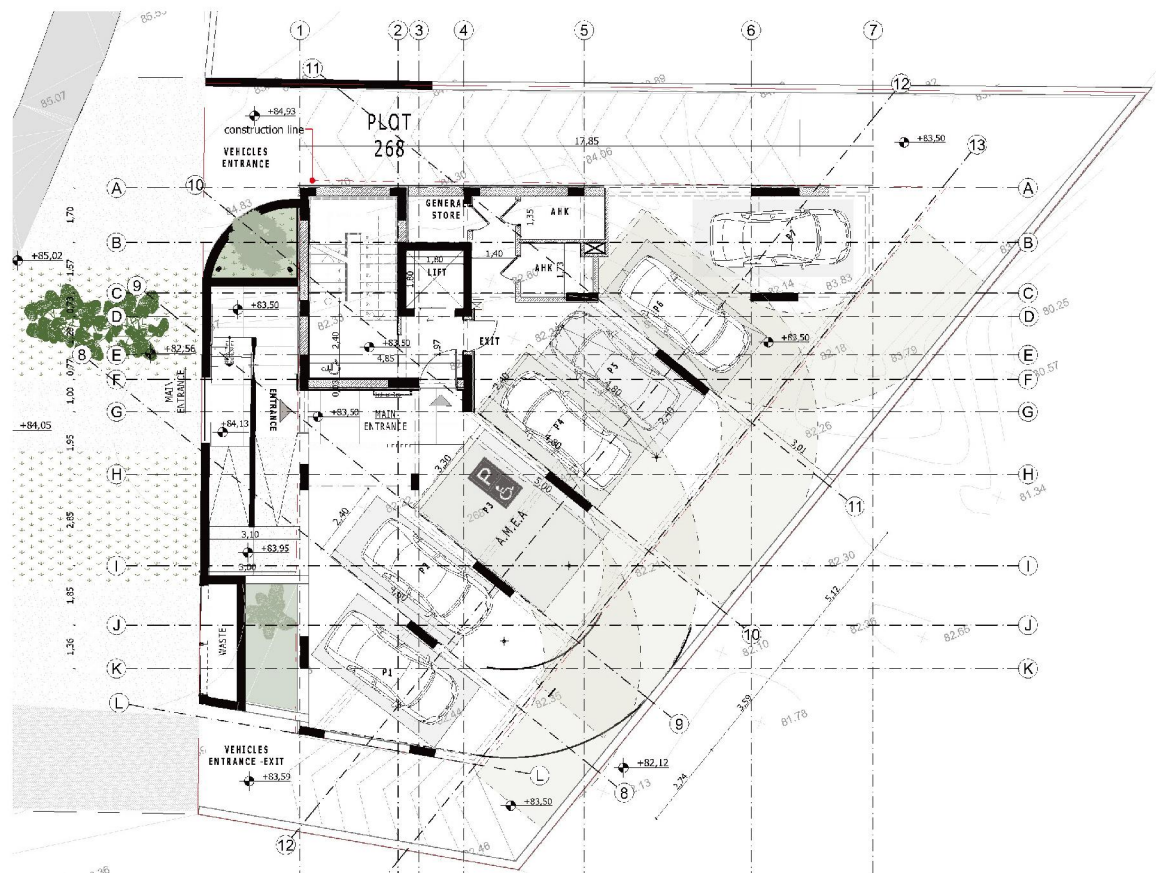
## GEOGRAPHICAL LOCATION

The project is located in one of the most luxurious residential areas of Limassol city. The sea is just a 10-minute drive away. The surrounding area is fully equipped with infrastructure including supermarkets, banks, pharmacies, restaurants, schools, sports fields, hospitals, and community service centers. The apartments are comfortable and elegant, with great investment potential.

# UNITS

No	Type	Bedrooms	Bathrooms	Storage	Parking	Internal Area (m <sup>2</sup> )	Covered Veranda (m <sup>2</sup> )	Uncovered veranda (m <sup>2</sup> )	Total Covered Area (m <sup>2</sup> )
101	Apartment	2	2	1	1	75	21.5	-	96.5
102		2	2	1	1	75	21.4	-	96.4
201		2	2	1	1	75	22.1	-	97.1
202		2	2	1	1	75	21.4	-	96.4
301	Penthouse apartmen	1+1 Office	1	1	1	65	30.65	38.15	95.65
302		1+1 Office	1	1	1	65	16.5	12.2	81.5

# COVERED PARKING

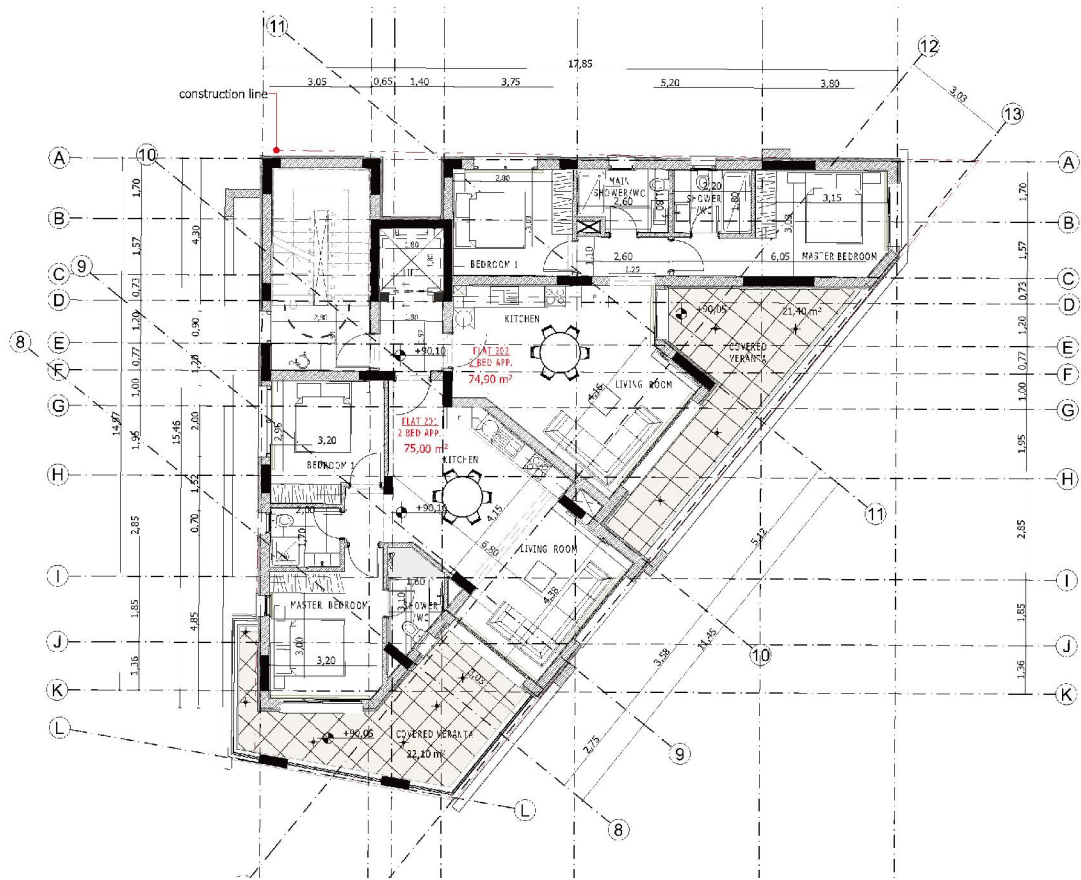


Architectural floor plan of the 1st floor of a building. The plan shows a complex layout with multiple rooms, including bedrooms, a living room, a kitchen, a dining area, a bathroom, and a master bedroom. The plan is overlaid with a grid system (A-L horizontally, 8-13 vertically). Dimensions are provided for various sections and rooms. Key areas include: Flat 101 (2,860 sqm, 74,95 m²), Flat 102 (2,860 sqm, 75,00 m²), and a large covered veranda (21,90 m²). The plan also shows a construction line and a building dimensions section.

1st FI NOR



# SECEND FLOOR



# THIRD FLOOR

