

# HILLSIDE RESIDENCES

LIVING BETWEEN MOUNTAINS AND SEA, A POETIC LIFE.



AFFORDABLE ELEGANCE





# CONTENTS

04

Introduction

06

Advantages

22

Floor Plan

34

Price

36

About kaleide



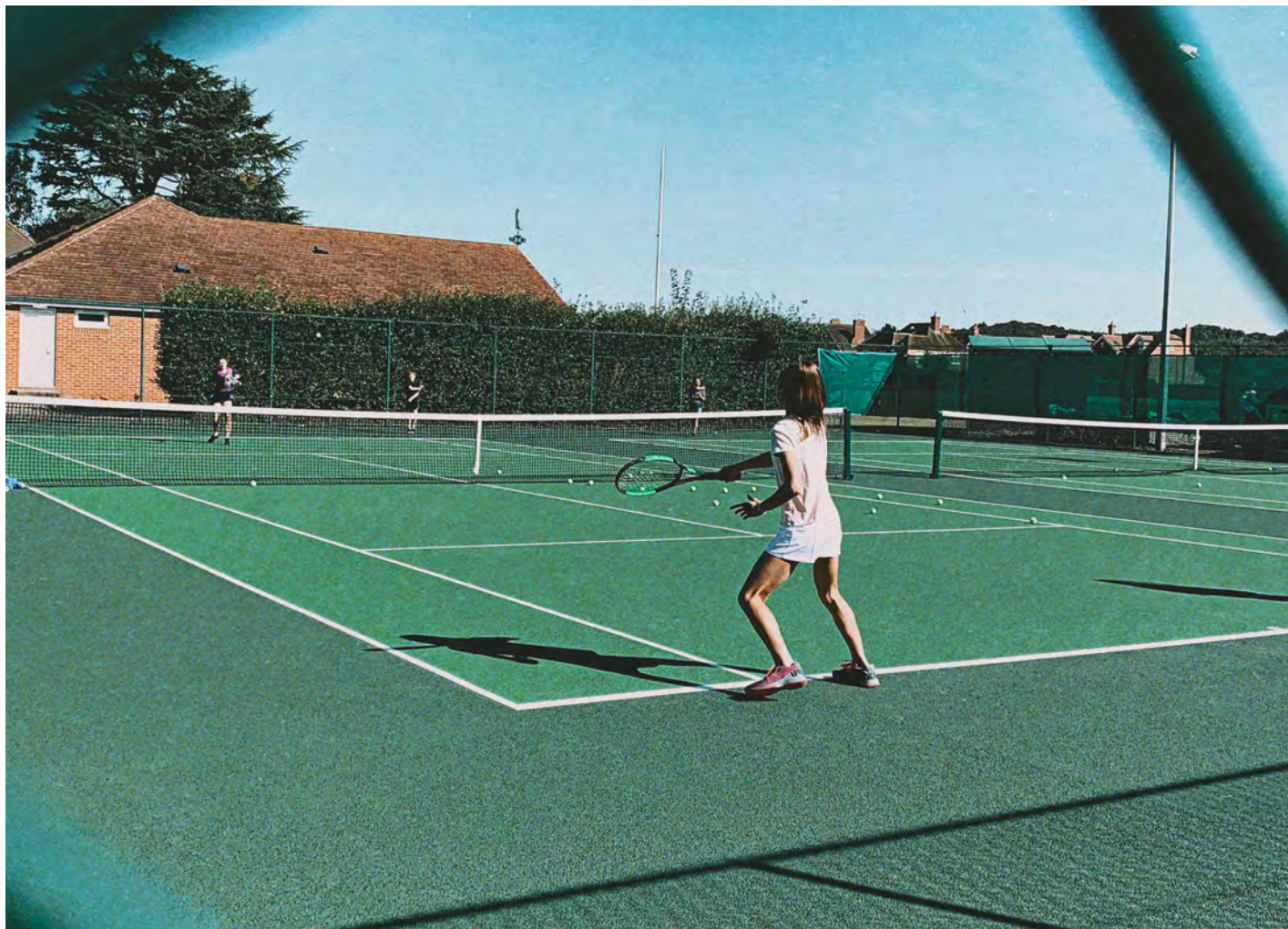


# Kaleide

The HILLSIDE RESIDENCE is located in the area of Agia Fyla, close to both the city center and the sea. The project offers parking spaces, storage rooms, and other facilities. The infrastructure in the surrounding area provides a comfortable and safe living environment.







# AREA FACILITIES

## GOLDEN LIVING CIRCLE



A retreat nestled in the tranquil mountain foothills near the city center, offering a peaceful escape from the hustle and bustle. Within a 3-kilometer “golden living circle” lie the Mediterranean Hospital, a network of international schools (both private and public), a sports complex with tennis and football facilities, and a full range of daily amenities. This semi-mountain development features terraced gardens and a three-dimensional landscaped design.







AGIAFYLA

AGIOSATHANASIOS

Foleys

GERMASOGEIA

AGIOS T

MOUTAGIAKA

# HILLSIDE RESIDENCES

KATO POLEMIDIA

EKALI

MESA GETTONIA

Grammar

COLUMBIA

GREENAERA

HISTORICCENTER

LITC

Pascal

NEAPOLIS

ATLANTICA MIAMARE

TheRoyal Apollonia

Londa Poseidonia

Four Seasons  
Mediterra

Heritage

General Hospital

Mediterranean Hospital

German PolyclinicCenter

Ygia Polyclinic











# 6 LUXURIOUS RESIDENCES



6 exclusive and luxurious private residences, all two-bedroom units, carefully decorated and arranged on a single level, with ground-level parking and a 270° panoramic view.















# DELIVERY STANDARDS



- A minimalist masterpiece by a renowned European designer
- High-quality entrance doors
- Fully equipped with Italian-designed kitchen appliances and bathrooms, featuring European-imported tiles and walls
- Pre-installed air conditioning outlets
- Insulated aluminum windows from top German and Spanish brands

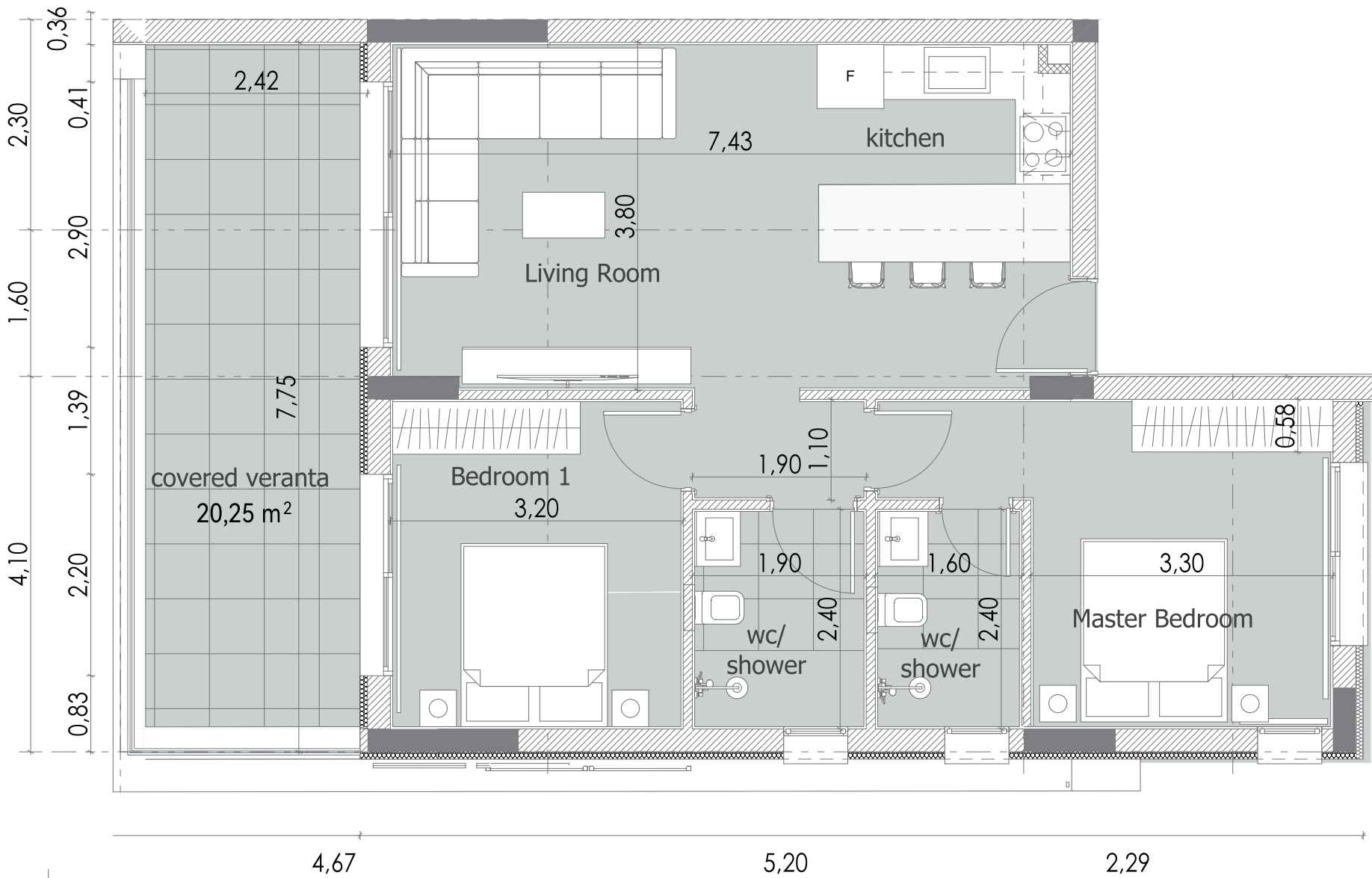
This place is not just a residence but an artistic vessel that embodies the family's taste. When the sunlight from Limassol penetrates the Spanish-imported insulating windows, it flows onto the Italian marble tiles, etching the passage of time. Here, you will redefine the ultimate form of Mediterranean luxury living within the space aesthetics crafted by European designers.



# APARTMENT

101

Covered Internal	75m²
Bath rooms	2
Bed rooms	2
Parking Covered	YES
Covered Veranda	20.25m²
Uncovered Veranda	0
Storeroom	2.8m²

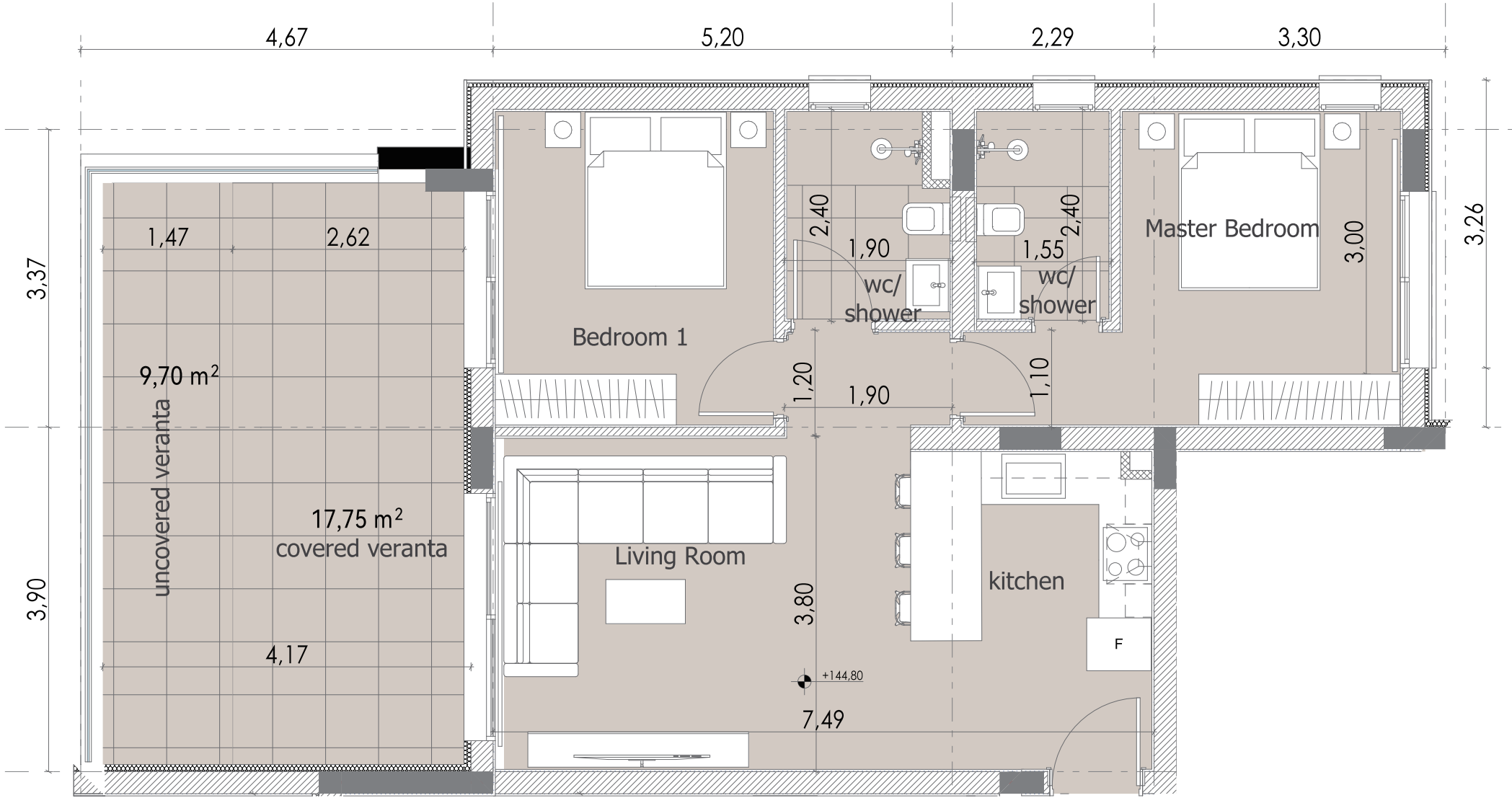




# APARTMENT

## 102

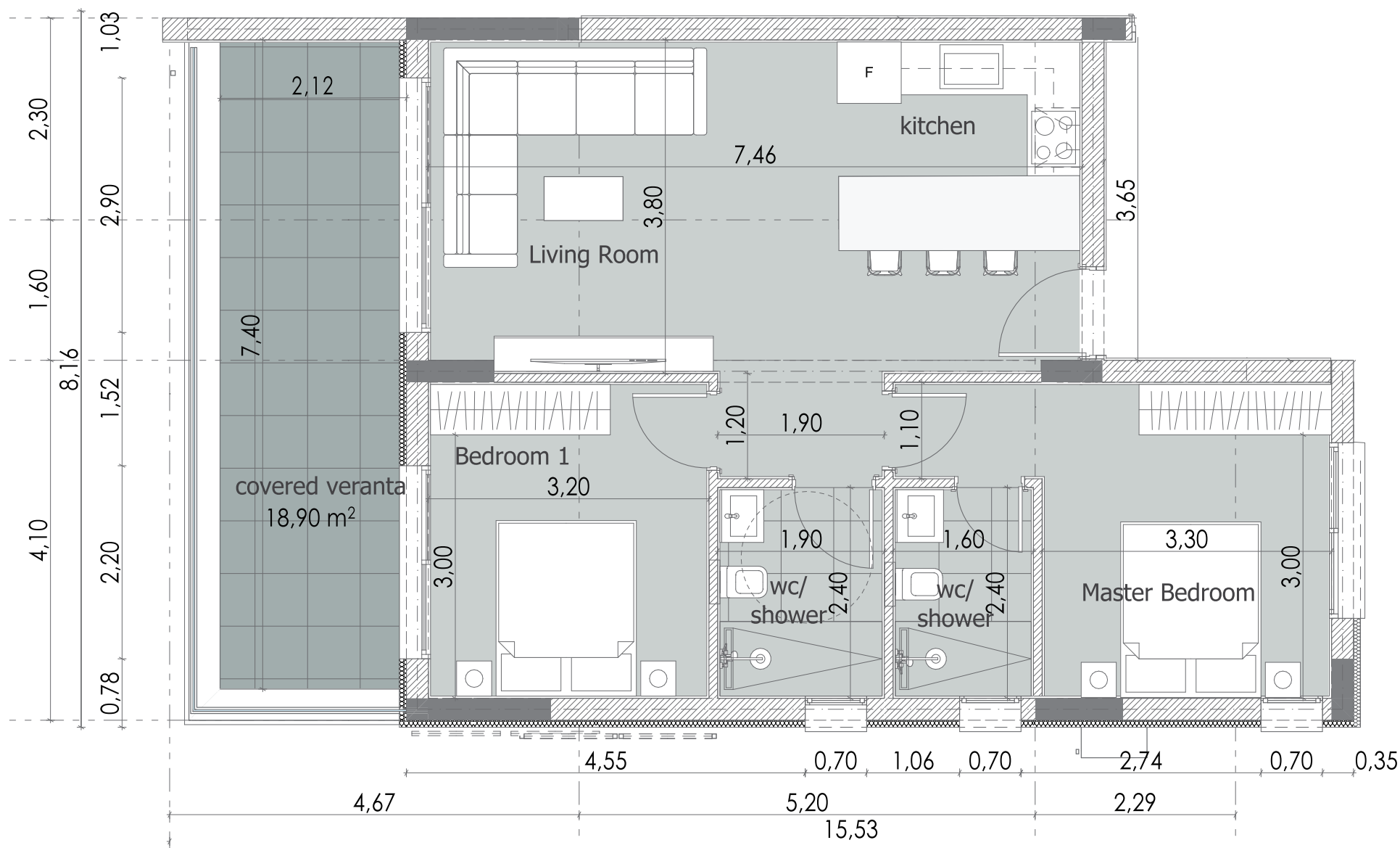
Covered Internal	75m <sup>2</sup>
Bath rooms	2
Bed rooms	2
Parking Covered	YES
Covered Veranda	17.75 m <sup>2</sup>
Uncovered Veranda	9.70 m <sup>2</sup>
Storeroom	2.8 m <sup>2</sup>





# APARTMENT

## 201



Covered Internal	75m <sup>2</sup>
Bath rooms	2
Bed rooms	2
Parking Covered	YES
Covered Veranda	18.90 m <sup>2</sup>
Uncovered Veranda	0
Storeroom	2.8 m <sup>2</sup>

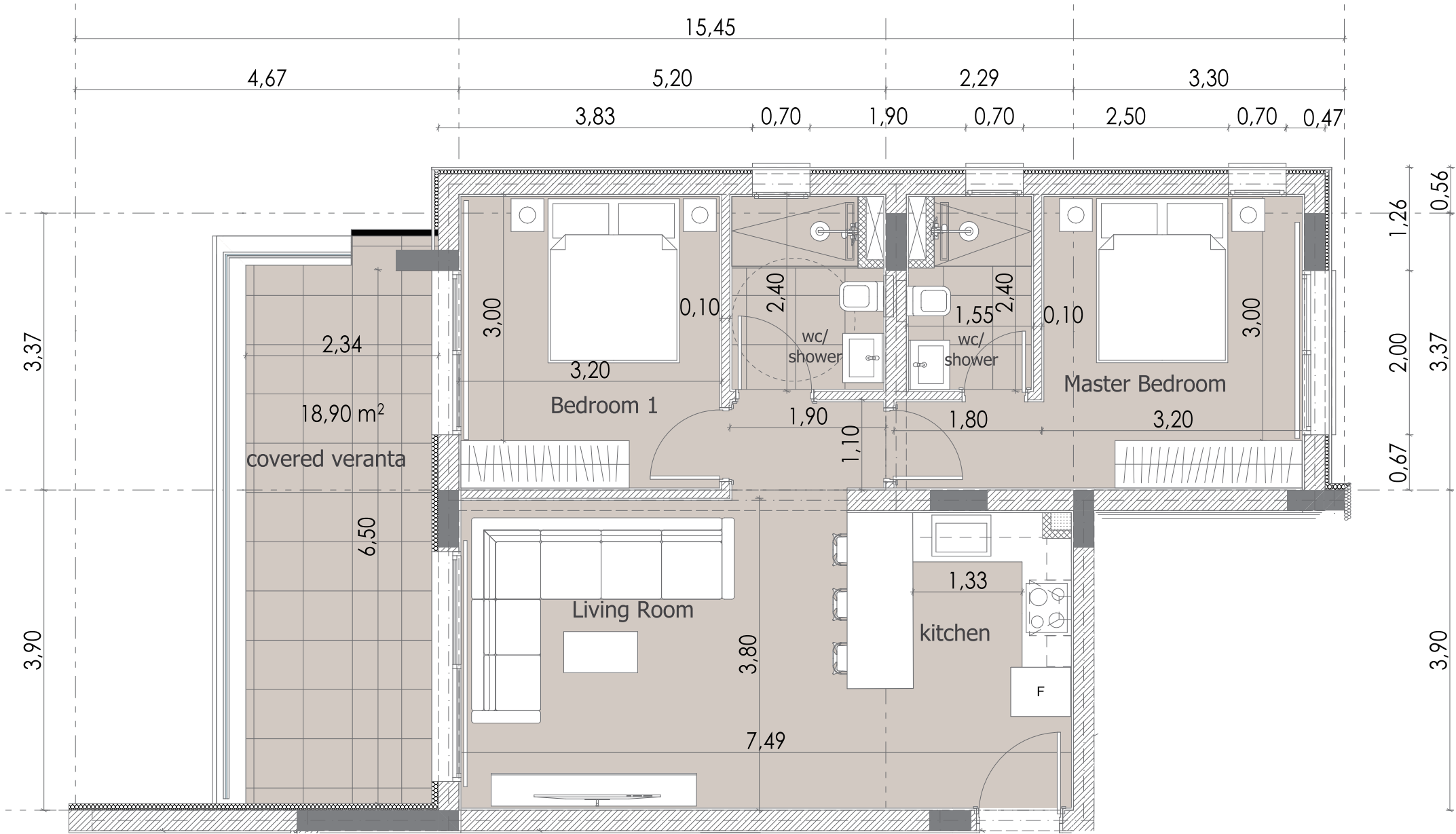




# APARTMENT

## 202

Covered Internal	75m <sup>2</sup>
Bath rooms	2
Bed rooms	2
Parking Covered	YES
Covered Veranda	18.9 m <sup>2</sup>
Uncovered Veranda	0
Storeroom	2.8m <sup>2</sup>

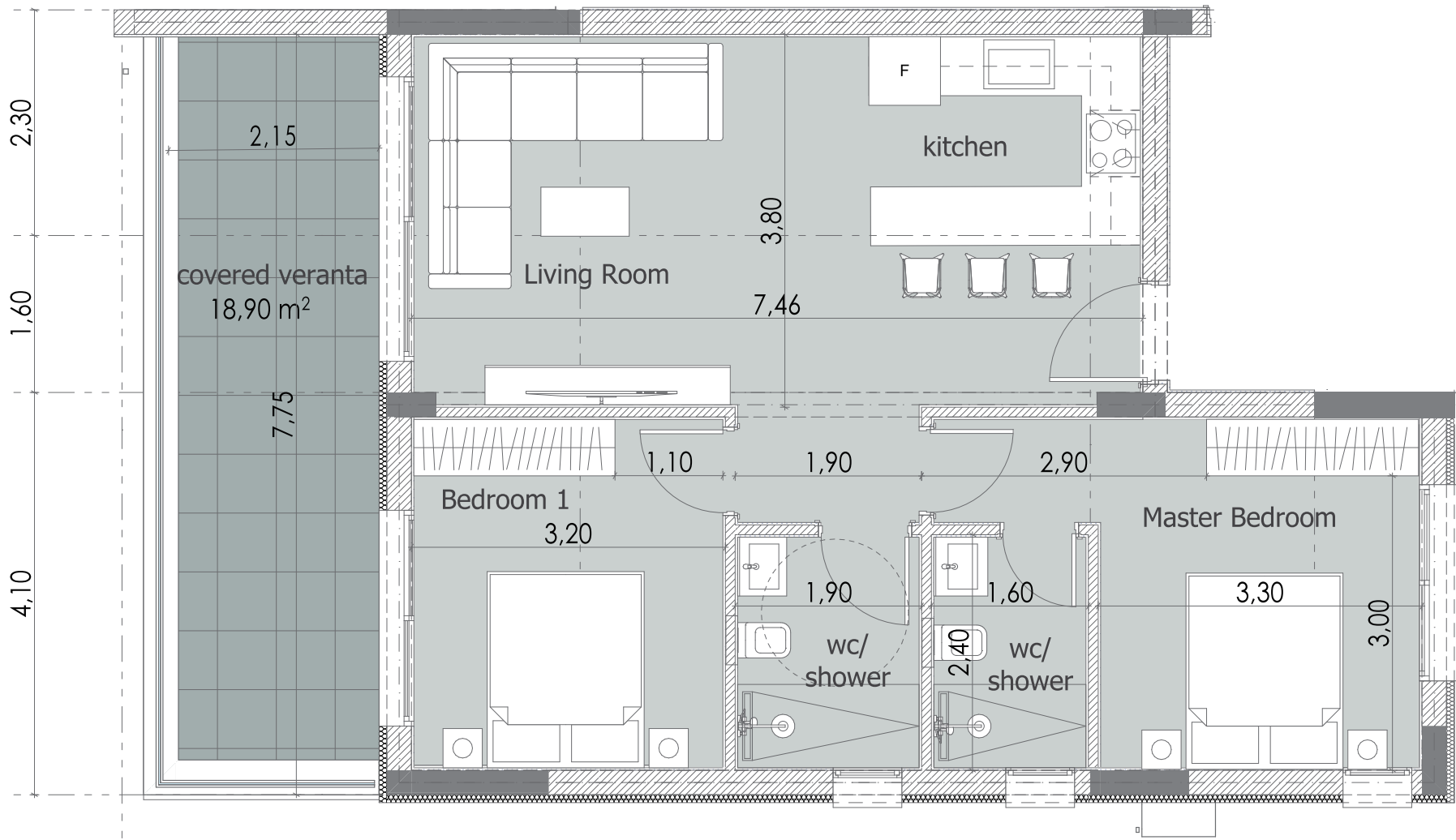




# APARTMENT

301

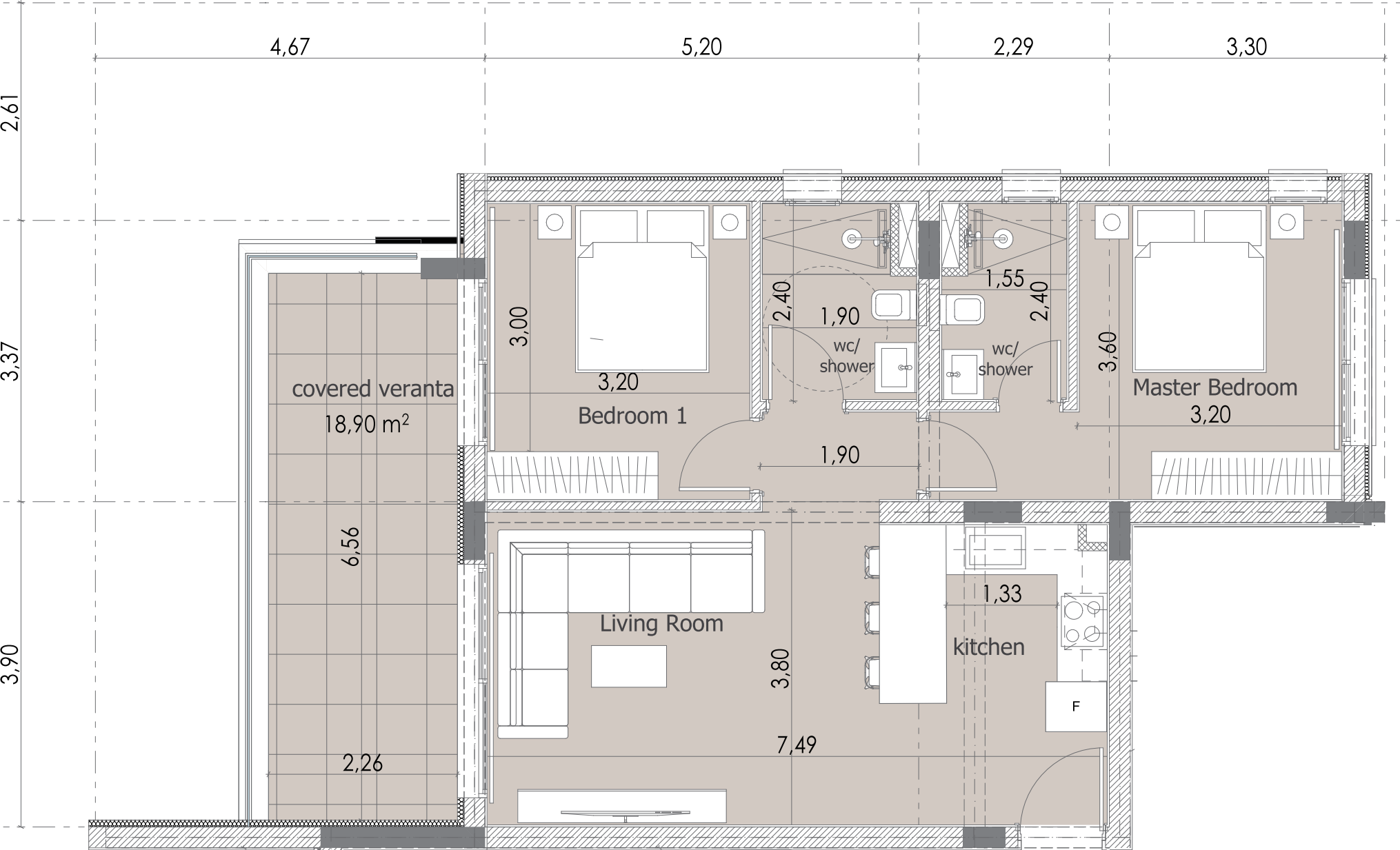
Covered Internal	75m²
Bath rooms	2
Bed rooms	2
Parking Covered	YES
Covered Veranda	18.9m²
Uncovered Veranda	0
Storeroom	4.32m²





# APARTMENT

## 302



Covered Internal	75m <sup>2</sup>
Bath rooms	2
Bed rooms	2
Parking Covered	YES
Covered Veranda	18.9m <sup>2</sup>
Uncovered Veranda	0
Storeroom	4.38m <sup>2</sup>





	AP 101	AP 102	AP 201	AP 202	AP 301	AP 301
Covered internal	75m <sup>2</sup>	75m <sup>2</sup>	75mm <sup>2</sup>	75m <sup>2</sup>	75m <sup>2</sup>	75m <sup>2</sup>
Bathroom	2	2	2	2	2	2
Bedroom	2	2	2	2	2	2
Parking covered	YES	YES	YES	YES	YES	YES
Covered veranda	20.25m <sup>2</sup>	17.75m <sup>2</sup>	18.90m <sup>2</sup>	18.9 m <sup>2</sup>	18.9m <sup>2</sup>	18.9m <sup>2</sup>
Uncovered veranda	0	9.70m <sup>2</sup>	0	0	0	0
Storeroom	2.8m <sup>2</sup>	2.8 m <sup>2</sup>	2.8m <sup>2</sup>	2.8m <sup>2</sup>	4.32m <sup>2</sup>	4.38m <sup>2</sup>



KALEIDE Property Group is a renowned real estate developer in Cyprus, boasting an impressive portfolio of landmark projects and developments.

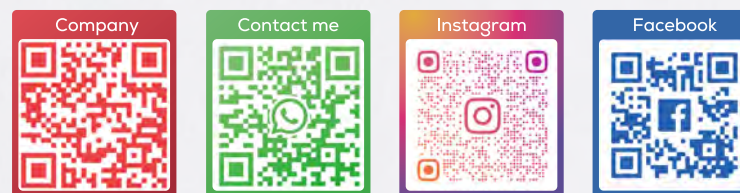
We offer smart and cost-effective solutions for homebuyers seeking immigration opportunities or long-term investments, while also curating premium selections to fulfill your aspirations for luxury real estate.

Guided by our commitment to openness and integrity, we embrace an inclusive and diverse brand strategy, dedicated to developing eco-friendly, energy-efficient, and architecturally stunning real estate projects.

With extensive industry expertise, our team stands as local experts with a global perspective, specializing in Cyprus' real estate market. Our diverse portfolio ensures a comprehensive selection of properties tailored to both living and investment needs.







**+357 25 100 688**

📍 Leoforos Amathountos 2, Kaleide Group, Sun City Beach  
Complex. Shop 1-2, 4531, Mouttagiaka, Limassol, Cyprus

✉ info@kaleidegroup.com

🌐 www.kaleidegroup.com